

SATURDAY, SEPTEMBER 24, 2022
RUNNING SPRINGS CATTLE CO. | NOLENSVILLE, TENNESSEE



Seedstock CONNECTION[♂]_♀ Sale

SIMMENTAL | ANGUS | SIMANGUS

FEATURING THE MATURE COW HERD DISPERSAL OF
PREMIER ANGUS GENETICS FROM WATER'S EDGE FARM

WELCOME TO THE

Seedstock CONNECTION

SIMMENTAL | ANGUS | SIMANGUS

Sale

FEATURING THE MATURE COW HERD DISPERSAL OF
PREMIER ANGUS GENETICS FROM WATER'S EDGE FARM



CATTLE COMPANY

Matt & Terri Van Slyke, 615-417-6035
7509 Nolensville Rd | Nolensville, TN



SINCE 1971

NEIL J MARTIN & CHRIS MARTIN
9387 S LICK CREEK RD | LYLES, TN
Neil 931-580-6821 CELL / 670-3646 HOME
Chris 931-580-6821 CELL
martinfarmsbeef@gmail.com
MartinFarmsBeef.com



Five minutes from Historic Leiper's Fork
3340 Southall Road | Franklin, Tennessee

Drs. Sam & Leslie Lynch, Owners
615-218-1624 or 615-614-3424

Matthew Hughes, FARM MANAGER
615-406-3570

Christopher Martin, GENETICS
931-580-6821

with special guests



TAYLOR FARMS
MIDWAY, TENNESSEE
PATRICK TAYLOR, DVM
423-552-4424
drptaylor1@gmail.com



This sale will be broadcast live on the internet.

DVAuction
Broadcasting Real-Time Auctions
Real time bidding & proxy bidding available.

ALLIED
GENETIC RESOURCES



TENNESSEE *Seedstock* **CONNECTION** ♂
♀

YOUR CONNECTION FOR PUREBRED & HYBRID SEEDSTOCK GENETICS

TENNESSEE Seedstock CONNECTION

Welcome to the 2022 Seedstock Connection Sale! What a great way to kick off our fall sale season with the Tennessee Seedstock Connection Sale. Our involvement with the programs involved began four years ago, and the quality and success of this sale has grown year in and year out. The common goal of providing genetics that will move the beef business forward is the commonality among this group that makes it special. If you have not had a chance to make it to this event in the past, this year will no doubt be worth the trip!

The cattle market is looking extremely promising. Suppressed cow inventory and continued high demand for US beef is leading to a rise in prices. I think we can all agree it's a welcomed change versus the challenges the industry has faced in recent memory. Promising times in the beef business have finally reached the cow-calf sector once again.

This year's Seedstock Connection Sale features a cross section of high-caliber females from some of the Southeast's most progressive breeding programs. Past customers can attest, cattle sold in this very sale will flat work in not only the Southern region, but all across the country. The 2022 female offering represents a blend of exciting new genetics along with proven producers out of the heart of these genetic providers' herds. Not only is this the largest female offering from this group to date, it's a good set of production-oriented females!

We hope you can make plans to join us for The Seedstock Connection Sale hosted by Running Springs Cattle Company. If we can be any assistance, please do not hesitate in giving us a call.

Sincerely,

Marty Ropp & Corey Wilkins

YOUR CONNECTION FOR PUREBRED & HYBRID SEEDSTOCK GENETICS

Corey Wilkins, 256-590-2487 Allied Genetic Resources
Marty Ropp, 406-581-7835 Allied Genetic Resources
Christopher Martin, 931-580-6821 Martin Farms / TN Seedstock Connection
Neil Martin, 931-623-2634 Martin Farms / TN Seedstock Connection
Matt Van Slyke, 615-417-6035 Running Springs Cattle Co. / TN Seedstock Connection
Sam Lynch, 615-614-3424 Water's Edge Farm / TN Seedstock Connection



Schedule of Events

Friday, September 23

**Kenneth Ambrose Memorial Heifer Scholarship
Finalist Interviews, 2 p.m.**

Cattle on display, 4-6 p.m.

**Presentation of Kenneth Ambrose Memorial Heifer Scholarships
followed by a picnic social courtesy of
Tennessee Seedstock Connection Partners, 6 p.m.**

Saturday, September 24

Buy Now bids accepted, 9-11 a.m.

Cattle on display, 10 a.m.

Lunch courtesy of The Seedstock Connection Sale, 11:30 a.m.

Welcome & Introductions

The Seedstock Connection Sale, 1 p.m.

WHAT DOES THIS LOGO MEAN?

RightMate
powered by TOP GENOMICS

We're excited about Dr. Mahdi Saatchi's work with high impact genes and the development of RightChoice and RightMate to advance genetic progress and aid in genetic selection. This logo means a bred female is carrying the service of a sire selected by the RightMate program as a genetically complimentary match to the dam and the resulting progeny is likely to advance genetic progress. Matings that lack a logo don't necessarily mean they are NOT a RightMate, but in most cases probably that a mating was not subjected to the RightMate program.



The heifer scholarship logo means a heifer is eligible to be chosen by one of our Kenneth Ambrose Memorial Heifer Scholarship winners. Three heifers that are cataloged and identified with this logo will be chosen by an exceptional young cattleman or cattlegirl on Friday evening after the conclusion of our Heifer Scholarship finalist interviews, and those animals will not be in the sale Saturday.

We will have both bulls and bred heifers that qualify for Genetics cost share through the 2022-23 Tennessee Ag Enhancement Program. We will make every effort to work with TAEP personnel to identify those animals before sale day. TAEP guidelines state you may not turn in receipts for purchases made prior to October 1; however, you may bid on the right to purchase qualifying animals after that date. We will be happy to work with you within the context of any program rules and regulations, so if you plan to apply for Genetics cost share this year and you are the successful bidder on any qualifying bull or bred heifer in this sale, please DO NOT collect paperwork or make settlement following the sale without notifying someone associated with the sale so we can make sure all your paperwork is in order. For more information about the TAEP program and how to qualify for TAEP cost share, please visit tn.gov/agriculture.

TENNESSEE Seedstock CONNECTION

YOUR CONNECTION FOR PUREBRED & HYBRID SEEDSTOCK GENETICS

TENNESSEE SEEDSTOCK CONNECTION ALLIANCE PARTNERS



Neil Martin & Chris Martin Martin Farms

Lyles, Tennessee

Neil Martin is among the pioneers of the Simmental breed. He and his dad began using imported genetics to increase calf performance in 1971.

"My dad and I made a decision to stay with Simmental after that first calf crop," says Neil. "We saw dramatic results with Simmental compared to the other breeds we tried."

Today's breeding program is a joint effort between Neil and son Chris who became interested in the cattle at a young age. The team works hand in hand and collaborates on every major decision involving the program's genetics, herd health, and overall management. Martin Farms maintains the lowest continuously active ASA membership number (005390) in the state of Tennessee.

"We try to use all the tools and information available, and a lot of time and thought goes into every mating," says Chris, who admits he might obsess over planned mating decisions.

"Animal breeding is an art form," he continues. "My life goal is not to make a perfect one, but to make every generation better than the one before it."

Martin Farms hosted its first production sale in 2006. "Open House at the Farm" has evolved into what is dubbed the Seedstock Connection Sale, but Chris and Neil remain committed to their sale concept with an emphasis on transparency and customer interaction.



Matt & Terri Van Slyke Running Springs Cattle Co.

Nolensville, Tennessee

Matt and Terri own and operate Running Springs Quarter Horses & Cattle Co. in Nolensville where both were raised. They met at a local saddle club where they both ran barrel horses, and they settled at the current farm in 1997. Terri oversees a boarding and training facility there on the farm while Matt focuses on the cattle operation and his off-farm business.

Matt has owned commercial cattle since 1990. A local veterinarian recommended he visit nearby Water's Edge Farm in 2015 where Matt purchased five registered bred heifers. Utilizing AI on both the registered and commercial cows, he then leased a walking herd sire from Martin Farms for clean-up behind the AI program.

Matt began phasing out the commercial cattle in 2015. As he explains, "I can't have the most cattle compared to the next guy, but I'd like to have the best ones I can raise eventually."

Matt is focused on that goal and is on a fast track to building one of the elite Simmental and SimAngus breeding programs in the Southeastern United States. He and his family and crew are proud to host this year's Seedstock Connection Sale



Drs. Sam & Leslie Lynch family Water's Edge Farm

Franklin, Tennessee

Sam grew up on a small family farm in rural southern Illinois. From a young age, he learned the values of God, family, hard work, and the American Dream.

Sam remembers fondly, "The day we took our commercial cattle to the sale was especially exciting for our family because it paid for our gas money all year, and if there was any left over, maybe a new outfit for the first day of school."

Since 2010, Sam has worked closely with Chris Martin of Martin Farms to build the WEF brand. Utilizing elite Angus genetics and the complementarity of Simmental, the goal has been to create both purebred Angus and SimAngus cattle that meet commercial demands.

In 2014, Sam intensified his focus on superior Angus genetics relevant to the nation's commercial cow herd and to the demands of the beef supply chain. A significant investment has been made in the Angus genetics that make up the heart of this program.

It is with mixed emotions the decision was made to disperse the mature cow herd of Water's Edge Farm. There are females in this sale with the genetic potency to propel any breeding program to the next level. If you're serious about the seedstock business, don't overlook this incredible opportunity to secure elite Angus genetics like these. You don't come across an opportunity like this every day.

TENNESSEE *Seedstock* CONNECTION♂♀

YOUR CONNECTION FOR PUREBRED & HYBRID SEEDSTOCK GENETICS

SEEDSTOCK CONNECTION SALE GUEST CONSIGNORS



Camden (left) & Hadley Williams
Williams Brothers Simmental
Milan, Missouri

Hadley and Camden both came through our Heifer Scholarship program, and not that we were way impressed, but have you met these guys? Giving their parents some credit: their dad, Doug, is a banker, and we think he's had them handling their own business deals since they could ride their tricycles down the sidewalk to a big cardboard box with B-A-N-K written in red magic marker!

After they both won scholarships, and while still in high school, they became faithful customers of the sale. So it only seemed natural to invite them to consign when they started talking about marketing cattle. Not only do they support the sale every year with consignments to the sale, Hadley and Cam have generously supported the Kenneth Ambrose Memorial Heifer Scholarship every year they have brought cattle. Talk about paying it forward! These two should be paid up for a long while.

Be sure to meet them in person at the sale. You'll be just as impressed with these young men as we have been. And don't miss their special feature lot this year in a pair of ET sisters by the legendary HC Power Drive. We appreciate their commitment to bring their best genetics and we welcome them back this year.



Becky & Barry Toy
Toy Hill Farm

Bon Aqua, Tennessee

As a first time consignor in last year's Seedstock Connection Sale, Becky and Barry Toy of Toy Hill Farm brought an outstanding female that became one of the sale features and was among the high-selling lots in 2021. We certainly welcome them back as consignors again this year, and we know you'll appreciate another quality set of breds they'll have available on sale day.

Becky and Barry are good friends and always willing to help out, no matter how dirty the job. They have been eager to learn all they can about the genetic business, and they've made some pretty nice cattle which makes this whole thing look a lot easier than it is! We especially appreciate their willingness to share the best they have raised because we all know that isn't always easy to do!

Becky and Barry have a small herd, and they are particular about the genetics they bring in and the matings they make. You'll have the opportunity to evaluate ten bred females that were hand-picked by Corey and Chris, and know there wasn't one we asked for they weren't willing to share. These are practical, no-nonsense females that can get the job done. Coincidentally, that sounds a lot like the way most people might describe Becky!

Be sure and meet these folks. They're good people, and we appreciate their friendship and them being a part of this year's sale.



Patrick Taylor, DVM with his family
Taylor Farms

Midway, Tennessee

Taylor Farms is home to MF Pink, the cow Chris claims is the best female that's ever walked the pastures of Martin Farms and the best cow he's made (SO FAR!). If it wasn't in God's plan for Pink to grow old at her birth place, then she found a home where somebody is just as proud of her as we ever were.

As a vet with a vested interest who does his own flushing, Patrick has increased Pink's total of reported ET progeny to 64 (not counting seven natural calves), and at 13 years of age, she hasn't retired yet! Patrick has done a fantastic job with her, and I've watched his entire program improve so fast you can SEE it happening. That's exciting stuff!

We've enjoyed working with Patrick, and we look forward to a long-lasting relationship in the cattle business. We couldn't talk him out of another Pink daughter this year, but Patrick will have a dozen good, bred females that represent his emerging breeding program well, and we don't think you could find a better dude to have on your genetic team.

We sure appreciate Patrick making the long trip to participate in the sale again this year, and we hope you'll take advantage of the opportunity to meet and talk to him September 24th.

General Sale Information

Location

With the formation of Tennessee Seedstock Connection, an alliance between Martin Farms, Running Springs Cattle Co., and Water's Edge Farm, in 2020, the decision was made to rotate the location of this sale each year. This year's sale will be held at Running Springs Cattle Co. located right outside downtown Nolensville, Tennessee.

The shortest and easiest path between the farm and any overnight accommodations is approximately 8 miles away in nearby Smyrna. We're not far from metro Nashville, so you may choose from many other available options for hotel or lodging, just know the farm is located about 20 miles south of downtown, so Smyrna, Brentwood, or Cool Springs area will be more convenient than other areas. Nashville International Airport is also approximately 20 miles away. Feel free to contact us if you need help with travel arrangements.

The GPS address is 7509 Nolensville Rd, Nolensville, 37135.

Directions

Running Springs Cattle Co. is located directly south of Nolensville right on Nolensville Road, approximately 30-45 minutes drive time from downtown Nashville or Nashville International Airport. From the north, you can take the Old Hickory Blvd. exit East off I-65 or West from I-24 and then go South on Nolensville Road. After you travel through the small town of Nolensville, the farm will be on your right. From any other direction, we recommend taking the 840 loop to Exit 42, then go North through the stop light at Triune and keep straight up Nolensville Road until you reach the farm on your left.

Terms of Sale

All cattle sell under the suggested terms set forth by the respective breed association and are guaranteed to be breeders as defined in those terms. A written copy of the terms is available by request.

Sale Updates

We have made every attempt to supply the most current and accurate information available on the cattle being offered for sale. Individual performance data and ratios are available by request or by logging in to the ASA or AAA website (simmental.org or angus.org). Any updates or additional information made available before or on sale day will take precedence over previously printed material.

Total Herd Enrollment

All members of The Seedstock Connection Sale are voluntary members of ASA's Total Herd Enrollment. 2022 TR option fees cover the cost of registration and first transfer for any calf born during the fall 2022 calving season (June 1 through December 31).

Pregnancy Status & Sexation

All females selling as safe in calf have been palpated or ultrasounded and determined to be so by a licensed veterinarian. Any guarantees as to pregnancy status are covered in the Terms of Sale. No seller guarantees the sex of any embryo or unborn calf selling as male or female. We have a great deal of confidence in sexing technology; however, there remains an acceptable margin of error (around 5%).

Accommodations

Nearby Smyrna is located right on I-24 East, approximately 20 minutes drive time from downtown Nashville and only 8 miles from the farm. These aren't the only hotels at that exit, but in case one of these suits you:

avid hotel, expo hospitality llc ROOMS FROM \$128
810 Expo Drive, Smyrna, TN 37167
(615) 821-1550

Holiday Inn Express & Suites ROOMS FROM \$129
2565 Highwood Blvd, Smyrna, TN 37167
(615) 893-9992

Sleep Inn & Suites ROOMS FROM \$102
2689 Highwood Blvd, Smyrna, TN 37167
(615) 220-2260

Health & Management

All cattle have received routine vaccinations and any necessary boosters. Cattle are maintained on native grass pastures and offered free choice mineral year round. Some calves have been creep fed for a limited time period; however, all supplementation for development after weaning is done by hand while cattle or calves are on pasture.

Disposition Scores

We consider disposition an economically important trait. We use Doc EPDs during selection and we report disposition scores at weaning.

- 1 - Very Docile, "gentle and easy to handle"
- 2 - Docile, "calm natured but may become restless in the chute"
- 3 - Nervous, "temperment is manageable but may become impatient while in the chute or being sorted"

Cattle with scores of 4, 5 or 6 are culled due to unmanageability.

Transfer of Ownership

All cattle will be transferred to the buyer provided during checkout. In order to save time and confusion at checkout, it would be helpful if every buyer, **including juniors**, has his or her own buyer number.

Genetic Defects

Both breed registries--ASA and AAA--identify cattle as either known or potential carriers of any deleterious genetic conditions. Any possible carriers of known defects in our breeding program have been tested and documented with the proper registry or registries, and any carrier or potential carrier offered for sale shall be identified as such. For more information about known genetic conditions or for answers to questions about genetic testing, visit simmental.org and click on Genetics/EPDs > Genetic Conditions.

Photos of Cattle

We've heard comments that the pictures in the catalog don't do our cattle justice. Cattle are pictured in pasture condition--not fitted for a show--and due to the developmental stage of the calves, most of the cattle will change considerably between the time photos are taken and our sale day. We make an effort to present our cattle favorably and under real conditions, and we are confident they will look the same the day after you get them home as they do at our place.

Sale Day Phone Numbers

Matt Van Slyke, 615-417-6035
 Christopher Martin, 931-580-6821
 Neil Martin, 931-623-2634
 Sam Lynch, 615-614-3424
 Patrick Taylor, 423-552-4424
 Barry Toy, 615-519-2241
 Camden Williams, 660-292-1243
 Hadley Williams, 660-292-0927

Marketing Team

Corey Wilkins, 256-590-2487
 Allied Genetic Resources
 Marty Ropp, 406-581-7835
 Allied Genetic Resources
 Pit Kemmer, 931-335-4628
 Sale consultant
 Corbin Cowles, 270-991-2534
 Sale consultant
 Ben Spitzer, 864-723-3779
 ASA Beef Specialist
 Alex Tolbert, 706-338-8733
 AAA Field Representative
 Chris Ivie, 931-215-0316
 ASA Eastern Region Trustee
 Blake Darnell, 931-762-4839
 President, TN Simmental Assoc.
 Dustin Rodgers, 336-409-5498
 TN Auctioneer License 6214

Trucking & Insurance

Please let us know if you need assistance with trucking or insurance. We are glad to help make the most economical arrangements possible.

EPDs

The EPDs printed in this catalog are the latest available from ASA or AAA as of August 15, 2022. Not every EPD is shown simply due to space constraints. To view the most current and complete EPDs and percentile rankings, log in to the respective breed association's database and search for any animal by registration number.

Internet Bidding

If you are unable to attend the sale, you may register prior to sale day at DVAAuction.com and bid live online in real time during the auction. Videos of the cattle will be posted there, and their professional staff is glad to help if you need any assistance getting registered to bid.

This sale will be broadcast live on the internet.

DVAAuction
 Broadcasting Real-Time Auctions

Real time bidding & proxy bidding available.

1/2 AUCTION, 1/2 PRIVATE TREATY SALE OUR SALE FORMAT OFFERS BUYERS THE BEST OF BOTH WORLDS WITH THE OPTION TO GET IT OVER WITH AND **BUY NOW** SO THIS IS **HOW IT WORKS.**

Every lot in this sale has a "starting bid" as well as a BUY NOW price printed in the back of this catalog. We will accept Buy Now bids the morning of the sale, Saturday, September 24th ONLY from 9:00 until 11:00 a.m. before the auction at 1 p.m. Buy Now bids must be submitted on the Buy Now form available at the clerking table the morning of the sale. The first BUY NOW bid submitted to sale staff in charge of accepting those bids will purchase that animal at the BUY NOW price. We will consider that animal sold, and the animal will not go through the auction. If you have any questions whatsoever, please don't hesitate to contact anyone on the sale team or any of the consignors individually. We're more than happy to visit with you and answer any questions you may have.

IN CASE YOU'RE WONDERING, BASED ON LAST YEAR, WE MIGHT EXPECT TO SELL **8 TO 10 LOTS** TO BUYERS CHOOSING THE BUY NOW OPTION BEFORE THE SALE. BUT IF YOUR BUYING STRATEGY CALLS FOR THE **ENTERTAINING CHATTER OF A FAST-TALKING AUCTIONEER,** WE HAVE A GOOD ONE LINED UP, AND THE **VIDEO AUCTION** WILL START AT 1 O'CLOCK SHARP CDT.

Just like always, cattle will be on display on the premises, grouped in pens, and identified with ear tags. Beginning Friday afternoon, you'll have plenty of time to evaluate the cattle, study the data, and ask us any questions you might have. The auction will be a video sale broadcast by DVAAuction so real time online bidding will be an option for those who cannot be present during the sale.

All bidding will be done by pre-assigned bidder numbers. Please register at the clerking table prior to the sale to obtain a bidding number and confirm all contact information with the sale staff. Phone and absentee bids are welcomed and will be **strictly confidential**. Feel free to contact anyone associated with the sale, and he or she will be glad to help you place your bid.

The sale will begin promptly at 1:00 p.m. Central. A sale order will be available at least one hour prior to the start of the sale, and we will make every effort to make that information accessible to everyone attending the sale as well as those watching online.

Most of the cattle selling are pictured in this catalog, and we'll have videos online to help you assess the offering prior to the sale. In addition, any of the consignors would welcome your visit to their operation any time beforehand if you'd like to evaluate any specific lot or send a representative to do so. Just contact the owner and he'll be glad to accommodate you.



Pick of the Flush

from Running Springs Cattle Co., Nolensville



DAM | WS MISS SUGAR C4

SIRE | TJ TEARDROP

We started getting calls about these calves not many days after we got 'em entered into the ASA database. This mating was all Matt's idea! After he purchased a set of C4 embryos through the Lazy C Diamond sale, Chris Nicholson offered to let him choose a sire from a short list. Matt asked if Chris would consider Teardrop for the mating, and Chris obliged. The result was three bulls and three heifers; all six are homozygous black and polled purebreds, and all six are direct progeny of what's possibly THE most influential cow in the breed today. Sugar C4 is a bull machine, and here's your chance to take one home to your herd! Or you may opt for a daughter of the breed's most popular cow. Either way, don't underestimate the potential value of any one of these

TJ MAIN EVENT 503B

TJ TEARDROP 783F

TJ MS 38W

C4 X Teardrop Pick of the Flush

CLRS GRADE-A 875 A

WS MISS SUGAR C4

WS ANISE A71



RSCC Lollipop J44C

HOMOZYGOUS BLACK & POLLED PUREBRED FEMALE

ASA (3989233)

Calved Nov. 20, 2021

Tattoo: J44C / RE

PQB GE A100K

CE	Brth	Wean	Year	MCE	Milk	MWW	Stay	Doc
13.0	0.2	85.7	129.5	5.5	39.5	82.3	21.6	18.4
25%	25%	25%	25%	55%	1%	1%	5%	1%
CW	YG	Marb	REA	API	TI	GE EPDs	Disp	Score
40.4	-0.28	0.28	0.74	\$157.5	\$89.7	Y		
30%	50%	25%	25%	20%	15%			



RSCC Sugar Daddy K138

HOMOZYGOUS BLACK & POLLED PUREBRED BULL

ASA (4026056)

Calved Jan. 27, 2022

Tattoo: K138 / RE

PQB GE A100K

CE	Brth	Wean	Year	MCE	Milk	MWW	Stay	Doc
15.0	-1.6	86.3	133.9	7.1	39.5	82.6	20.1	12.1
10%	10%	20%	20%	25%	1%	1%	15%	45%
CW	YG	Marb	REA	API	TI	GE EPDs	Disp	Score
37.2	-0.2	0.3	0.66	\$161.7	\$92.7	Y	1	
25%		20%		10%	10%			



TEARDROP



Seedstock
CONNECTION
1A

RSCC Sugar Drop J41C

HOMOZYGOUS BLACK & POLLED PUREBRED FEMALE

ASA #: (3989232)

Calved: Nov. 14, 2021

Tattoo: J41C / RE

PQB GE A100K

CE	Brth	Wean	Year	MCE	Milk	MWW	Stay	Doc
15.3	0.6	94.4	143.7	7.2	39.5	86.6	19.8	13.8
10%	30%	10%	10%	25%	1%	1%	20%	25%
CW	YG	Marb	REA	API	TI	GE EPDs	Disp	Score
43.4	-0.32	0.4	1.02	\$166.9	\$98.1	Y	3	
10%		10%	25%	5%	3%			



Seedstock
CONNECTION
1B

RSCC Gumdrop J45C

HOMOZYGOUS BLACK & POLLED PUREBRED FEMALE

ASA (3989231)

Calved Nov. 19, 2021

Tattoo: J43C / RE

PQB GE A100K

CE	Brth	Wean	Year	MCE	Milk	MWW	Stay	Doc
15.0	-1.4	88.7	135.3	7.1	39.5	83.8	18.7	17.6
10%	10%	15%	15%	25%	1%	1%	30%	2%
CW	YG	Marb	REA	API	TI	GE EPDs	Disp	Score
45.8	-0.25	0.28	0.81	\$158.1	\$93.5	Y	1	
10%		25%		10%	10%			

Seedstock
CONNECTION
1E

RSCC Jolly Rancher J45C

HOMOZYGOUS BLACK & POLLED PUREBRED BULL

ASA (3989230)

Calved Nov. 18, 2021

Tattoo: J42C / RE

PQB GE A100K

CE	Brth	Wean	Year	MCE	Milk	MWW	Stay	Doc
17.5	-3.5	89.7	139.3	8.7	39.5	84.3	19.4	13.1
2%	2%	15%	10%	10%	1%	1%	20%	30%
CW	YG	Marb	REA	API	TI	GE EPDs	Disp	Score
38.9	-0.23	0.19	0.66	\$162.4	\$94.7	Y		
20%		40%		10%	5%			



Seedstock
CONNECTION
1F

RSCC Jawbreaker J45C

HOMOZYGOUS BLACK & POLLED PUREBRED BULL

ASA #: (3989234)

Calved Nov. 22, 2021

Tattoo: J45C / RE

PQB GE A100K

CE	Brth	Wean	Year	MCE	Milk	MWW	Stay	Doc
13.9	-0.1	91.2	138.0	6.1	39.5	85.0	21.3	16.4
45%	40%	15%	10%	10%	30%	15%	40%	15%
CW	YG	Marb	REA	API	TI	GE EPDs	Disp	Score
43.4	-0.26	0.25	0.78	\$159	\$92.6	Y		
10%		25%		10%	10%			





Pick of the Pen

from Running Springs Cattle Co., Nolensville

Playing host to a group sale kinda puts some pressure on to "BRING IT!" So RSCC is "BRINGING IT!"

The Lot 2 females represent the next generation of genetic improvement at Running Springs Cattle Co. We started this venture in the registered seedstock business just a few years ago by Ai'ing a herd of commercial cows and cleaning them up with a purebred Simmental bull. Within just a few years, we were moving out those original commercial cows to make room for improved generations of the females we started with and for females we've found in other programs that would help RSCC move in the direction of progress. We take every decision that has any impact whatsoever on our genetics very seriously. Every planned mating and every transaction, whether it involves us buying or selling cattle, is a decision that can't be taken lightly. The genetics are what this is all about, and our programs can become relevant or they can become irrelevant based a few decisions that play out to be right or wrong.

This group offers someone the opportunity to walk into our Fall 2021 Heifer Calf Crop and choose any female (except one...we're only holding back one!), and we think there are multiple young females in this set of prospects that offer a world of potential! Their sires are some of the most relevant Ai sires in the Simmental breed today, and their dams are the cows that we have bred and selected to build a herd of commercially oriented beef cows that make no excuses for performance or production or profitability. Or for the lack of any of those!

Running Springs Cattle Co. retains the right to one flush on the heifer chosen at the buyer's convenience and the seller's expense. We didn't necessarily plan on selling one of these, but Chris twisted our arm a little. We're proud of the group, and we think the winning bid will come from a cattleman or woman we'd like to know. If you find something in this group you can get excited about, then we think you see 'em a lot the way we see 'em.

This sale will be broadcast live on the internet.

ALLIED
GENETIC RESOURCES

DVAuction
Broadcasting Real-Time Auctions
Real time bidding & proxy bidding available.

SPECIAL SALE FEATURES



Miss RSCC Pebbles J86G

TJ STONE COLD 336G

5/8 SM 3/8 AN FEMALE

MGS: CDI MISSION STATEMENT

Homozygous Black & Polled

ASA (3961227)

Calved Oct. 12, 2021

Tattoo: J86GE / RE

PQB A100K

EXPECTED PROGENY DIFFERENCES by BOLT

CE	Brth	Wean	Year	MCE	Milk	MWW	Stay	Doc
14.6	0.1	93.2	141.0	6.8	26.8	73.4	18.6	15.1
CW	YG	Marb	REA	API	TI	GE EPDs	Disp	Score
33.2	-0.20	0.39	0.76	\$152.3	\$91.4	Y		1

The youngest of all the heifers we cataloged to showcase the pick of these fall-born heifers. Her 2-year-old first-calf dam did a nice job raising her, posting a ww ratio of 120!



Miss RSCC Golddigger J5

TJ GOLD 274G

5/8 SM 3/8 AN FEMALE

MGS: COWBOY CUT

Homozygous Black & Polled

ASA (3961211)

Calved Sept. 2, 2021

Tattoo: J54E / RE

PQB A100K

EXPECTED PROGENY DIFFERENCES by BOLT

CE	Brth	Wean	Year	MCE	Milk	MWW	Stay	Doc
10.8	0.4	77.5	121.5	5.9	25.7	64.4	18.0	13.6
CW	YG	Marb	REA	API	TI	GE EPDs	Disp	Score
34.3	-0.21	0.62	0.68	\$163.0	\$91.2	Y		1

Interesting heifer here with a cool twist to her pedigree... The next maternal sire would be Bold Future, and she's homozygous black and homozygous polled. Balanced EPD profile with a top 2% ranking for Marb places her in the top 10% for \$API and \$TI.



Miss RSCC Keeper J34C

CLRS GUARDIAN 317G

3/4 SM 1/4 AN FEMALE

MGS: MSR GREAT PLAINS

Homozygous Black & Polled

ASA (3961228)

Calved Sept. 1, 2021

Tattoo: J34C / RE

PQB A100K

EXPECTED PROGENY DIFFERENCES by BOLT

CE	Brth	Wean	Year	MCE	Milk	MWW	Stay	Doc
9.2	0.4	94.9	148.7	5.1	25.8	73.2	22.0	9.8
CW	YG	Marb	REA	API	TI	GE EPDs	Disp	Score
43.9	-0.13	0.69	0.74	\$169.2	\$98.6	Y		2

This heifer's productive dam is a member of the beloved Vanilla Bean cow family and was the high-selling lot on our 2016 sale. She's earned a ww ratio of 103 on 5 calves and a yearling ratio of 102 on 4 while maintaining a 359-day calving interval.



Miss RSCC Black Opal J53G

TJ GOLD 274G

PUREBRED FEMALE

MGS: HOOK'S BOUNTY

Homozygous Black; Polled

ASA (3961223)

Calved Sept. 2, 2021

Tattoo: J53GC / RE

PQB A100K

EXPECTED PROGENY DIFFERENCES by BOLT

CE	Brth	Wean	Year	MCE	Milk	MWW	Stay	Doc
11.5	-0.3	80.1	132.2	6.6	30.2	70.2	23.6	10.3
CW	YG	Marb	REA	API	TI	GE EPDs	Disp	Score
28.1	-0.32	0.25	0.71	\$158.9	\$85.9	Y		1

Another balanced-trait female boasting a top 1% rank for Stayability, the trait that pays the bills! Her promising 2-year-old dam did a nice job raising this one, earning a weaning ratio of 102. Don't miss her in the bred cow division due around sale day with another heifer calf!

Miss RSCC Marigold J97F

TJ GOLD 247G

PUREBRED FEMALE

MGS: BEACON

Homozygous Black

Homozygous Polled

ASA (39612229)

Calved Sept. 7, 2021

Tattoo: J97F / RE

PQB A100K



CE	Brth	Wean	Year	MCE	Milk	MWW	Stay	Doc
12.0	2.0	88.5	147.2	6.8	29.9	74.1	15.1	14.0
CW	YG	Marb	REA	API	TI	GE EPDs	Disp	Score
45.2	-0.36	0.49	1.12	\$155.6	\$94.6	Y		3

Miss RSCC Dewdrop J32A

TJ TEARDROP

5/8 SM 3/8 AN FEMALE

MGS: "OLIE" M229

Homozygous Black

Homozygous Polled

ASA (3961214)

Calved Sept. 8, 2021

Tattoo: J32A / RE

PQB A100K



CE	Brth	Wean	Year	MCE	Milk	MWW	Stay	Doc
9.8	2.6	93.7	140.7	4.3	29.6	76.4	22.3	17.6
CW	YG	Marb	REA	API	TI	GE EPDs	Disp	Score
37.5	-0.28	0.24	0.74	\$140.7	\$84.7	Y		3

Miss RSCC Tiara J48D

GW TRIPLE CROWN

5/8 SM 3/8 AN FEMALE

MGS: BEACON

Homozygous Black

Homozygous Polled

ASA (3961233)

Calved Sept. 4, 2021

Tattoo: J48D / RE

PQB A100K



CE	Brth	Wean	Year	MCE	Milk	MWW	Stay	Doc
10.5	0.8	89.8	145.2	7.0	22.3	67.2	18.6	16.4
CW	YG	Marb	REA	API	TI	GE EPDs	Disp	Score
46.2	-0.23	0.61	0.89	\$158.0	\$93.6	Y		1

Miss RSCC Jet Set J86E

MR SR HIGHLIFE

5/8 SM 3/8 AN FEMALE

MGS: COWBOY CUT

Homozygous Black

Homozygous Polled

ASA (3961217)

Calved Sept. 3, 2021

Tattoo: J86E / RE

PQB A100K



CE	Brth	Wean	Year	MCE	Milk	MWW	Stay	Doc
CW	YG	Marb	REA	API	TI	GE EPDs	Disp	Score

Fortune Cookie cow family

WEF FORTUNE COOKIE



Miss WEF Fortune Cookie

from Running Springs Cattle Co., Nolensville

"They won't all do it at the same time, but eventually every Bold Future daughter will look like a Bold Future daughter." That's what Marty told me when he saw A197 and her contemporaries as yearlings at Water's Edge Farm. He was talking about her herd mates, and he was spot on...eventually, they all did. A197 looked like that from Day One.

EXPECTED PROGENY DIFFERENCES by BOLT

CE	Brth	Wean	Year	MCE	Milk	MWW	Stay	Doc	CW	YG	Marb	REA	API	TI	GE EPDs	Disp Score
11.5	1.5	71.9	123.5	6.7	33.8	69.7	13.	9.9	31.6	-0.06	0.36	0.34	\$126.7	\$76.6	Y	1

It can be a somewhat daunting decision to set out to breed a herd of cows "back to the future." If every generation is an improvement over the one before, how does that move us forward? Well, it's not always that simple. Every generation is not automatically "better!"

Before genomics, it took at least ten years to identify the sires that would make a significant impact on the breed through their sons and daughters. And how many "next generation" sires come along over the course of ten years? A BUNCH! Livestock breeding is basically two steps forward, one step back, and repeat. That's if we're lucky!

Breeding "back to the future" means identifying time-tested sires that have proven they can change your program (or the entire breed) for the better. We chose Bold Future as a compliment to the genetic base we had at Water's Edge, and I think the experiment worked.

HOOK'S BLACK HAWK 50B

BOLD FUTURE

HOOK'S CRYSTAL 1C

1/2 SM 1/2 AN SIMANGUS DONOR

BOLD FUTURE

W E F LYNCH MUFFIN 1097

W E F LYNCH MUFFIN 1097

Heterozygous Black & Polled

ASA 2805804

Calved Sept. 3, 2013

Tattoo: A197 / RE

PQS GE C47K (100K PENDING)

Pasture bred & safe to

MF/BMF HILLJACK H13F

Due on or around **11/28/23**

Sex of calf UNKNOWN

In terms of his daughters on a most basic level of what a brood cow should be, Bold Future made a great contribution to the breed. A197 is old school genetics with a modern twist, and she's proven she has what it takes to make a good one by today's standards. (See RSCC GiGi on display sale day). Here's a cool genetic piece to have when you contemplate the question, "Where do I go from here?"

A197 sells in her entirety. She has left a legacy at RSCC, and she will continue to influence this program for years to come. Now we're offering you a chance to let her influence yours. Besides the matriarch of the family, we're offering a heifer pregnancy and choice of four flush sisters, all full sisters to RSCC GiGi, as well as a mature daughter by Hook's Beacon. Every man or woman who appreciates a real beef cow should try to go home with something on that list.



RSCC GiGi G97A
Sired by HOOK'S EAGLE



RSCC NIGHTINGALE J24
Sired by HOOK'S EAGLE



RSCC RAPTOR J27
Sired by HOOK'S EAGLE



Heifer Calf Pregnancy

Fortune Cookie x Hook's Eagle

from Running Springs Cattle Co., Nolensville

HOOK'S BLACK HAWK 50B

HOOK'S EAGLE 6E

HOOK'S CRYSTAL 1C

5/8 SM 3/8 AN HEIFER PREGNANCY

BOLD FUTURE

MISS WEF FORTUNE COOKIE

W E F LYNCH MUFFIN 109

Double Black & Polled

5/8 Blood Heifer Pregnancy

Due Jan. 21, 2023

Registered 3-year-old

SimAngus Recipient

ASA 3535730

PLANNED MATING EPD PROJECTIONS by BOLT

CE	Brth	Wean	Year	MCE	Milk	MWW	Stay	Doc
12.7	-0.4	87.0	141.6	6.1	25.3	67.7	16.5	15.3
45%	40%	15%	10%	10%	30%	15%	40%	15%
CW	YG	Marb	REA	API	TI	GE EPDs	Disp	Score
38.5	-0.24	0.48	0.83	\$152.8	\$90.4	Y	1	
30%	50%	25%	25%	20%	15%			



Mr RSCC Chuckles K535

HOMOZYGOUS BLACK & POLLED BULL CALF

MR RSCC HIGH GROUND G48

3/8 AN SIMANGUS BULL

MF GIGGLES

ASA (4026050)

Calved Feb. 28, 2022

Tattoo: K535 / RE

EXPECTED PROGENY DIFFERENCES by BOLT

CE	Brth	Wean	Year	MCE	Milk	MWW	Stay	Doc
12.2	0.4	90.6	138.9	6.8	24.8	70.1	18.9	17.5
55%	55%	10%	15%	50%	35%	15%	15%	4%
CW	YG	Marb	REA	API	TI	GE EPDs	Disp	Score
26.6	-0.26	0.42	0.79	\$150.1	\$90.0	Y	1	
70%	45%	35%	30%	20%	15%			



Miss RSCC Future F197

from Running Springs Cattle Co., Nolensville

HOOKS SHEAR FORCE 38K

HOOK'S BEACON 56B

HOOK'S ZAFIRAH 41Z

3/4 BLOOD FEMALE

BOLD FUTURE

MISS WEF FORTUNE COOKIE

W E F LYNCH MUFFIN 1097

Homozygous Black;
Heterozygous Polled

ASA 3642917

Calved Aug. 22, 2018

Tattoo: F197 / RE

PQB GE C47K

Pasture bred & safe to

RSCC HIGH GROUND

Due on or around **Oct. 27**

Sex of calf UNKNOWN

F197 is a nice, clean-made daughter of the A197 herd matron in a homozygous black version. She comes with a balanced EPD profile and bred up safe in calf to the HIGH ROAD son, RSCC HIGH GROUND.

EXPECTED PROGENY DIFFERENCES by BOLT

CE	Brth	Wean	Year	MCE	Milk	MWW	Stay	Doc	CW	YG	Marb	REA	API	TI	GE EPDs	Disp	Score
13.9	-0.4	76.1	125.6	8.9	31.3	69.3	17.8	13.2	43.4	-0.3	0.54	1.09	\$154.4	\$86.9	Y	2	
30%	40%	50%	35%	20%	4%	15%	25%	35%	20%	30%	20%	3%	15%	20%			



LOT 4 RECIP | MF GIGGLES PICTURED WITH
LOT 4A | RSCC CHUCKLES K535

There may be just as much to say about this special recip as the heifer calf embryo she's carrying! We purchased this female as a calf from Martin Farms at an Open House sale where she had a lot of friends because of her especially sweet nature.

She's done a tremendous job with this bull calf by HIGH GROUND that sells on her side. This is absolutely one that will be hard to load out and see drive away. Take Giggles home and we don't think you'll ever regret that decision!



Fortune Cookie cow family

We offered the first pick of this fulsh in last year's sale when these calves were less than a month old. With their big sister in production and having already produced a daughter by Triple Crown, we're willing to let another one of these A197 daughter's by Eagle off the farm. If you're curious about their genetic potential, you should see the one brother that wasn't supposed to exist. Man, he's a stud! RSCC Rap-tor is headed to New Day Genetics in Missouri where he'll sell next April. Offering Buyer's Choice of the sisterhood here. The work has been done... Take your pick!



Seedstock
CONNECTION
6A

Miss RSCC Starling J26

Heterozygous Black, Heterozygous Polled

ASA (4026026)

Calved Sept. 5, 2021

Tattoo: J26 / RE

PQB A100K

EXPECTED PROGENY DIFFERENCES by BOLT

CE	Brth	Wean	Year	MCE	Milk	MWW	Stay	Doc
14.6	0.1	93.2	141.0	6.8	26.8	73.4	18.6	15.1
CW	YG	Marb	REA	API	TI	GE EPDs	Disp	Score
33.2	-0.20	0.39	0.76	\$152.3	\$91.4	Y	1	



Seedstock
CONNECTION
6B

Miss RSCC Meadowlark J25

Heterozygous Black, Heterozygous Polled

ASA (4026025)

Calved Sept. 2, 2021

Tattoo: J25 / RE

PQB A100K

EXPECTED PROGENY DIFFERENCES by BOLT

CE	Brth	Wean	Year	MCE	Milk	MWW	Stay	Doc
14.6	0.1	93.2	141.0	6.8	26.8	73.4	18.6	15.1
CW	YG	Marb	REA	API	TI	GE EPDs	Disp	Score
33.2	-0.20	0.39	0.76	\$152.3	\$91.4	Y	1	



Seedstock
CONNECTION
6C

Miss RSCC Myna J23

Homozygous Black & Polled

ASA (4026023)

Calved Aug. 31, 2021

Tattoo: J23 / RE

PQB A100K

EXPECTED PROGENY DIFFERENCES by BOLT

CE	Brth	Wean	Year	MCE	Milk	MWW	Stay	Doc
14.6	0.1	93.2	141.0	6.8	26.8	73.4	18.6	15.1
CW	YG	Marb	REA	API	TI	GE EPDs	Disp	Score
33.2	-0.20	0.39	0.76	\$152.3	\$91.4	Y	1	



Seedstock
CONNECTION
6D

Miss RSCC Puffin J22

Homozygous Polled, Heterozygous Black

ASA (4026022)

Calved Aug. 31, 2021

Tattoo: J22 / RE

PQB A100K

EXPECTED PROGENY DIFFERENCES by BOLT

CE	Brth	Wean	Year	MCE	Milk	MWW	Stay	Doc
10.8	0.4	77.5	121.5	5.9	25.7	64.4	18.0	13.6
CW	YG	Marb	REA	API	TI	GE EPDs	Disp	Score
34.3	-0.21	0.62	0.68	\$163.0	\$91.2	Y	1	

MISS RSCC GiGi

FORTUNE COOKIE COW FAMILY



SIRE | KBHR HONOR

DONOR DAM OF LOTS 7 & 8 | RSCC GiGi



Bull Calf Pregnancy
GiGi X Honor



from Running Springs Cattle Co., Nolensville

HOOK'S BEACON 56B
KBHR HONOR H060
WS MISS SUGAR C4

3/4 BLOOD BULL CALF PREGNANCY

HOOK'S EAGLE 6E
MISS RSCC GiGi G97A
MISS WEF FORTUNE COOKIE

Homozygous Black & Polled
3/4 Blood Bull Calf Pregnancy
Due Jan. 21, 2023

Registered 3-year-old
SimAngus Recipient
ASA 3535709

PLANNED MATING EPD PROJECTIONS by BOLT

CE	Brth	Wean	Year	MCE	Milk	MWW	Stay	Doc
15.9	-1.3	87.8	141.1	8.8	30.3	74.0	19.7	13.8
15%	25%	15%	10%	20%	10%	5%	10%	30%
CW	YG	Marb	REA	API	TI	GE EPDs	Disp	Score
43.6	-0.25	0.61	1.07	\$172.0	\$96.1			
15%	45%	15%	4%	4%	4%			



Bull Calf Pregnancy
GiGi X Honor

from Running Springs Cattle Co., Nolensville

Homozygous Black & Polled
3/4 Blood Bull Calf Pregnancy
Due Jan. 21, 2023
Commercial Recipient



LOT 7 RECIP | GiGi x Honor



Miss RSCC K46G

HOMOZYGOUS BLACK & POLLED 5/8 BLOOD HEIFER
from Running Springs Cattle Co., Nolensville

MR RSCC HIGH GROUND G48

ASA (4026052)

5/8 SM 3/8 AN SIMANGUS FEMALE

Calved Jan. 18, 2022

LVL/KOM MARTINI

Tattoo: K46G / RE

PLANNED MATING EPD PROJECTIONS by BOLT

CE	Brth	Wean	Year	MCE	Milk	MWW	Stay	Doc
12.2	0.4	90.6	138.9	6.8	24.8	70.1	18.9	17.5
55%	55%	10%	15%	50%	35%	15%	15%	4%
CW	YG	Marb	REA	API	TI	GE EPDs	Disp	Score
26.6	-0.26	0.42	0.79	\$150.1	\$90.0	Y	1	
70%	45%	35%	30%	20%	15%			

HONOR was high on the list of RightMate PLUS sires for GiGi. As the \$102,500 high-seller from Keller's 2021 sale, the full brother to HIGH ROAD was one of the most anticipated new sires to emerge last year. We think these two homozygous black and polled bull calf pregnancies offer a lot of promise and opportunity as future herd sires. Exciting pedigree with the maternal influence of GiGi, A197, and Sugar C4 and a stellar, no-holes EPD profile to boot!

Tennessee Seedstock Connection Private Treaty Bulls
are available year round. Contact Chris or any of the alliance partners for more information.

Selling October 15th

IN LEBANON, TN AT THE

TN FALL SHOWCASE SALE

Vanilla Bean cow family



DONOR DAM | MF VANILLA BEAN



DAUGHTER | MF COOKIE



SON | MF/WEF COOL BEANS



SIRE | MCM TOP GRADE

Heifer Calf Pregnancy
Vanilla Bean X Top Grade
from Martin Farms, Lyles, Tennessee

MR NLC UPGRADE U8676

MCM TOP GRADE 018X

MCM 513R

5/8 BLOOD HEIFER PREGNANCY

S S TRAVELER T510 2T22

MF VANILLA BEAN

MF TELLURIDE

Homozygous Black & Polled

5/8 Blood Heifer Pregnancy

Due Jan. 21, 2023

Registered 7-year-old

Angus Recipient, AAA 18556431

ASA Foundation 3032845



RECIP | WEF Elbina 5035

PLANNED MATING EPD PROJECTIONS by BOLT

CE	Brth	Wean	Year	ADG	MCE	Milk	MWW	Stay	Doc	CW	YG	Marb	BF	REA	\$API	\$TI
10.9	0.6	74.3	115.5	0.26	7.2	26.0	63.1	21.6	12.4	29.1	-0.2	0.51	-0.04	0.53	\$153.9	\$81.5
						25%	40%	3%				20%			15%	40%

Dad started marketing registered Simmental cattle in 1978 at the Tennessee Simmental Association's annual fall sale. We try to support that sale still whenever we can, whether it's selling cattle through the sale or bidding on one we like. This year, we wanted to bring a special lot to celebrate 50 years of using Simmental genetics, and what better way to celebrate than with a celebrated female like MF Vanilla Bean?

Now a donor in the respected Hill Top Simmental program, Vanilla Bean is our record high-seller, and she represents a cornerstone cow family in our homozygous black and polled breeding program. This is a special heifer calf pregnancy by the proven cow maker, Top Grade, and in a purebred Angus cow registered with AAA and with ASA as a Foundation female. She wouldn't be a recip in most herds!



Three #1 Embryos TJ Journey X Global from Martin Farms, Lyles

SALE FEATURES

WS PROCLAMATION E202

KBHR GLOBAL J138

TJ MS 38W

3/4 BLOOD FROZEN EMBRYOS

TJ FROSTY 318E

TJ JOURNEY 223J

TJ 2B

Guarantee of 1 pregnancy
if work is done by an IVF-
certified embryologist.



SIRE | KBHR GLOBAL



DAM | TJ JOURNEY 223J

PLANNED MATING EPD PROJECTIONS by BOLT

CE	Brth	Wean	Year	ADG	MCE	Milk	MWW	Stay	Doc	CW	YG	Marb	BF	REA	\$API	\$TI
15.5	-0.2	93.9	144.4	0.32	8.2	31.7	78.6	19.2	15.5	38.4	-0.29	0.45	-0.06	0.79	\$161.3	\$94.4
15%	40%	5%	10%	15%	25%	4%	2%	15%	15%	30%	35%	30%	35%	30%	10%	5%

Journey was our pick from the 2021 Triangle J Harvest Select Female sale last fall. We didn't make the trip to NE for that one, but luckily we knew some folks who did. As is usually the case, our top two picks and Patrick's top two picks were the same two picks! So after an intense game of rock, paper, scissors, we worked out a plan so we wouldn't be stepping on each other and neither of us wind up with either one of the two we wanted to bring back to Tennessee.

As soon as we got her home, we were contemplating planned mating possibilities. Trying to eliminate as much guesswork as we could, we relied on Dr. Mahdi Saatchi's matchmaking skills using RightMate PLUS which identified Global as her #1 top match in the RightMate database. At 14 months, this heifer produced 24 viable embryos and settled Ai (to her #2 Right-Mate match!), and we couldn't be more excited to share these genetics with you. We expect great things from this one!

RightMate powered by TOP GENOMICS

You've narrowed down the list of the sires that will drive your program's direction for the future. The success of your operation is in the balance. Now, you can go to the next level with a RightMate evaluation powered by Top Genomics LLC to prescribe the bulls that genomically compliment each female. Sharpen the list of candidate sires, maximize improvement potential, improve calf crop uniformity and avoid the wasted matings that take dollars from the operation and can lead to early culling of females based simply on a missed opportunity for her to do better.

Whether you are making matings for each cow in the herd or making the expensive decision for a flush of the best donor in the herd, RightChoice is a must for your decision-making tool box. The best sire choice for each cow has always been our focus as breeders but in fact, the bulls you don't choose from your options are even more important.

GIVE US A CALL FOR MORE INFORMATION AND TO MAKE THE POWER OF RIGHTCHOICE WORK FOR YOU.

Bluebell cow family



MF/Circle M Bluebonnet H55D

from Martin Farms & Circle M Simmental

3C SOUTHBOUND W9350

MF Beaumont

CR MISS REY T29

PUREBRED FEMALE

MF Beaumont

MF / Circle M Bluebell

Circle M Diamond

Horned Blue Roan

ASA 3815754

Calved Sept. 6, 2020

Tattoo: H55D / RE

PQD A100K

Ai 1/9 to TJ GOLD (3582577)

Due to calve 10/18/22

Sex of calf according to

ultrasound: **HEIFER**

EXPECTED PROGENY DIFFERENCES by BOLT

CE	Brth	Wean	Year	MCE	Milk	MWW	Stay	Doc
9.1	4.4	68.7	106.0	6.7	23.9	58.2	18.5	6.9
CW	YG	Marb	REA	API	TI	GE EPDs	Disp	Score
28.0	-0.49	0.34	1.01	\$136.7	\$74.8	Y	1	

yet is the top side of her pedigree is rooted in the Burtner "Virginia" cow family, so she may look a little different, but she belongs! And she's carrying a heifer calf due right after Sale Day by TJ Gold! How much fun is that?



Bluebell X Black Hawk

DAM of LOT 10 & LOT 11 EMBRYOS | MF/CIRCLE M BLUEBELL



Three #1 Heifer Embryos

Bluebell X Black Hawk

from Martin Farms, Lyles

HOOK'S

HOOK'S BLACK HAWK 50B

HOOK'S

PUREBRED FROZEN EMBRYOS

MF Beaumont

MF / Circle M Bluebell

Circle M Diamond

3 GRADE 1 IVF EMBRYOS

SEXED HEIFER

Guarantee of 1 pregnancy if work is done by an IVF-certified embryologist.

BLUE ROAN IS THE NEW BALDY, Y'ALL! This blue roan PUREBRED SIMMENTAL is a solid, production-oriented, blue collar beef cow. She's averaged 10 1/2 embryos on two flushes, and we're excited about these HEIFER CALF EMBRYOS sired by Hook's Black Hawk! Bluebell's cow family came into our program in 1980, and those females have been a mainstay in our cow herd for over 40 years. If you like the idea of having something a little different just to keep things interesting, take a hard look at these heifer calf embryos.

PLANNED MATING EPD PROJECTIONS by BOLT

CE	Brth	Wean	Year	MCE	Milk	MWW	Stay	Doc	CW	YG	Marb	REA	API	TI	GE EPDs	Disp Score
13.6	0.7	79.5	123.9	8.2	21.6	61.3	20.8	10.75	40.6	-0.43	0.25	1.23	\$155.8	\$83.8		
20%	35%	45%	35%	15%	65%	55%	10%	60%	15%	45%	25%	4%	15%	30%		

NB Regina cow family

WLE POWER STROKE
 HC POWER DRIVE 88H
 KAPPES LADY IRISH F88
LOT 12A / LOT 12B
 COLEMAN REGIS 904
NB REGINA 71Z
 NB DREAMBOAT ANNE 5U



SIRE | HC POWER DRIVE

DONOR DAM OF LOTS 12A & 12B | NB REGINA

Buyer's Choice

from Williams Brothers Simmental, Milan, MO

WLE POWER STROKE

COLEMAN REGIS 904

Power Drive X NB Regina

KAPPES LADY IRISH F88

NB DREAMBOAT ANNE 5U



Seedstock
 CONNECTION
12A

WBRO Poderoso Princess K228

Homozygous Black, Double Polled
 Calved Feb. 3, 2022

ASA 4070653
 Tattoo: K228/BE
 Open



Seedstock
 CONNECTION
12B

WBRO Princess Royal K243

Homozygous Black, Double Polled
 Calved Feb. 1, 2022

ASA 4070654
 Tattoo: K243/BE
 Open

EXPECTED PROGENY DIFFERENCES by BOLT

CE	Brth	Wean	Year	MCE	Milk	MWW	Stay	Doc	CW	YG	Marb	REA	API	TI	GE EPDs	Disp Score
11.2	0.7	60.5	101.5	5.9	22.0	52.1	17.7	16.1	19.6	-0.23	0.12	0.52	\$119.7	\$63.9	no	n/a

We always try to offer our best each year, and this year is no exception. These two flush mate sisters are straight from the top of our replacement pen. Out of the now deceased NB Regina 71Z and sired by the renown HC Power Drive, these two have the genetic prowess to make a great one. Both of these females are extremely good in their own rights and depending on the day, we go back and forth on which one we like better. We like them both enough we're willing to let you decide which one we keep to go back into our herd.

We are offering Buyer's Choice on these two flush mate own daughters of the iconic Power Drive. With both their sire and dam gone and extremely limited supply of Power Drive semen to be found, this is a special opportunity you don't walk up on every day. Study your lesson here, boys and girls... As Chris would say, he's never met a Power Drive daughter he didn't like! And we have a hard time trying to think of one either! You can be just as confident in the one you take as we'll be in the one you send back home to Missouri with us!

THE WLM. KENNETH AMBROSE MEMORIAL HEIFER SCHOLARSHIP



The William Kenneth Ambrose Memorial Heifer Scholarship was established in 2006 by Neil and Chris Martin of Martin Farms. The program is designed to encourage youth involvement in the beef cattle project, to foster an opportunity for growth and development of youth interested in agriculture, and to give industry youth an opportunity to express creative ideas.

Each scholarship consists of \$1,500 toward the purchase of a weaned, registered Simmental, SimAngus, or Angus heifer calf from one of the three scholarship donors: Martin Farms, Water's Edge Farm, or Williams Brothers Simmental. Recipients may choose a heifer for the value of the voucher or they may elect to use their scholarship with additional monies to purchase an eligible heifer of greater value from the same donor. Finalists not receiving a \$1,500 scholarship are named alternates and receive a credit voucher toward the purchase of any animal marketed through The Seedstock Connection Sale held the day after scholarships are awarded.

Candidates must submit an application along with a project relatable to the Beef industry. Finalists chosen by preliminary application and project scores are invited to participate in a panel interview, then awards are presented based on composite scores in four categories:

- 1) Application, 20 points
- 2) Project for Entry, 30 points
- 3) Finalist Interview, 30 points
- 4) Readiness & Opportunity, 20 points

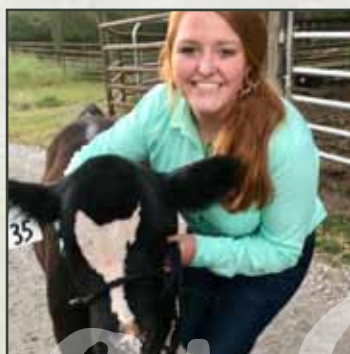
The final category represents judges' consideration of the candidate's prior opportunity to explore any interest in the beef project as well as their perception of the applicant's readiness for opportunity and development at the present time.

In addition to three \$1,500 scholarships and alternate vouchers worth up to \$1,000 each (or more), an additional \$1,500 "Wild Card" scholarship was initiated in 2020 to recognize one young person who exhibits an exceptional level of interest, involvement, and enthusiasm in the livestock industry. Recipients may or may not be chosen from candidates applying for a Kenneth Ambrose Heifer Scholarship, and they are not disqualified from future application, but past scholarship recipients are not eligible for consideration. The award is made possible by an anonymous donor who recognizes the impact of this program and supports it with the same passion we feel about it.

Neil and Chris express their appreciation to that donor in addition to Water's Edge Farm and Williams Brothers Simmental for their generous and continual support of this initiative year after year. We are grateful to Farm Credit Mid America for the continuous commitment and financial support since the program's inception and to our good friend Steve Slate who whole-heartedly supported its early development by providing additional scholarships.

The Wlm. Kenneth Ambrose Memorial Heifer Scholarship has directly impacted more than 72 youth, contributing more than \$82,000 to encourage their involvement and success in the beef industry. We are continuously reminded of Kenneth's infectious attitude, his constant encouragement, and his undying passion for youth livestock programs that proved his commitment to the future of this industry. Thank you, Kenneth, for all you did and all you inspire us to do.

If you or someone you know might be interested in applying for a Kenneth Ambrose Memorial Heifer Scholarship, check out all the rules for eligibility and the requirements to become a candidate--even download an application--when you visit us at MartinFarmsBeef.com and click on the Scholarship tab.





Pickin' Choice

from Martin Farms, Lyles

These three young females represent new genetics we've brought into our program from other respected breeders, proven dams from proven cow families that have a long history at Martin Farms, and the very first proof from a young female born and bred in our program. Put them in a pen together and you can see why we like having our eggs in all three of those baskets! After a great deal of thought and consideration, we're willing to let you take your pick of these three we consider the three best heifer calves from the 2022 Heifer Calf

Crop at Martin Farms. Don't overthink it; we don't think there's a wrong answer here!



MF Kennedy K46E

from Martin Farms, Lyles

TJ MAIN EVENT 503B

TJ TEARDROP 783F

TJ MS 38W

PUREBRED FEMALE

GIBBS 7382E BROAD RANGE

GIBBS 9597G CASSIA B208

WS MISS ALL DAKOTA B208

Homozygous Black & Polled

ASA 4027527

Calved Jan. 2, 2022

Tattoo: K46E / RE

PQB A100K

Open

EXPECTED PROGENY DIFFERENCES by BOLT

CE	Brth	Wean	Year	MCE	Milk	MWW	Stay	Doc
12.1	0.7	94.9	149.2	7.0	30.5	77.8	18.5	13.1
35%	35%	10%	4%	30%	10%	4%	30%	30%
CW	YG	Marb	REA	API	TI	GE EPDs	Disp	Score
42.5	-0.30	0.09	0.96	\$143.5	\$89.2	Y	1	
15%		60%	35%	25%	15%			

GIBBS CASSIA 9597G | \$16,000 DONOR DAM of LOT 13A



MF Karma K81D

from Martin Farms, Lyles

HOOK'S BEACON 56B

CLRS GUARDIAN 317G

CLRS ALWAYS XCELLENT

PUREBRED FEMALE

CCR FRONTIER 0053Z

MF DOMINIQUE

MF UNIQUE

Homozygous Black & Polled

ASA 4027528

Calved Jan. 10, 2022

Tattoo: K81D / RE

PQB A100K

Open

EXPECTED PROGENY DIFFERENCES by BOLT

CE	Brth	Wean	Year	MCE	Milk	MWW	Stay	Doc
15.5	-1.1	91.3	136.4	9.0	25.8	71.4	18.4	15.7
10%	10%	10%	15%	10%	35%	15%	35%	10%
CW	YG	Marb	REA	API	TI	GE EPDs	Disp	Score
45.1	-0.35	0.57	1.01	\$174.8	\$101.0	Y	1	
10%		3%	25%	2%	2%			



MF/BMF Kindness K35H

from Martin Farms, Lyles

HOOK'S EAGLE 6E

TJ GOLD 274G

TJ 12C

3/4 BLOOD FEMALE

CCR COWBOY CUT 5048Z

MF HAPPY

W E F ELBINA 5035

Homozygous Black & Polled

ASA 4024348

Calved Jan. 2, 2022

Tattoo: K35H / RE

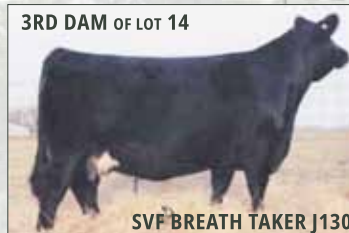
PQB A100K

Open

EXPECTED PROGENY DIFFERENCES by BOLT

CE	Brth	Wean	Year	MCE	Milk	MWW	Stay	Doc
14.8	-1.6	80.3	128.4	8.6	24.8	64.9	21.0	17.4
20%	20%	35%	30%	20%	35%	30%	4%	4%
CW	YG	Marb	REA	API	TI	GE EPDs	Disp	Score
36.2	-0.18	0.57	0.79	\$166.3	\$90.3	Y	1	
35%		15%	30%	10%	15%			





WBRO Miss Breathaker K235

from Williams Brothers Simmental, Milan, MO

W/C LOADED UP 1119Y

W/C BANKROLL 811D

MISS WERNING KP 8543U

PUREBRED FEMALE

HTP SVF IN DEW TIME

HS CATCH YOUR BREATH

SS BABYS BREATH P035

Homozygous Polled,

Double Black

ASA 4086665

Calved Jan. 28, 2022

Tattoo: K235 / BE

Open



EXPECTED PROGENY DIFFERENCES by BOLT

CE	Brth	Wean	Year	MCE	Milk	MWW	Stay	Doc
13.8	0.2	66.9	86.6	6.8	21.7	55.1	13.6	12.4
15%	25%			30%	65%	85%	85%	40%

CW	YG	Marb	REA	API	TI	GE EPDs	Disp	Score
11.7	-0.49	0.05	0.84	\$120.7	\$71.0	no		
	20%	75%	60%					

If you're relatively new to the Simmental scene, here's your chance for a history lesson. Many are familiar with the name Breathaker, but how many of us know the whole story behind that cow family? Well, Breathaker K235 stacks nine generations of Ai sires all the way back to a Parisien daughter born in 1970. More importantly, that pedigree contains the names Babys Breath P035, Breathaker J130, and CEZs Black Mindy just on its way back to the notable and prolific Nichols CEZ 81U cow with 92 progeny recorded in the ASA database!

This one hurts to see go. She is coming straight out of the keeper pen. "Miss Breathaker" is an ET daughter of HS Catch Your Breath, an own daughter of SS Babys Breath P035 we purchased from Bramlet Simmental a few years back. Her last flush at 9 years of age produced 28 freezable embryos, and this Bankroll daughter is just flat cool! She stands square and solid on all four corners with an abundance of rib shape and a massive hip. Oh, and we can't forget she has a beautiful blaze to go with it all. If you watch the show ring, you know how successful these Bankroll daughters have been, and we feel this heifer represents her popular sire well. Take her where you please, and you'll be taking everybody's breath.



WBRO Gabriella K230

from Williams Brothers Simmental, Milan, MO

LONGS THE PLAYER

LONGS CAME TO PLAY

LONG'S MISS PENNY

3/4 BLOOD FEMALE

SIMME VALLEY ZEKE

SSFC ZEKE B57L

CVLS/SSFC HUM-DINGER Z57

Double Black,

Double Polled

ASA 4070655

Calved Mar. 9, 2022

Tattoo: K230 / BE

Open



EXPECTED PROGENY DIFFERENCES by BOLT

CE	Brth	Wean	Year	MCE	Milk	MWW	Stay	Doc
14.4	-0.5	63.9	95.1	7.7	20.6	52.5	16.4	11.0
25%	35%			35%	70%		40%	60%

CW	YG	Marb	REA	API	TI	GE EPDs	Disp	Score
33.3	-0.23	0.21	0.77	\$131.2	\$80.5			
	20%		40%	60%				

Gabriella is out of one of the most consistent cows walking our rolling hills of Northern Missouri. Five of her first seven progeny have been marketed through registered sales across the Midwest, and most recently, Gabriella's full brother commanded \$4750 through Long's Simmental Second Annual Production Sale. This is a quiet heifer with a sweet personality. She would make a great first heifer for any newcomer cattleman or showman.

This sale will be broadcast live on the internet.

DVAuction

Broadcasting Real-Time Auctions

Real time bidding & proxy bidding available.



Seedstock
CONNECTION
17

MF Kitty K609

from Martin Farms, Lyles



HOOK'S EAGLE 6E

TJ GOLD 274G

TJ 12C

PUREBRED FEMALE

ASR LONGEVITY Y184

TJ 609H

TJ 95A

Homozygous Black & Polled

ASA 4027530

Calved Jan. 2, 2022

Tattoo: K609 - RE

Genomic status pending

Open

EXPECTED PROGENY DIFFERENCES by BOLT

CE	Brth	Wean	Year	MCE	Milk	MWW	Stay	Doc
17	-4.3	71.9	113.5	10.0	28.1	64.0	18.8	12.6
3%	1%	75%	55%	3%	20%	40%	30%	35%
CW	YG	Marb	REA	API	TI	GE EPDs	Disp	Score
31.7	-0.23	0.51	0.75	\$173.2	\$92.0	pending	1	
40%		4%		3%	10%			

This daughter of TJ GOLD is out of a 2-year-old first-calf-heifer we purchased on the 2020 Fall Harvest Female Sale from Triangle J. The cow family is well-established in that respected program, and we look forward to 609H's contribution in our program.



Seedstock
CONNECTION
19

MF Kiki K535

from Martin Farms, Lyles



MR SR 71 RIGHT NOW E1538

MR SR MIC DROP G1534

MISS SR C1534

1/2 BLOOD SIMANGUS FEMALE

V A R INDEX 3282

W E F ELBINA 5035

RHODES ELBINA 035

Homozygous Black & Polled

ASA 4027531

Calved Jan. 2, 2022

Tattoo: K535 / RE

Genomic status pending

Open

EXPECTED PROGENY DIFFERENCES by BOLT

CE	Brth	Wean	Year	MCE	Milk	MWW	Stay	Doc
13.6	-0.6	80.6	129.8	8.9	23.8	64.1	18.3	19.3
35%	35%	35%	25%	20%	40%	35%	20%	1%
CW	YG	Marb	REA	API	TI	GE EPDs	Disp	Score
31.8	-0.23	0.33	0.79	\$145.2	\$83.4	pending	2	
50%	55%	50%	30%	25%	30%			

Kiki is another halfblood daughter of the Foundation dam, 5035, which makes her a maternal sister to MF Giggles and MF Happy.



Seedstock
CONNECTION
18

MF/BMF Kimono K19H

from Martin Farms, Lyles



J BAR J NIGHTRIDE 225Z

GW TRIPLE CROWN 018C

GW MISS GPRD 359A

MF/BMF KIMONO K19H

GIBBS 1084Y TUX & TAILS

MF/WEF/BMF BEWITCHED

W E F WITCH 5219

Homozygous Black & Polled

ASA 4024345

Calved Jan. 2, 2022

Tattoo: K19H / RE

Genomic status pending

Open

EXPECTED PROGENY DIFFERENCES by BOLT

CE	Brth	Wean	Year	MCE	Milk	MWW	Stay	Doc
12.4	-0.6	77.5	130	7.4	22.2	60.9	17.7	13.3
50%	35%	45%	25%	40%	55%	55%	25%	35%
CW	YG	Marb	REA	API	TI	GE EPDs	Disp	Score
41.2	-0.24	0.45	0.90	\$148.8	\$84.6	pending	1	
20%	50%	30%	15%	20%	30%			

Kimono is a striking blaze-faced daughter of Triple Crown. Her first-calf mother has a perfect udder with small teats and a pedigree tracing to SAV RESOURCE and SAV NET WORTH back to the WITCH cow family from Partisover Ranch.



Seedstock
CONNECTION
20

Miss WEF Kara K744

from Water's Edge Farm, Franklin



KBHR HIGH ROAD E283

MR SR HIGHLIFE G1609

MISS SR D1609

1/2 BLOOD SIMANGUS FEMALE

S A V MORTON COUNTY 5010

W E F SARAH W153 7Y44

YON SARAH W153

Double Black,

Homozygous Polled

ASA (4026419)

Calved Jan. 1, 2022

Tattoo: K744 / RE

PQS 9K

Open

EXPECTED PROGENY DIFFERENCES by BOLT

CE	Brth	Wean	Year	MCE	Milk	MWW	Stay	Doc
11.6	-0.1	83.7	126.1	6.4	21.5	63.2	16.7	8.8
60%	45%	25%	30%	60%	65%	40%	40%	90%
CW	YG	Marb	REA	API	TI	GE EPDs	Disp	Score
33.3	-0.23	0.21	0.77	\$131.2	\$80.5	Y	3	
45%	55%	70%	35%	50%	45%			

A fancy, good-doing halfblood Highlife daughter back to the revered Yon Sarah cow family. This one will make a bood cow!

**Miss RSCC Raven H61E**

from Running Springs Cattle Co., Nolensville

HOOK'S BLACK HAWK 50B
HOOK'S EAGLE 6E
 HOOK'S CRYSTAL 1C

5/8 SM 3/8 AN FEMALE

HOOK'S BROADWAY 11B
MISS RSCC BLACKCAP E61A
 W E F BLACKCAP A161



Homozygous Black & Polled
 ASA (3797122)
 Calved Sept. 14, 2020
 Tattoo: H61E / RE
 PQB A100K

Ai'd 12/20/21 to
CLRS GUARDIAN
 Safe to Ai & due
October 1, 2022.
 Ultrasound: **HEIFER** calf

EXPECTED PROGENY DIFFERENCES by BOLT

CE	Brth	Wean	Year	MCE	Milk	MWW	Stay	Doc
13.9	-4.8	73.3	114.5	7.5	20.9	57.5	21.4	15.7
30%	2%	60%	55%	40%	70%	70%	3%	15%
CW	YG	Marb	REA	API	TI	GE EPDs	Disp	Score
24.9	-0.2	0.67	0.73	\$173.8	\$91.8	Y		
		10%	40%	3%	10%			

**SERVICE SIRE | CLRS GUARDIAN**

\$85,000 high seller from the 2020 Bred For Balance Bull
 Sale hosted by Hook Farms and Clear Springs Cattle Co.

Leading off a particularly strong set of bred heifers in this year's sale is this balanced daughter of Hook's Eagle, specializing in all the convenience traits we all appreciate because they're the traits that make these cattle relevant in the commercial world. H61E is homozygous black and homozygous polled, has that quiet, easy-going attitude typical of the Eagles, and she's a standout for low birth weight, stayability, and high marbling which is the recipe that catapults her to a top 3% rank among her hybrid mates for \$API. Here's a female that has the value bred in and is ready to walk into your producing herd right after sale day (if not before!). As if that's not enough reason to get any serious cow buyer excited, she's mated up to her #1 RightMate match on our list of 20 proven and promising sires. This young female should have a lotta friends on Sale Day!

**Miss RSCC High Hopes H61A**

from Running Springs Cattle Co., Nolensville

MCM TOP GRADE 018X
HOOK'S BOUNTY 6B
 HOOK'S YUMA 49Y
3/8 SM 5/8 AN FEMALE
 CONNEALLY RIGHT ANSWER 746
W E F BLACKCAP A161
 LONE OAKS BLACKCAP Y161



Homozygous Black & Polled
 ASA 3797117
 Calved Sept. 10, 2020
 Tattoo: H61A / RE
 PQB A100K

Ai 12/20 to **TJ GOLD**
 & confirmed safe to Ai
 Due **Oct. 1, 2022**
 Ultrasound: **BULL** calf

EXPECTED PROGENY DIFFERENCES by BOLT

CE	Brth	Wean	Year	MCE	Milk	MWW	Stay	Doc
13.5	-1.9	75	121.5	8.6	32.5	69.9	20.3	11.1
35%	15%	55%	40%	20%	3%	15%	10%	65%
CW	YG	Marb	REA	API	TI	GE EPDs	Disp	Score
37.8	-0.11	0.42	0.66	\$147.7	\$81.5	Y		
30%		35%	55%	25%	40%			

These first two bred heifers from RSCC represent the same cow family, going back to a tremendously long-bodied, deep-sided Angus female from Water's Edge. The A161 cow was particularly known for extra small calves that grew well and would usually catch up with the bunch by weaning time. Purchased by Phillip Yankee through last year's sale, Lot 22's dam records an average calving interval of 366 days on 7 calves, maintaining performance ratios of 83 on 7 at birth and 102 on 5 at weaning.

This low % 3/8 blood homozygous black baldy heifer brings the genetic influence of her maternal grandam, Hook's Yuma, into the package, and she'll calve right around Sale Day to the 12/20 Ai mating to TJ GOLD, another mating selected through RightMate!



Miss RSCC Hot Cakes H305

from Running Springs Cattle Co., Nolensville

JC MR WARDEN 844A

CDI MISSION STATEMENT

CDI MS 701T 13Z

3/4 SM 1/4 AN FEMALE

GIBBS 1084Y TUX & TAILS

MISS WEF HOT & BOTHERED

MISS WEF HOT CAKES

RightMate
powered by TOP GENOMICS

EXPECTED PROGENY DIFFERENCES by BOLT

CE	Brth	Wean	Year	MCE	Milk	MWW	Stay	Doc
8.1	1.2	65	97.9	3.8	24	56.5	20.7	14
CW	YG	Marb	REA	API	TI	GE EPDs	Disp	Score
12.1	-0.32	0.26	0.73	\$128.2	\$69.0	Y		

This Mission Statement daughter is safe in calf with the result of another RightMate mating. You can put a little more confidence in

Homozygous Black & Polled

ASA 3797119

Calved Sept. 14, 2020

Tattoo: H305 / RE

PQB A100K

Ai to **GW TRIPLE CROWN**

12/20/21 & safe to Ai.

Due to calve **Oct. 1, 2022.**

Ultrasound: **BULL calf**



these matings suggested by RightMate technology. Remember on sale day, they're worth a little more than they would be without it.



Miss RSCC Halo H87E

from Running Springs Cattle Co., Nolensville

TJ MAIN EVENT 503B

TJ TEARDROP 783F

TJ MS 38W

3/4 SM 1/4 AN FEMALE

HOOK'S BOZEMAN 8B

MISS RSCC FUTURAMA E87A

MISS WEF FUTURAMA A87

EXPECTED PROGENY DIFFERENCES by BOLT

CE	Brth	Wean	Year	MCE	Milk	MWW	Stay	Doc
7.1	2.7	83.7	133.9	3.0	29.3	71.1	17.2	11.7
CW	YG	Marb	REA	API	TI	GE EPDs	Disp	Score
34.4	-0.3	0.13	0.83	\$118.8	\$76.0	Y		

Homozygous Black & Polled

ASA 3797112

Calved Sept. 20, 2020

Tattoo: H87E / RE

PQB A100K

Pasture bred to **RSCC HIGH**

GROUND & due to calve

mid October.



A blaze-faced Teardrop daughter from an productive, efficient cow family stacking Teardrop, Hook's Bozeman, and Bold Future!



Miss RSCC Haughty H13B

from Running Springs Cattle Co., Nolensville

JC MR WARDEN 844A

CDI MISSION STATEMENT

CDI MS 701T 13Z

PUREBRED FEMALE

HOOK'S YELLOWSTONE 97Y

MF/THF RHINESTONE

MF UPPITY

EXPECTED PROGENY DIFFERENCES by BOLT

CE	Brth	Wean	Year	MCE	Milk	MWW	Stay	Doc
7.1	1.7	70	109.4	4.7	27.4	62.3	21.7	9.3
CW	YG	Marb	REA	API	TI	GE EPDs	Disp	Score
23.4	-0.4	0.25	0.81	\$140.7	\$76.2	Y		

H13B hails from a good Yellowstone daughter we acquired from Martin Farms through this sale as a bred heifer several years ago. She currently posts a 356-day calving interval on 6 calves with high performing ratios of 5@103 ww and 4@105 yw with one progeny ratioing 116 for IMF! Her service sire, RSCC HIGH GROUND, is a HIGH ROAD son we used quite successfully here. Those calves come easily and grow right alongside the Ai calves.

Homozygous Black & Polled

ASA 3797128

Calved Oct. 10, 2020

Tattoo: H13B / RE

PQB A100K

Pasture bred to and safe to

RSCC HIGH GROUND

Due around **Nov. 30, 2022.**

Sex of calf UNKNOWN



MF/Smith Holiday H8U

from Martin Farms, Lyles

TJ MAIN EVENT 503B

CDI TRAIL BOSS 281E

CDI MS MILESTONE 35W

3/4 SM 1/8 AN 1/8 CS FEMALE

MF HB BEEFER DICE N34

LADY JUNE U8

MISS CITY LIMITS N13

EXPECTED PROGENY DIFFERENCES by BOLT

CE	Brth	Wean	Year	MCE	Milk	MWW	Stay	Doc
6.5	3.3	82.6	129.6	2.9	31.1	72.3	19.1	11.4
CW	YG	Marb	REA	API	TI	GE EPDs	Disp	Score
45.8	-0.46	0.07	0.99	\$127.9	\$78.2	Y		2

H8U is a big, stout, growthy heifer that represents old school genetics and a hard-working, blue-collar, commercial-oriented cow family. All the females from this line pass along extra frame and fast growth, and they have the milk to support what they're raising. Her bull calf by Honor due October 16 will set the bar in any group and will weigh up heavy at weaning.

Homozygous Black,

Double Polled

ASA 3192547

Calved Sept. 13, 2020

Tattoo: H8U / RE

PQD A100K

Ai 1/6 to **KBHR HONOR**

Due to calve **Oct. 16, 2022**

Ultrasound: **BULL calf**



I've always been partial to this heifer. Her mother is a "U" model and just basically my type....moderate, easy fleshing, fertile, and easy to handle. I think H22U will sure make a nice brood cow.



Working on these comments about the bred heifers, I'm reminded how many of the "22s" we've had over the years! Three sale lots on this spread alone represent the same cow family! H22F will have a Stone Cold baby around the first of November, and in case you haven't noticed, we kinda like our Stone Cold calves!



Hopscotch is a bigger framed young female safe in calf to GW Triple Crown. We've been super pleased with Triple Crown in our experience. The calves come easily and grow out well, and he improves disposition like that's his job!



MF/SMITH Heirloom H22U

from Martin Farms, Lyles

TJ MAIN EVENT 503B

CDI TRAIL BOSS 281E

CDI MS MILESTONE 35W

3/4 SM 1/4 AN FEMALE

MF BLACK ALLY

MF LUCY

MF LUCKY ONE M322

Black (HOMOZYGOUS / UNDOCUMENTED)

Heterozygous Polled

ASA 3815736

Calved Aug. 26, 2020

Tattoo: H22U / RE

PQD A100K

Ai 1/26 to **CLRS GUARDIAN**

Due to calve **Nov. 5, 2022**

Sex of calf UNKNOWN

EXPECTED PROGENY DIFFERENCES by BOLT

CE	Brth	Wean	Year	MCE	Milk	MWW	Stay	Doc
12	-0.5	67.8	110.5	6.9	23.6	57.5	15.0	12.7
CW	YG	Marb	REA	API	TI	GE EPDs	Disp	Score
39.7	-0.29	0.15	0.75	\$121.2	\$70.9	Y		1

Bred up safe to Guardian, this bred heifer will be a pair not many days after sale day. Her purebred calf in November will have improved numbers and your investment will appreciate rapidly.



MF/Circle M Honesty H22F

from Martin Farms, Lyles

HOOK'S BEACON 56B

MF PHAROS F08D

MF ABBEY ROAD

PUREBRED FEMALE

MF BEAUMONT

MF FELICIA

MF WHOOPI

Homozygous Black,
Double Polled

ASA 3815747

Calved Nov. 22, 2020

Tattoo: H22F / RE

PQB A100K

Ai 1/26 to **TJ STONE COLD**

Due **Nov. 5, 2022**

Sex of calf UNKNOWN

EXPECTED PROGENY DIFFERENCES by BOLT

CE	Brth	Wean	Year	MCE	Milk	MWW	Stay	Doc
14.4	-0.4	75.9	116.6	9.1	27.0	64.9	16.6	10.3
CW	YG	Marb	REA	API	TI	GE EPDs	Disp	Score
36.1	-0.25	0.36	0.91	\$151.0	\$85.3	Y		1



MF/Smith Hopscotch 414H

from Martin Farms, Lyles

TJ MAIN EVENT 503B

CDI TRAIL BOSS 281E

CDI MS MILESTONE 35W

3/4 SM 1/8 AN 1/8 CS FEMALE

3C SOUTHBOUND W9350

MF FIRE FLY

LADY JUNE R14

Heterozygous Black,
Double Polled

ASA 3815755

Calved Sept. 18, 2020

Tattoo: 414H / RE

PQD A100K

Ai 1/26 to **GW TRIPLE**

CROWN; Due 11/5/22

Sex of calf UNKNOWN

EXPECTED PROGENY DIFFERENCES by BOLT

CE	Brth	Wean	Year	MCE	Milk	MWW	Stay	Doc
9.2	-0.4	70.6	107.6	5.1	19.9	55.2	20.5	10.7
CW	YG	Marb	REA	API	TI	GE EPDs	Disp	Score
15.9	-0.44	0.25	0.78	\$144.9	\$78.8	Y		2



MF/BMF Honeybee H11D

from Martin Farms, Lyles

HOOK'S BLACK HAWK 50B

HOOK'S EAGLE 6E

HOOK'S CRYSTAL 1C

5/8 SM 3/8 AN FEMALE

V A R RESERVE 1111

MISS WEF CALIMOCHO

LMS MISS DEBBIE

Homozygous Black & Polled

Calved Oct. 7, 2020

Tattoo: H11D / RE

ASA 3801332

PQB GE A100K

Ai 1/6 to **CLRS GUARDIAN**

Due to calve **Oct. 16, 2022**

Ultrasound: **BULL** calf

EXPECTED PROGENY DIFFERENCES by BOLT

CE	Brth	Wean	Year	MCE	Milk	MWW	Stay	Doc
11.6	-1.2	79.4	131.7	3.9	19.6	59.3	17.4	16.3
CW	YG	Marb	REA	API	TI	GE EPDs	Disp	Score
40.2	-0.42	0.54	1.29	\$154.5	\$89.1	Y		1

Honeybee has been one of our favorites of this fall bunch since she hit the ground. She's typical of the Eagle females with a little more depth and middle and more width and 3D shape.



Eight of her EPD predictions place her inside the top 25% or better, with a top 1% rank for REA. This girl could make a herd bull or two! Her beautiful dam also sells as Lot 79!



SVFM Frosty Down

from Circle M Simmental, Martin Farms Co-op

ACW IRONHIDE 395Y

TJ FROSTY 318E

TJ 58B

SIMANGUS FEMALE

W/C LOCK DOWN 206Z

SVFM LOCK DOWN 49F

SVFM CC'S DREAMIN

Homozygous Black & Polled

Calved Sept. 1, 2020

Tattoo: 49FH / RE

ASA 3773633

PQB C100K

Ai 1/7 to **KBHR CIMARRON**

Due to calve **Oct. 17, 2022**

Ultrasound: **BULL** calf

EXPECTED PROGENY DIFFERENCES by BOLT

CE	Brth	Wean	Year	MCE	Milk	MWW	Stay	Doc
12.0	-0.2	91.4	139.5	4.5	24.9	70.5	16.1	17.5
CW	YG	Marb	REA	API	TI	GE EPDs	Disp	Score
52.9	-0.05	0.37	0.66	\$141.9	\$89.0	Y		1

49FH was a young calf on her dam's side when we purchased her from Stanley Scott through the TN Fall Showcase Sale for our cooperator in Lewisburg, Kevin thought real hard about



keeping this one, but decided to let her sell to help finish getting his kids through college. Really nice patterned black baldy with big goggle eyes and a perfect udder developing underneath. Here's another good bred heifer that will become a pair not long after you can get her home.



MF/Smith Hummingbird H422

from Martin Farms, Lyles

TJ MAIN EVENT 503B

CDI TRAIL BOSS 281E

CDI MS MILESTONE 35W

PUREBRED FEMALE

3C SOUTHBOUND W9350

MF JUNE BUG

MF LUCY

Homozygous Black & Polled

ASA 3815727

Calved Sept. 11, 2020

Tattoo: H422 / RE

PQD A100K

Ai 1/6 to **TJ GOLD**

Due to calve **Oct. 16, 2022**

Ultrasound: **HEIFER** calf

EXPECTED PROGENY DIFFERENCES by BOLT

CE	Brth	Wean	Year	MCE	Milk	MWW	Stay	Doc
7.7	2.6	69.4	110.9	3.9	24.3	58.9	17.6	11.9
CW	YG	Marb	REA	API	TI	GE EPDs	Disp	Score
37.2	-0.51	0.26	1.07	\$133.2	\$75.6	Y		3

Hummingbird is out of our best 3C Southbound daughter, June Bug 422. Her dam is a picture-perfect brood cow and an example of what performance and maternal look like in one package.



Lot 32 sells carrying a heifer calf by TJ Gold. We REALLY LIKE the Gold heifers! He'll add depth to every female he makes, and you'll get more pounds and more quality than you expect.



If you made it to the sale last year or saw the catalog, you may have noticed Barry and I at Toy Hill Farm like to use Raindancer to make SimAngus females like this one or like THF Gypsy Rain, one of last year's sale features that sold to Water's Edge Farm for \$5,000. We promised Chris and Neil that we would bring our best, and one of our best happens to be another Raindancer out of our own MF/THF



CE	Brth	Wean	Year	ADG	MCE	Milk	MWW	Stay	Doc	CW	YG	Marb	BF	REA	\$API	\$TI
13.9	0.1	95.4	147.9	0.3	6.8	27.7	75.4	18.0	15.7	43.9	-0.41	0.39	-0.062	1.25	\$163.3	\$98.3
15%	25%		5%	10%	30%	20%	10%	40%	10%	10%		10%		3%	10%	3%

H213F has an EPD profile we strive toward, and numbers like these don't happen by accident! She strikes the balance between acceptable calving ease and birth weight in tandem with breed-leading growth figures, and her predictions for maternal and carcass still set high expectations for best-cow-in-the-pasture performance!



Miss THF Raindancer

from Toy Hill Farm, Bon Aqua

COLEMAN CHARLO 0256

S A V RAINDANCE 6848

S A V BLACKCAP MAY 4136

SIMANGUS FEMALE

MF BRASS TACKS

MF/THF CHICKADEE

MF WHIPPOORWILL



Homozygous Black & Polled

ASA 3877412

Calved Oct. 1, 2020

Tattoo: H8C / LE

PQB GE A100K

Ai 1/31 to HOOK'S BEACON

Due Nov. 10, 2022

Sex of calf UNKNOWN

EXPECTED PROGENY DIFFERENCES by BOLT

CE	Brth	Wean	Year	MCE	Milk	MWW	Stay	Doc
14.8	-0.3	80.3	128.5	7.6	22.1	62.2	14.2	15.5
CW	YG	Marb	REA	API	TI	GE EPDs	Disp	Score
43.2	-0.12	0.24	0.76	\$126.5	\$77.4	Y		1

Chickadee, the grand dam of our other crowd favorite in 2021, THF Gracie purchased by Chuck Woodward of GA for \$4,000. Raindancer has been a standout since weaning, and she's the first of the group to get the attention of visitors. Safe in calf to the reliable Beacon!



Miss THF High Road

from Toy Hill Farm, Bon Aqua

HOOK'S BEACON 56B

KBHR HIGH ROAD E283

WS MISS SUGAR C4

PUREBRED FEMALE

HOOK'S BLACK HAWK 50B

MISS THF FREEBIRD

MF UPPITY

Homozygous Black & Polled

ASA 3877416

Calved Sept. 18, 2020

Tattoo: H213F / LE

Genomic: PQB GE A100K

Ai 1/31 to CLRS HERDBOOK

Due to calve Nov. 10, 2022

I initially told Chris I didn't think I could part with this heifer. He looked up over the top of his glasses, and I remembered our promise to bring our best so here she is! It sure was tempting to keep her and see her calf by Herdbook due in November!

Her sire, High Road, needs no introduction. Her young Black Hawk dam comes from a cow family that's been in this business longer than we have! With a pedigree tracing C-B Preferred Missy, BOZ Y227--full sister to Black Mick, Irish Black Knight, and Red Brother--and of course their prestigious dam, R821, the sky is the limit!

J Bar J Nightride 225Z
GW Triple Crown 018C
GW Miss GPRD 359A
CLRS HERDBOOK 316H
MCM Top Grade 018X
CLRS All Xcellence 316 A
Hook's Xcellence 87X

Homozygous Black

Homozygous Polled

5/8 SM 3/8 AN

Calved February 20, 2020

ASA 3709219

PQB GE 100K



PERFORMANCE					MATERNAL					CARCASS					\$ VALUES	
CE	Brth	Wean	Year	ADG	MCE	Milk	MWW	Stay	Doc	CW	YG	Marb	REA	\$API	\$TI	
EPD 11.4	-1.1	90.3	145.4	0.34	7.5	23.9	69.0	20.8	20.6	41.4	-0.47	0.50	1.09	162.9	95.1	
ACC 0.54	0.62	0.61	0.59	0.59	0.30	0.27	0.36	0.33	0.38	0.53	0.41	0.47	0.50			
RANK 65%	25%	10%	10%	10%	40%	40%	15%	5%	1%	20%	3%	25%	3%	10%	5%	

Semen available through Allied Genetic Resources or ORigen



Miss THF Henrietta

from Toy Hill Farm, Bon Aqua

BASIN PAYWEIGHT 1682

MF FOUNDATION F876

MF YOO HOO

3/4 BLOOD FEMALE

HOOK'S BEACON 56B

MISS THF EMILY

MF/THF CHICKADEE

RightMate
powered by TOP GENOMICS

EXPECTED PROGENY DIFFERENCES by BOLT

CE	Brth	Wean	Year	MCE	Milk	MWW	Stay	Doc
15.1	-1.7	61.8	93.9	10.8	24.0	54.8	20.5	17.1
CW	YG	Marb	REA	API	TI	GE EPDs	Disp	Score
22.7	-0.20	0.43	0.68	\$149.6	\$75.3	Y		1

Henrietta is a maternal sister to THF Gracie that sold to GA last year as Chuck Woodward's \$4,000 pick. She's a sweetheart to be around, and you might be interested to know her dam also sells as Lot 81!

Homozygous Black & Polled

ASA 3877425

Calved Oct. 22, 2020

Tattoo: H8E / LE

Genomic: PQB GE A100K

Ai 1/31 to **CLRS HERDBOOK**

Due to calve **Nov. 10, 2022**

Sex of calf UNKNOWN



Henrietta's sire, MF Foundation, was our 2018 Pick of the Bull Calf Crop from Martin Farms, adding a layer of maternal prowess from his donor dam, MF Yoo Hoo. Her top 20% \$API is derived from an EPD package placing her inside the top 5% for MCE and Doc; top 10% Stay; and top 20% CE and BW. This is one of Corey's favorites!



Miss THF Harriet

from Toy Hill Farm, Bon Aqua

BASIN PAYWEIGHT 1682

MF FOUNDATION F876

MF YOO HOO

3/4 BLOOD FEMALE

HOOK'S BROADWAY 11B

MISS THF CUPPA SUNSHINE

MF/WEF COFFEE BEAN

RightMate
powered by TOP GENOMICS

EXPECTED PROGENY DIFFERENCES by BOLT

CE	Brth	Wean	Year	MCE	Milk	MWW	Stay	Doc
15.8	-1.4	73.0	107.8	10.3	21.2	57.6	22.2	15.7
CW	YG	Marb	REA	API	TI	GE EPDs	Disp	Score
30.4	-0.17	0.44	0.48	\$157.3	\$81.3	Y		1

Harriett's pedigree stacks two of the prominent and proven cow families from the trusted Martin Farms program, MF Vanilla Bean and MF Yoo Hoo. With an EPD profile predicting modest

Homozygous Black & Polled

ASA 3877422

Calved Oct. 22, 2020

Tattoo: H248D / LE

Genomic: PQB GE A100K

Ai 1/31 to **CLRS HERDBOOK**

Due to calve **Nov. 10, 2022**

Sex of calf UNKNOWN



mature cow size, this should be an efficient brood cow that proves less is sometimes more. Less input, more profit! Not to be overlooked are her tabulations placing her in the top 2% for Stay, top 10% MCE, and top 15% Docility, CE, and \$API. What traits do you consider most important to build a better brood cow?



Miss THF Hot Coffee

from Toy Hill Farm, Bon Aqua

BASIN PAYWEIGHT 1682

MF FOUNDATION F876

MF YOO HOO

5/8 SM 3/8 AN FEMALE

MR NLC UPGRADE U8676

MF/WEF COFFEE BEAN

MF VANILLA BEAN

RightMate
powered by TOP GENOMICS

EXPECTED PROGENY DIFFERENCES by BOLT

CE	Brth	Wean	Year	MCE	Milk	MWW	Stay	Doc
7.7	4.6	95.8	150.7	5.3	20.1	68.0	18.1	16.0
CW	YG	Marb	REA	API	TI	GE EPDs	Disp	Score
43.9	-0.33	0.24	0.95	\$129.0	\$83.1	Y		1

Touting top 4% herdbook rankings for weaning and yearling EPD, this granddaughter of MF Vanilla Bean has the potential to produce those high growth, terminal bulls the commercial industry needs.

Homozygous Black & Polled

ASA 3877430

Calved Nov. 9, 2019

Tattoo: H248B / LE

Genomic: PQB GE A100K

Ai to **GW TRIPLE CROWN**

on 1/31 & due **Nov. 10, 2022**

Sex of calf UNKNOWN



With a top 10% Doc EPD and top 20% predictions for MWW and Stay, she covers the bases for maternal, and her carcass EPDs read like old school Simmental with high-ranking CW, YG, BF, and REA numbers any feedlot manager would see as dollar signs. The perfect complement to her on paper happens to be the service sire!



Jade J76E is a member of the Pink clan, and she's been a favorite in this bunch since they were just babies. She's safe in calf to HA Justice, Running Springs' new herd sire and the high-selling bull from the 2022 Bred For Balance sale.



MF Jade J76E

from Martin Farms, Lyles

KBHR HIGH ROAD E283

MR SR HIGHLIFE G1609

MISS SR D1609

3/4 SM 1/4 AN FEMALE

V A R INDEX 3282

MF IVORY

MF PINK

Homozygous Black & Polled

ASA 3855390

Calved Jan. 2, 2021

Tattoo: J76E / RE

PQB A100K

Ai 4/11 to HA JUSTICE & confirmed safe in calf.

Due on or around Jan. 19, 2023

Ultrasound: BULL calf

RightMate
powered by TOP GENOMICS

EXPECTED PROGENY DIFFERENCES by BOLT

CE	Brth	Wean	Year	MCE	Milk	MWW	Stay	Doc
13.4	0.1	88.4	137.1	6.1	24.5	68.6	20.4	6.9
CW	YG	Marb	REA	API	TI	GE EPDs	Disp	Score
27.0	-0.41	0.18	0.79	\$142.8	\$84.1	Y		2

Justice is among the very top purebred bulls in the breed for dollar value with an API over \$200! Jade and Joyride, Lot 39, will have two of the very first calves by Justice to hit the ground.



Joyride combines the pedigrees of a top cow in the Martin Farms program, MF Yoo Hoo, and one of the dominant purebred cows in the country in Sugar C4. She'll have one of the earlier calves by the Bred For Balance sale topper, HA Justice.



MF Joyride J76F

from Martin Farms, Lyles

TJ MAKERS MARK 215Y

LCDR MAKIN' WAVES 711E

WS MISS SUGAR C4

5/8 SM 3/8 AN FEMALE

BASIN PAYWEIGHT 1682

MF FANTASIA

MF YOO HOO

Homozygous Black & Polled

ASA 3855373

Calved Jan. 5, 2021

Tattoo: J76F / RE

PQB A100K

Ai 4/11 to HA JUSTICE & confirmed safe in calf.

Due on or around Jan. 19, 2023

Ultrasound: BULL calf

EXPECTED PROGENY DIFFERENCES by BOLT

CE	Brth	Wean	Year	MCE	Milk	MWW	Stay	Doc
7.2	1.6	80.9	115.0	5.2	25.7	66.1	21.8	11.4
CW	YG	Marb	REA	API	TI	GE EPDs	Disp	Score
29.3	-0.2	0.20	0.41	\$129.1	\$75.4	Y		2



Bridle Bit Eclipse E744
Hook's Galileo 210G
Hook's Evita 18E
HA JUSTICE 30J
Hook's Shear Force 38K
Hook's Dacia 14D
Hook's Ariana 58A

Homozygous Black
Homozygous Polled
Purebred Simmental
Calved February 26, 2021
ASA 3918028
PQB GE 100K



PERFORMANCE					MATERNAL					CARCASS					\$ VALUES	
CE	Brth	Wean	Year	ADG	MCE	Milk	MWW	Stay	Doc	CW	YG	Marb	REA	\$API	\$TI	
EPD 15.9	0.1	85.0	144.1	0.37	10.1	32.4	74.9	29.9	18.9	50.0	-0.23	1.01	1.03	200.6	108.1	
ACC 0.47	0.52	0.49	0.50	0.50	0.26	0.19	0.29	0.33	0.19	0.50	0.39	0.47	0.47			
RANK 5%	25%	25%	10%	2%	2%	4%	10%	15%	1%	4%		1%	20%	1%	1%	



Semen available at \$30/unit through Running Springs Cattle Co. or by contacting Allied Genetic Resources or ORigen

Co-owned with Highland Acres and All Beef
Bred by Hook Farms



MF Hazel Jane J327

from Martin Farms, Lyles

HOOK'S BEACON 56B

CLRS GUARDIAN 317G

CLRS ALWAYS XCELLENT

SIMANGUS FEMALE

BALDRIDGE BEAST MODE B074

W E F HAZEL 9327

W E F HAZEL 5327

Homozygous Black

Homozygous Polled

ASA 3855394

Calved Jan. 1, 2021

Tattoo: J327 / RE

PQB A100K

Ai 4/11 to TJ TEARDROP

& safe to the Ai date.

Due Jan. 19, 2023

Sex of calf UNKNOWN

RightMate
powered by TOP GENOMICS

EXPECTED PROGENY DIFFERENCES by BOLT

CE	Brth	Wean	Year	MCE	Milk	MWW	Stay	Doc
14.5	-2.3	93.6	145.5	7.7	24.3	71.0	18.5	9.0
CW	YG	Marb	REA	API	TI	GE EPDs	Disp	Score
46.1	-0.16	0.59	0.89	\$168.0	\$99.4	Y	2	

Here's a really exciting young female. Hazel Jane is one of the first Guardian daughters born, and she comes from a long and proven line of solid Angus genetics backed by the YON Hazel S327 cow, a favorite in the Water's Edge program for many years.



J327's pedigree intertwines some of the hottest bloodlines to span two breeds in the dam of Beast Mode, Isabel Y69, and Guardian's dam, 317A, who happens to be a flush sister to the sire of Sugar C4. Teardrop's great dam, 38W, is like the cherry on top!



MF/BMF Jubilee J74F

from Martin Farms, Lyles

HOOK'S BEACON 56B

KBHR HIGH ROAD E283

WS MISS SUGAR C4

5/8 SM 3/8 AN FEMALE

S A V RAINDANCE 6848

PHT MS RAINDANCE 74F

PHT DUAL ROOKIE 023A

Homozygous Black & Polled

ASA 3855722

Calved Jan. 17, 2021

Tattoo: J74F / RE

PQB A100K

Ai 4/11 to TJ STONE COLD

& safe to the Ai date.

Due Jan. 19, 2023

Ultrasound: HEIFER calf

RightMate
powered by TOP GENOMICS

EXPECTED PROGENY DIFFERENCES by BOLT

CE	Brth	Wean	Year	MCE	Milk	MWW	Stay	Doc
14.6	1.8	99.6	161.5	6.3	25.4	75.1	15.8	16.3
CW	YG	Marb	REA	API	TI	GE EPDs	Disp	Score
55.7	-0.12	0.46	0.84	\$151.4	\$95.0	Y	2	



Here's a female with some size and stature that profiles really nice and has some look. She follows her mother's type, and if you've checked out her little brother by Stone Cold headlining the Lot 87 Pick of the Bull Calf Crop, you'll see why we're so excited about the heifer calf this one is carrying!... Right?



MF/WTR Jo Jo J37F

from Martin Farms, Lyles

KOCH BIG TIMBER 685D

TJ HEISMAN 388F

TJ 67D

PUREBRED FEMALE

SVS SUNDANCE CWSA

SVS ROSE TATTOO FCAH

SVS ROSES R RED CALH

Heterozygous Black,

Homozygous Polled

ASA 3905933

Calved Mar. 12, 2021

Tattoo: J37F / RE

PQB A100K

Ai 4/11 to TJ GOLD

Due Jan. 19, 2023

Ultrasound: HEIFER calf

RightMate
powered by TOP GENOMICS

EXPECTED PROGENY DIFFERENCES by BOLT

CE	Brth	Wean	Year	MCE	Milk	MWW	Stay	Doc
11.8	-1.4	77.5	116.4	7.3	23.2	61.9	19.1	10.0
CW	YG	Marb	REA	API	TI	GE EPDs	Disp	Score
18.9	-0.19	0.40	0.43	\$156.4	\$87.3	Y	2	



Jo Jo is a moderate, easy keeping, and early maturing heifer whose high quality dam was our pick from the 2020 Shenandoah Valley sale. She'll be a nice pair with a TJ Gold heifer calf at side.



H106 is a pretty young female backed by strong maternal influence. She'll be modest in her mature size and efficient about getting her job done.



MF Heather H106

from Martin Farms, Lyles

HOOK'S BEACON 56B

MF PHAROS F08D

MF ABBEY ROAD

PUREBRED FEMALE

CCR GRAVITY 9064A

KBHR F106

KBHR B120

Homozygous Black & Polled

ASA 3906926

Calved Nov. 3, 2020

Tattoo: H106 / RE

PQB

Pasture bred to **BRIDLE BIT HERD BOOK H068** & due to calve around **mid December**.
Sex of calf UNKNOWN

EXPECTED PROGENY DIFFERENCES by BOLT

CE	Brth	Wean	Year	MCE	Milk	MWW	Stay	Doc
13.4	-2.2	67.4	103.2	9.2	21.6	55.2	20.3	12.9
CW	YG	Marb	REA	API	TI	GE EPDs	Disp	Score
27.4	-0.32	0.29	0.93	\$153.1	\$80.2	Y	2	

H106 ranks in the top 4% for BW, top 5% for MCE, and top 15% for Stay. Those add up to make a pretty nice cow!



H63F is an extremely long-necked female whose pedigree stacks the respected PRS Spring Velvet and MF Pink on the top side and traces to the Triple C Sweetheart cow family on the bottom.



MF/BMF Hauteur H63F

from Martin Farms, Lyles

HSCC/MF BLACK CAMO

MF/KOM VELVET ELVIS

CVLS SPRING VELVET 601D

PUREBRED FEMALE

HOOK'S BEACON 56B

MF FASHION

MF LENEXA

Homozygous Black & Polled

ASA (3854618)

Calved Dec. 10, 2020

Tattoo: H63F / RE

PQB A100K

Pasture bred to **BRIDLE BIT HERD BOOK H068** & due to calve on or around **11/24/22**.
Sex of calf UNKNOWN

EXPECTED PROGENY DIFFERENCES by BOLT

CE	Brth	Wean	Year	MCE	Milk	MWW	Stay	Doc
9.7	2.2	92	146.5	6.1	24.8	70.7	17.8	14.3
CW	YG	Marb	REA	API	TI	GE EPDs	Disp	Score
34.2	-0.48	0.18	1.24	\$131.2	\$83.7	Y	2	

Safe in calf to our Colorado Bridle Bit son, Bridle Bit Herd Book, which should blend perfectly with her top 10% rank for weaning and yearling EPD, top 3% REA, and top 5% ADG. Bull mama!



H53D is a fancy made, smaller framed bred heifer that appears to be developing nicely. Females like her turn into low input cows that convert grass efficiently and don't require a lot of extra main-



MF/SMITH Hachoo H53D

from Martin Farms, Lyles

TJ MAIN EVENT 503B

CDI TRAIL BOSS 281E

CDI MS MILESTONE 35W

5/8 SM 3/8 AN FEMALE

MSR GREAT PLAINS 3793A

MF DIAMOND

MF PEARL

Homozygous Black,
Double Polled

ASA 3815722

Calved Sept. 5, 2020

Tattoo: H53D / RE

Pasture bred to **BRIDLE BIT HERD BOOK H068** & due to calve around **mid December**.
Sex of calf UNKNOWN

EXPECTED PROGENY DIFFERENCES by BOLT

CE	Brth	Wean	Year	MCE	Milk	MWW	Stay	Doc
10.9	-0.7	56.3	86.4	5.7	22.7	50.8	18.5	15.0
CW	YG	Marb	REA	API	TI	GE EPDs	Disp	Score
11.6	-0.4	0.17	0.82	\$122.9	\$64.6	Y	2	

tenance. The cow family here is deeply rooted in our program, and Hachoo's maternal numbers reflect that with a top 15% rank for Doc EPD and top 20% Stay.



MF/BMF Jules J15

from Martin Farms, Lyles

KBHR WENTZ E190

KBHR HOMEWARD BOUND G083

WS MISS SUGAR C4

PUREBRED FEMALE

LLSF UPRISING Z925

CVLS SPRING VELVET 601D

PRS SPRING VELVET X126

Homozygous Black & Polled

ASA 3855713 ET

Calved Jan. 10, 2021

Tattoo: J15 / RE

Pasture bred to **BRIDLE BIT HERD BOOK H068**

Due to calve **Feb. 6, 2023**

Ultrasound: **HEIFER** calf

EXPECTED PROGENY DIFFERENCES by BOLT

CE	Brth	Wean	Year	MCE	Milk	MWW	Stay	Doc
13.7	1.5	88.4	138.9	7.8	24.6	68.7	12.0	10.1
CW	YG	Marb	REA	API	TI	GE EPDs	Disp	Score
35.2	-0.42	0.13	0.92	\$131.6	\$85.7	Y	2	

A royal pedigree in this baldy female representing the PRS Spring Velvet clan and claiming Miss Sugar C4 as a grand dam as well. Jules' dam, 601D, sold in our 2020 sale to Circle T Simmental. J15 should make a nice cow, and she has that baldy/blaze face we all like. Her heifer calf by Bridle Bit Herd Book will be nice.



MF/BMF Jasmine J13F

from Martin Farms, Lyles

HOOK'S BEACON 56B

KBHR HIGH ROAD E283

WS MISS SUGAR C4

PUREBRED FEMALE

HOOK'S BOUNTY 6B

MF FLOWER

MF ZOEY

Homozygous Black & Polled

ASA 3855712

Calved Jan. 13, 2021

Tattoo: J13F / RE

PQB A100K

Pasture bred to **BRIDLE BIT HERD BOOK H068**

Due on or around **2/26/23**

Sex of calf UNKNOWN



EXPECTED PROGENY DIFFERENCES by BOLT

CE	Brth	Wean	Year	MCE	Milk	MWW	Stay	Doc	CW	YG	Marb	REA	API	TI	GE EPDs	Disp	Score
16.8	-1.3	90.1	141.7	10.6	37.4	82.4	20.5	19.8	52.4	-0.44	0.39	1.25	\$172.8	\$98.4	Y	1	
3%	10%	15%	10%	2%	1%	1%	10%	1%	3%	40%	10%	3%	3%	3%			

There have been multiple conversations about letting this heifer leave our program. Jasmine is a maternal sister to our herd sire, Hilljack, and we think their young dam is a rising star. Her EPD profile looks like something we sat down and made up, but we don't make up numbers or manipulate them in any way. If EPDs are the best tool we have to predict performance, then it's vitally important we protect the integrity of the data we report.

J13F has nine EPDs / \$ indexes--half the economically important traits we measure with EPDs--rank her inside the top 3% of purebred females, and she ranks inside the top 15% for 15 traits. I think this female could make a few herd bulls! Individually, she posted performance ratios of 116/wean and 113/year while her dam has earned a wwr of 122 and EPD % rankings in the top 1% for MCE, Milk, Stay, and Doc. This cow family is for real, y'all.

Hook's Bozeman 8B
Colorado Bridle Bit E752
Bridle Bit Miss B452

BRIDLE BIT HERD BOOK H068

Hook's Yellowstone 97Y
Bridle Bit Miss C552
Bridle Bit Miss X023

Homozygous Black
Homozygous Polled
Purebred Simmental
Calved February 13, 2020
ASA 3724820
PQB GE A100K



PERFORMANCE					MATERNAL					CARCASS					\$ VALUES	
CE	Brth	Wean	Year	ADG	MCE	Milk	MWW	Stay	Doc	CW	YG	Marb	REA	SAPI	TI	
EPD 18.7	-3.8	66.8	101.1	0.21	11.0	30.3	63.7	18.3	13.3	29.5	-0.32	0.39	0.63	164.3	85.8	
ACC 0.48	0.52	0.49	0.50	0.50	0.28	0.23	0.32	0.30	0.28	0.50	0.39	0.47	0.48			
RANK 1%	1%				1%	10%		35%	30%			10%		10%	25%	

Owned by Martin Farms, Lyles, TN
Bred by Bridle Bit Simmentals, Walsh, CO



DONOR DAM OF LOT 46



CLVS SPRING VELVET 601D



RETAINING THE RIGHT TO ONE FLUSH WITH A MINIMUM OF 8 VIABLE EMBRYOS.
TO BE DONE AT THE BUYER'S CONVENIENCE AND THE SELLER'S EXPENSE





Ai bred to Hook's Beacon on 4/2 and exposed to Bridle Bit Herd Book from 4/12 until 5/10, then exposed to MF/BMF Hilljack from 5/10 until 6/15. Confirmed 89 days safe with a heifer calf on 7/14 so we're calling this one a Herd Book baby.



MF Juju J9G

from Martin Farms, Lyles

COLEMAN CHARLO 0256

S A V RAINFALL 6846

S A V BLACKCAP MAY 4136

SIMANGUS FEMALE

TJ COWBOY UP 529B

MF GHOST

MF ECHO



EXPECTED PROGENY DIFFERENCES by BOLT

CE	Brth	Wean	Year	MCE	Milk	MWW	Stay	Doc
11.0	-1.2	78.4	125.0	6.6	20.8	60.0	17.2	13.4
CW	YG	Marb	REA	API	TI	GE EPDs	Disp	Score
28.2	-0.06	0.66	0.45	\$156.4	\$89.4	Y	1	

Homozygous Black & Polled

ASA 3855377

Calved Jan. 2, 2021

Tattoo: J9G / RE

PQB A100K

Pasture bred to

BRIDLE BIT HERD BOOK H068

between 4/12 and 5/10 and

Due on or around 1/24/2023

Ultrasound: HEIFER calf



J46G is another good numbered High Road daughter from a practical, very easy keeping line of females. She's safe in calf to the exciting new herd bull at Running Springs, HA Justice, pasture exposed from 4/3 until 6/5/2022.



Miss RSCC J46G

from Running Springs Cattle Co., Nolensville

HOOK'S BEACON 56B

KBHR HIGH ROAD E283

WS MISS SUGAR C4

3/4 SM 1/4 AN FEMALE

CDI MISSION STATEMENT

LVL/KOM MARTINI

MF BLACK OLIVE

Homozygous Black & Polled

ASA 3868758

Calved Jan. 7, 2021

Tattoo: J46G / RE

PQS GE A100K

Pasture bred to

HA JUSTICE 30J

from 4/3 until 6/5/2022

Due on or around 2/22/2023

Sex of calf UNKNOWN

EXPECTED PROGENY DIFFERENCES by BOLT

CE	Brth	Wean	Year	MCE	Milk	MWW	Stay	Doc
12.8	0.0	81.6	123.6	6.5	27.1	67.9	18.2	13.0
CW	YG	Marb	REA	API	TI	GE EPDs	Disp	Score
23.1	-0.3	0.38	0.86	\$144.6	\$84.5	Y	n/a	



Hook's Shear Force 38K
 Hook's Beacon 56B
 Hook's Zafirah 41Z
MF/BMF HILLJACK H13F
 Hook's Bounty 6B
 MF Flower
 MF Zoey

Homozygous Black

Homozygous Polled

Purebred Simmental

Calved January 2, 2020

ASA 3748736

PQS GE 100K



PERFORMANCE					MATERNAL					CARCASS					\$ VALUES	
CE	Brth	Wean	Year	ADG	MCE	Milk	MWW	Stay	Doc	CW	YG	Marb	REA	SAPI	TI	
EPD 15.9	-1.6	88.3	136.5	0.30	11.2	33.5	77.6	26.8	18.1	47.3	-0.49	0.45	1.51	187.2	98.7	
ACC 0.50	0.54	0.51	0.51	0.51	0.32	0.27	0.35	0.38	0.26	0.52	0.41	0.46	0.51			
RANK 5%	10%	15%	15%	15%	1%	3%	4%	1%	2%	10%	20%	10%	1%	1%	3%	



Semen available at \$30/unit through Martin Farms or by contacting Allied Genetic Resources or ORigen

Bred & owned by Martin Farms, Lyles, Tennessee
 Born & raised at Beech Mile Farm, Spring Hill, Tennessee
 A Genetic Provider in Cooperation with Martin Farms

HOOK'S BEACON x HOOK'S BOUNTY x TNT TANKER x SRS PREFERRED BEEF x NICHOLS LEGACY
 EIGHTEEN YEARS. FIVE GENERATIONS. ONE BULL.





MF Jitterbug J9E

from Martin Farms, Lyles

KBHR HIGH ROAD E283

MR SR HIGHLIFE G1609

MISS SR D1609

MF JITTERBUG J9E

HOOK'S BEACON 56B

MF ECHO

MF PINK

Homozygous Black & Polled

ASA 3855391

Calved Jan. 2, 2021

Tattoo: J9E / RE

Pasture bred to

MF/BMF HILLJACK H13F

Due on or around 3/24/2023

Sex of calf UNKNOWN



EXPECTED PROGENY DIFFERENCES by BOLT

CE	Brth	Wean	Year	MCE	Milk	MWW	Stay	Doc
15.1	0.3	80.0	116.4	9.5	25.3	65.2	19.2	6.9
CW	YG	Marb	REA	API	TI	GE EPDs	Disp	Score
29.6	-0.52	0.34	1.14	\$156.5	\$87.3	Y	2	

Jitterbug has been another favorite in the pasture since this group hit the ground. The cow family serves as the foundation of our present day breeding program and breeding philosophies, and this heifer's grand dam, MF Pink, I'm convinced, is the best cow I've made so far. It is a life goal of mine now to make one I truly believe is "better" and that's no small task. I'm not sure I will ever accomplish that goal.

Jitterbug has a solid set of numbers with seven traits ranking inside the top 25% or better and anchored by a top 3% prediction in MCE. We consider her dam to be one of our better cows, and we already have her mated up for a flush or two next spring. This yearling has a striking blaze face that complements her structural correctness, clean lines, and future donor candidate presence. This is one we kinda hate to see leave the program.



MF Jamboree J258

from Martin Farms

KBHR WENTZ E190

KBHR HOMEWARD BOUND G083

WS MISS SUGAR C4

5/8 SM 3/8 AND FEMALE

COLBURN PRIMO 5153

WILBROS PRIME HUM F258

DIAMOND D HUM-11G 2X

Homozygous Black & Polled

ASA 3855375

Calved Jan. 13, 2021

Tattoo: J258 / RE

Pasture bred to MF/BMF

HILLJACK H13F

Due on or around 3/6/23

Sex of calf UNKNOWN



CE	Brth	Wean	Year	MCE	Milk	MWW	Stay	Doc
12.5	2.7	98.6	149.8	5.9	24.8	74.1	13.5	13.8
CW	YG	Marb	REA	API	TI	GE EPDs	Disp	Score
55.4	-0.09	0.25	0.5	\$128.3	\$86.9	Y	2	

J258 traces back to the Miss Kansas K cow on the bottom side and stacks Sugar C4 on top, giving her some clout and reason for serious consideration.

She sells pasture exposed to Bridle Bit Herd Book H068 from 4/12 until 5/10 and then exposed to MF/BMF Hilljack from 5/10 until 6/15. She was confirmed safe to the Hilljack exposure and due around the first of March.

TJ Teardrop Semen

from Running Springs Cattle Co., Nolensville

Mr NLC Upgrade U8676

TJ Main Event 503B

TJ Miss New Day U14

TJ TEARDROP 783F

Dikeman's Sure Bet

TJ MS 38W

TJ 12L

Homozygous Black

Homozygous Polled

3/4 SM 1/4 AN

Calved January 15, 2018

ASA 3459734

PQB GE 100K

PERFORMANCE					MATERNAL					CARCASS					\$ VALUES	
CE	Brth	Wean	Year	ADG	MCE	Milk	MWW	Stay	Doc	CW	YG	Marb	REA	SAPI	TI	
EPD 13.9	-0.8	83.1	123.2	0.25	6.2	36.7	78.2	22.1	14.6	26.9	-0.26	-0.05	0.59	\$131	\$76	
ACC 0.69	0.86	0.82	0.81	0.81	0.44	0.35	0.46	0.33	0.57	0.69	0.51	0.63	0.63			
RANK 30%	30%	25%	40%	60%	60%	1%	2%	2%	20%	70%	45%	99%	65%	50%	60%	

Deceased | Limited Availability





PHT Ms Witness 133H

from Taylor Farms, Midway, TN

OLF OTIS Y43

LCDR WITNESS 541C

WS MOTHER LODGE W21

3/4 SM 1/4 AN FEMALE

S D S GRADUATE 006X

PHT MS GRADUATE 25C

GIBBS 9083W JAUER 301

Homozygous Black & Polled

ASA 3988153

Calved Sept. 2, 2020

Tattoo: 133H / LE

Ai 4/29 to **TJ Commissioner**

Due to calve **Feb. 6, 2023**

Sex of calf UNKNOWN

EXPECTED PROGENY DIFFERENCES by BOLT

CE	Brth	Wean	Year	MCE	Milk	MWW	Stay	Doc
6.1	4.1	98.3	152.1	2.6	23.2	72.3	19.7	11.7
CW	YG	Marb	REA	API	TI	GE EPDs	Disp	Score
42.8	-0.39	-0.05	0.94	\$125.6	\$82.2			

WW and YW are further testament of the performance built into this cow family. Being Ai bred up early to TJ Commissioner 421G, we have a high level of confidence in this mating. Commissioner is a lower birth weight, calving ease bull that doesn't sacrifice growth of eye appeal. Bid until you own this one; you won't be disappointed!

This heifer will not require a second look; she'll command your attention at first glance. 133H can hardly be anything other than powerful, attractive, and productive--it's what she was bred to be! Her dam and grand dam have both excelled at producing top performers that are very attractive. Single digit EPD rankings for both



PHT Ms Dakota Road 147J

from Taylor Farms, Midway

HOOK'S BEACON 56B

KBHR HIGH ROAD E283

WS MISS SUGAR C4

PUREBRED FEMALE

LRS ELEVATE 213B

PHT MS DAKOTA 86G

LRS MS DAKOTA 559R

Homozygous Black & Polled

ASA 4034242

Calved Jan. 22, 2021

Tattoo: 147J / LE

Ai 4/29 to **TJ Stone Cold**

Due to calve **Feb. 6, 2023**

Sex of calf UNKNOWN

EXPECTED PROGENY DIFFERENCES by BOLT

CE	Brth	Wean	Year	MCE	Milk	MWW	Stay	Doc	CW	YG	Marb	REA	API	TI	GE EPDs	Disp	Score
12.6	0.3	89.3	136.6	6.0	29.6	74.2	17.2	10.9	42.2	-0.46	0.30	1.26	\$152.2	\$92.3			
30%	25%	15%	15%	45%	15%	10%	50%	60%	15%	30%	20%	3%	15%	10%			

STOP AND STUDY this purebred heifer and her pedigree. Look at her grand dams closely and you will see a couple of the breed's greats! Wow! Sugar C4 and 559R in one package. Both of these cows were just listed among the "Most Prolific Donor Cows" in the most recent edition of "the Register." This young prospect also touts a supremely

balanced set of EPDs with 13 in the top 30% and 10 of those in the top 15%! 147J is safe in calf to the increasingly popular TJ Stone Cold 336G. FYI Stone Cold traces back to the widely known Apple cow (she is on the previously mentioned list too!) Too much?... Stone Cold produces a good number of those popular baldies!





PHT Ms Janet 139J

from Taylor Farms, Midway

HOOKS SHEAR FORCE 38K

S D S GRADUATE 006X

S D S QUEEN 814U

5/8 SM 3/8 AN FEMALE

CCR COWBOY CUT 5048Z

PHT MS COWGIRL 97G

CHIMNEY TOP UPW LUCY A69

Homozygous Black & Polled

ASA 4034244

Calved Jan. 14, 2021

Tattoo: 139J / LE

Ai 4/29 to **TJ Stone Cold**

Due to calve **Feb. 6, 2023**

Sex of calf UNKNOWN

EXPECTED PROGENY DIFFERENCES by BOLT

CE	Brth	Wean	Year	MCE	Milk	MWW	Stay	Doc
15.6	-1.5	85.0	131.2	8.4	24.0	66.5	19.8	13.4
CW	YG	Marb	REA	API	TI	GE EPDs	Disp	Score
41.4	-0.28	0.28	0.95	\$150.7	\$86.2			

Looking for a bred heifer with great EPDs (12 in the top 25%)? How about a pedigree full of sires with a reputation for making maternal females? What if we make her attractive with good conformation and AI bred to a popular sire? Well, give the auctioneer a nod when this one's number comes up! It's hard to find much fault with this heifer, and we think you will be very pleased to own her every year at weaning time.



PHT Ms El Dorado 126H

from Taylor Farms, Midway

HOOK'S YELLOWSTONE 97Y

PHT EL DORADO 14E

CHIMNEY TOP UPW LUCY A69

SIMANGUS FEMALE

PVF-J 4P14 HYB ROOKIE

GIBBS 0708X HY RKE N965

WDG MS EXT DICE N965

Homozygous Black & Polled

ASA 3708385

Calved Mar. 19, 2020

Tattoo: 126H / LE

Genomic: n/a

Ai 4/30 to **TJ Stone Cold**

Due to calve **Feb. 7, 2023**

Sex of calf UNKNOWN

EXPECTED PROGENY DIFFERENCES by BOLT

CE	Brth	Wean	Year	MCE	Milk	MWW	Stay	Doc
14.1	0.0	79.0	126.6	7.6	25.7	65.1	15.9	6.9
CW	YG	Marb	REA	API	TI	GE EPDs	Disp	Score
43.1	-0.18	0.38	0.70	\$141.5	\$82.9			

This stout bred heifer's dam is a really moderate "X" model Rookie daughter that has weaned more than one calf as big as she is. We



PHT Ms Big Jake 158J

from Taylor Farms, Midway

HOOK'S BEACON 56B

PHT BIG JAKE 40F

CHIMNEY TOP UPW LUCY A69

SIMANGUS FEMALE

DIKEMANS SURE BET

GIBBS 3432A ROSE 4P24

PVF 4P24 ROSE 0215 OF VF

Homozygous Black & Polled

ASA 4034210

Calved March 19, 2021

Tattoo: 158J / LE

Genomic: n/a

Ai 4/29 to **TJ Frosty**

Due to calve **Feb. 6, 2023**

Sex of calf UNKNOWN

EXPECTED PROGENY DIFFERENCES by BOLT

CE	Brth	Wean	Year	MCE	Milk	MWW	Stay	Doc
13.4	-0.7	75.3	118.0	6.5	25.1	62.7	17.3	14.0
CW	YG	Marb	REA	API	TI	GE EPDs	Disp	Score
40.0	-0.14	0.55	0.75	\$151.2	\$85.0			

158J is an especially clean made heifer with EPDs balanced enough to offer a lot of mating flexibility. The calf she is carrying by TJ Frosty has a ton of potential. Remember, Frosty, well-

THE BRED HEIFER DIVISION



PHT Ms Highroad 145J

from Taylor Farms, Midway

HOOK'S BEACON 56B

KBHR HIGH ROAD E283

WS MISS SUGAR C4

5/8 SM 3/8 AN FEMALE

S A V RAINDANCE 6848

PHT MS RAINDANCE 76F

PHT DUAL ROOKIE 023A

Homozygous Black & Polled

ASA 4034235

Calved 1/14/22

Tattoo: 145J / LE

Ai 4/29 to **TJ Stone Cold**

Due to calve **Feb. 6, 2023**

Sex of calf UNKNOWN

EXPECTED PROGENY DIFFERENCES by BOLT

CE	Brth	Wean	Year	MCE	Milk	MWW	Stay	Doc
15.2	0.3	90.1	140.3	6.8	25.5	70.5	17.2	14.7
CW	YG	Marb	REA	API	TI	GE EPDs	Disp	Score
48.9	-0.21	0.42	0.94	\$151.4	\$90.6			

This bred heifer sports a remarkable EPD profile having 10 in the top 20% of the breed. Her pedigree is full of recognizable names, and she traces back to a former Taylor Farms donor, 023A. 145J is going to make a stout framed cow that has the potential to raise some heavy calves your bull customers are going to like.



expect 126H to make one of those "honest" cows that weans a big calf every year. She comes with a balanced set of numbers, and as a bonus, she sells safe in calf to the popular baldy, TJ Stone Cold.



known in his own right, has produced some notable young sires, including TJ Stone Cold and TJ Chief that are destined to leave their mark.



THF Huge Event is an ET heifer we purchased as a frozen embryo through a past Open House at the Farm event at Martin Farms. We had two impressive bull flush mate brothers to her, and we used both of them in our own program. Her dam, NB Regina, sold for \$8,500 as a bred heifer through the TN Fall Showcase event and then found



MF Black Pearl was one of the four original bred heifers that served as the foundation of our current breeding program at Toy Hill. Chris had the picked out to stay and enter the herd at Martin Farms, but Becky saw her in the pasture and knew she'd have better luck dealing with Neil. She did. Neil petitioned Chris on Becky's behalf, and reluctantly, he agreed to let her go. After we weaned this set of calves, Chris picked out three he said we should watch and consider



Helena is a young bred heifer whose pedigree contains **three** of the most influential cows from the Martin Farms breeding program, MF Vanilla Bean, MF Pink, and MF Yoo Hoo.



Miss THF Huge Event

from Toy Hill Farm, Bon Aqua

MR NLC UPGRADE U8676

TJ MAIN EVENT 503B

TJ MISS NEW DAY U14

SIMANGUS FEMALE

COLEMAN REGIS 904

NB REGINA 71Z

NB DREAMBOAT ANNE 5U

Homozygous Black & Polled

ASA 3877423 ET

Calved Oct. 4, 2020

Tattoo: H8Z / LE

Genomic: PQB GE A100K

Pasture bred to

MF Judgment J02G

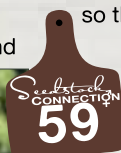
Due on or around 2/2/23

Ultrasound: **BULL calf**

EXPECTED PROGENY DIFFERENCES by BOLT

CE	Brth	Wean	Year	MCE	Milk	MWW	Stay	Doc
14.2	-2.4	69.9	110.9	7.2	22.4	57.3	18.1	18.6
CW	YG	Marb	REA	API	TI	GE EPDs	Disp	Score
32.3	-0.16	0.23	0.45	\$138.1	\$76.1	Y	2	

her final home with Williams Brothers of MO when she entered their donor program, upping her valuation to \$9,500. Regina is now gone, so the chances to own a daughter are limited!



Miss THF Heavenly Pearl

from Toy Hill Farm, Bon Aqua

BASIN PAYWEIGHT 1682

MF FOUNDATION F876

MF YOO HOO

3/4 BLOOD FEMALE

3C SOUTHBOUND W9350

MF BLACK PEARL

MF PEARL

Homozygous Black & Polled

ASA 3877428

Calved Oct. 30, 2020

Tattoo: H53Z / LE

Genomic: PQB GE A100K

Pasture bred to

MF Judgment J02G

Due on or around 2/6/23

Sex of calf UNKNOWN

EXPECTED PROGENY DIFFERENCES by BOLT

CE	Brth	Wean	Year	MCE	Milk	MWW	Stay	Doc
12.5	0.1	74.0	112.7	8.5	24.0	60.9	20.9	14.4
CW	YG	Marb	REA	API	TI	GE EPDs	Disp	Score
33.5	-0.24	0.18	0.62	\$135.4	\$74.3	Y	2	

keeping back for our herd; This one was at the top of his list.

Black Pearl has earned her way as well as the title of herd favorite.

At 10 years of age, she posts an average calving interval of 363 days on nine calves and has two daughters also working in our herd. This daughter, Lot 51, sells safe in calf to our pick of Martin Farms' bull calves last year, MF Judgment, and she's due early February 2023.



Miss THF Helena

from Toy Hill Farm, Bon Aqua

BASIN PAYWEIGHT 1682

MF FOUNDATION F876

MF YOO HOO

3/4 SM 1/4 AN FEMALE

MF/THF STRAIGHT SHOT

MISS THF FRANCIS

48C RICHELLE 89B

Homozygous Black & Polled

ASA 3877421

Calved Oct. 28, 2020

Tattoo: H89F / LE

Genomic: PQB GE A100K

Pasture bred to

MF Judgment J02G

Due on or around 3/12/23

Ultrasound: **BULL calf**

EXPECTED PROGENY DIFFERENCES by BOLT

CE	Brth	Wean	Year	MCE	Milk	MWW	Stay	Doc
13.8	-0.1	75.7	110.6	8.9	22.4	60.2	18.1	15.7
CW	YG	Marb	REA	API	TI	GE EPDs	Disp	Score
20.6	-0.24	0.31	0.43	\$138.6	\$78.4	Y	2	

She's been examined safe in calf to the Guardian son, MF Judgment J02G, with a bull calf due on or around March 12.

Hook's Bozeman 8B
Colorado Bridle Bit E752
Bridle Bit Miss B452

BRIDLE BIT TROUBADOUR J158

Hook's Encore 65E
Bridle Bit Miss G959
Bridle Bit Miss 8417

Homozygous Black
Homozygous Polled
Purebred Simmental
Calved February 4, 2021
ASA 3891251
PQB GE 100K



PERFORMANCE					MATERNAL					CARCASS					\$ VALUES	
CE	Brth	Wean	Year	ADG	MCE	Milk	MWW	Stay	Doc	CW	YG	Marb	REA	SAPI	\$TI	
EPD 14.2	-0.3	90.4	131.8	0.26	8.8	31.7	76.9	13.4	16.7	34.3	-0.26	0.33	0.59	136.6	88.9	
ACC 0.46	0.49	0.47	0.48	0.48	0.25	0.18	0.28	0.27	0.31	0.48	0.38	0.45	0.46			
RANK 15%	20%	15%	20%	40%	10%	10%	5%		4%	3%		15%		40%	15%	

Owned by Taylor Farms | Midway, TN

Bred by Bridle Bit Simmental, Walsh, CO

**PHT Ms Jill 143J**

from Taylor Farms, Midway

G A R MOMENTUM

G A R INERTIA

G A R PROPHET 2984

3/8 SM 5/8 AN FEMALE

HOOKS ADMIRAL 33A

PHT ORCHID 87G

MF PINK

Homozygous Black & Polled
ASA 4034215

Calved Jan. 18, 2021

Tattoo: 143J / LE

Genomic: n/a

Pasture bred to Bridle Bit
Troubadour J158. Pregnancy
status available sale day.

EXPECTED PROGENY DIFFERENCES by BOLT

CE	Brth	Wean	Year	MCE	Milk	MWW	Stay	Doc
12.3	1.4	91.0	147.0	9.5	21.2	66.6	14.7	12.4
CW	YG	Marb	REA	API	TI	GE EPDs	Disp	Score
59.0	-0.01	0.65	0.75	\$148.0	\$91.4	no	n/a	

This quiet-natured young female comes from a cow family very familiar to the Martin Farms program and well-known among its friends--MF Pink. 143J offers solid growth and carcass EPDs sporting top 10% rankings for WW, YW, ADG, and Marb as well as \$TI.



Phenotypically, she's made right and sound structured. She'll be carrying the service of our new junior herd sire at Taylor Farms, Bridle Bit Troubadour J158. Chad Cook told us to "keep every female" out of Troubadour, and we suspect the bulls won't be culls either! Take this heifer home and feel confident her calf will make the keeper pen.

**PHT Ms Courtney 129H**

from Taylor Farms, Midway

OLF OTIS Y43

LCDR WITNESS 541C

WS MOTHER LODGE W21

SIMANGUS FEMALE

TNT DUAL FOCUS T249

PHT DUAL ROOKIE 023A

GIBBS 0694X GEORGIA 6S10

Homozygous Black & Polled
ASA 4034326

Calved Aug. 27, 2020

Tattoo: 129H / LE

Pasture bred to Bridle Bit
Troubadour J158. Pregnancy
status available sale day.

EXPECTED PROGENY DIFFERENCES by BOLT

CE	Brth	Wean	Year	MCE	Milk	MWW	Stay	Doc
11.5	1.8	89.4	135.9	5.3	19.1	63.7	16.6	11.6
CW	YG	Marb	REA	API	TI	GE EPDs	Disp	Score
45.7	-0.24	0.09	0.69	\$123.2	\$78.5	no	n/a	

This heifer is sired by the power bull Witness. Her dam is a former donor for Taylor Farms that has produced several nice females as well as bulls. 129H will be bred to our new junior herd sire, a son of Colorado Bridle Bit E752, Bridle Bit Troubadour J158.

**PHT Ms Upgraded Rookie 157J**

from Taylor Farms, Midway

MR NLC UPGRADE U8676

RHODES UPGRADE A35

RHODES MINA 705

PHT MS UPGRADED ROOKIE 157J

PVF-J 4P14 HYB ROOKIE

GIBBS 0654X HY RKE S177

GIBBS S177 HY BLG P381

Homozygous Black;
Double Polled

ASA 4034239

Calved Jan. 1, 2020

Tattoo: 157J / LE

Pasture bred to Bridle Bit
Troubadour J158. Pregnancy
status available sale day.

EXPECTED PROGENY DIFFERENCES by BOLT

CE	Brth	Wean	Year	MCE	Milk	MWW	Stay	Doc
12.2	-0.9	66.3	103.4	7.1	21.0	54.1	15.0	7.0
CW	YG	Marb	REA	API	TI	GE EPDs	Disp	Score
29.1	-0.26	0.24	0.63	\$125.4	\$72.1	no	n/a	

This heifer is one that could easily be overlooked. Yes, she is smaller than the others, but she wouldn't have made the cut if not for our confidence in the genetics behind her. Her dam is one whale of a cow--so wide and deep! And her sire was a stud that set the bar for herdsires at Taylor Farms. 157J was the youngest heifer in the keeper pen, so she's lived at the bottom of the pecking order. She could be the one that cattlemen love to talk about; you know her- "you bought her right and she's as good a cow as anything on the place!" She'll be bred to our new bull, J158.

This sale will be broadcast live on the internet.

DVAuction
Broadcasting Real-Time Auctions
Real time bidding & proxy bidding available.

ALLIED
GENETIC RESOURCES

**MF/WTR Hannah H330***from Martin Farms, Lyles*

PROSTOCK HUGO 7052T

JL HUGO 573

JL ASIA Y61

PUREBRED FEMALE

SWEET C&S CIGAR

MF RAVE ON

83 RA

Non-Diluter Red

Double Polled

ASA 3815733

Calved Sept. 5, 2020

Tattoo: H330 / RE

PQB A100K

Ai 1/6 to **IR IMPERIAL**Due to calve **Oct. 16, 2022**Ultrasound: **HEIFER** calf

EXPECTED PROGENY DIFFERENCES by BOLT

CE	Brth	Wean	Year	MCE	Milk	MWW	Stay	Doc
10.8	0.9	65.1	96.0	8.2	29.4	61.9	14.1	3.9
CW	YG	Marb	REA	API	TI	GE EPDs	Disp	Score
20.9	-0.36	0.1	0.53	\$119.9	\$70.7	Y	2	



Imperial has been proven to work very successfully on the Hugo daughters. Ask Jay Covington of Fair Haven Simmental about his Imperial x Hugo bred heifer. If he's shy about telling you, I'll just say it...she's good! This one ought to work, too... Hannah has the size and scale and growth to click with a bull like Imperial.

**MF/WTR Heartstrings H28F***from Martin Farms, Lyles*

IR IMPERIAL B772

IR IMPERIAL D948

IR MS DUAL FOCUS W086

PUREBRED FEMALE

JL HUGO 573

MF/WTR FLORA

RED 28Z

Non-Diluter Red

Homozygous Polled

ASA 3815741

Calved Nov. 8, 2020

Tattoo: H28F / RE

PQS A100K

Pasture bred to **BRIDLE BIT**
HERD BOOK H068 and due
to calve **mid December**.

Sex of calf UNKNOWN

EXPECTED PROGENY DIFFERENCES by BOLT

CE	Brth	Wean	Year	MCE	Milk	MWW	Stay	Doc
11.9	-1.3	59.6	89.3	6.7	22.2	51.9	19.6	10.9
CW	YG	Marb	REA	API	TI	GE EPDs	Disp	Score
25.8	-0.36	0.55	0.81	\$159.6	\$80.9	Y	1	

H28F earned recognition as a genetic improver with a G+ stamp through the RightChoice accreditation program, so you can feel confident she'll make the right kind.



This dark red Imperial daughter's best days are ahead of her. She will mature into a practical and productive cow, and her gentle attitude makes her easy to be around.

**MF Honey H41Z***from Martin Farms, Lyles*

PROSTOCK HUGO 7052T

JL HUGO 573

JL ASIA Y61

3/4 SM 1/4 AR FEMALE

SHADY'S BECK/JULIAN 7177

RED P41Z

P41

Non-Diluter Red

Homozygous Polled

ASA 3748037

Calved Oct. 12, 2020

Tattoo: H41Z / RE

Pasture bred to **BRIDLE BIT**
HERD BOOK H068 and due
to calve **mid December**.

Sex of calf UNKNOWN

EXPECTED PROGENY DIFFERENCES by BOLT

CE	Brth	Wean	Year	MCE	Milk	MWW	Stay	Doc
CW	YG	Marb	REA	API	TI	GE EPDs	Disp	Score
						pending	2	



Honey is a bigger framed, performance-oriented Hugo daughter that should cross very well with the Bridle Bit Herd Book bull we

purchased last year. We'll have an update on her genomic status sale day, but she'll sell safe in calf and due late this fall.



MF/WTR Gingersnap G41Z

from Running Springs Cattle Co., Nolensville

PROSTOCK HUGO 7052T

JL HUGO 573

JL ASIA Y61

3/4 SM 1/4 AR FEMALE

SHADY'S BECK/JULIAN 7177

RED P41Z

P41

Non-Diluter Red

Homozygous Polled

ASA 3697784

Calved Sept. 12, 2019

Tattoo: G41Z / RE

PQB



Ai'd 12/20 to IR IMPERIAL

Due to calve Oct. 1, 2022

Ultrasound: HEIFER calf

EXPECTED PROGENY DIFFERENCES by BOLT

CE	Brth	Wean	Year	MCE	Milk	MWW	Stay	Doc
10.4	0.7	69.4	111.8	6.7	33.4	68.1	10.6	7.4
CW	YG	Marb	REA	API	TI	GE EPDs	Disp	Score
30.6	-0.53	0.13	1.03	\$109.1	\$71.9	Y	1	

Gingersnap is a full sister to the dam of Jay Covington's good Imperial daughter. She also happens to look almost identical to her big sister, Ruby Red, who was one of the high-selling bred

BRED HEIFERS & YOUNG COWS



heifers and overall favorite lots of the 2020 sale. That gets us pretty excited about her IR Imperial heifer calf due right around sale time which will be a full sister in blood to Jay's "Sophie" heifer.



MF/WTR Gretchen G912

from Beech Mile Farm, Martin Farms Co-op

PROSTOCK HUGO 7052T

JL HUGO 573

JL ASIA Y61

PUREBRED FEMALE

HOOKS SHEAR FORCE 38K

JAXR SHEAR DREAMS

EBER 3057S OF DREAM

Non-Diluter Red

Homozygous Polled

ASA 3697755

Calved

Tattoo: G912 / RE

PQB GE A100K

Exposed to MF JACKPOT since April 25 and confirmed 74 days safe in calf on 7/14.

Due on or around 2/12/2023

Ultrasound: BULL calf

EXPECTED PROGENY DIFFERENCES by BOLT

CE	Brth	Wean	Year	MCE	Milk	MWW	Stay	Doc
11.0	1.2	78.5	113.6	7.2	33.6	72.8	15.0	5.3
CW	YG	Marb	REA	API	TI	GE EPDs	Disp	Score
27.1	-0.60	0.08	1.18	\$127.0	\$79.5	Y	1	



Gretchen is a gentle, homozygous polled, 3/8 Fleckvieh, purebred red baldy out of the top cow at WTR. She did a nice job with her first calf and sells bred back to MF Jackpot who sells as Lot 88. Her full sister, MF/WTR Red Fern, topped the bred heifer division at the 2020 Seedstock Connection Sale at \$3,700.

REFERENCE | JL HUGO 573



(clockwise from below)
IR Imperial, service sire of Lot 64 and Lot 67 and sire of Lot 65; JL Hugo, sire of six calf crops at White Trash Ranch; J. I. and Joanie at Martin Farms for the 2015 Open House at the Farm

REFERENCE | IR IMPERIAL D948



We've been selling a handful of red, Fleckvieh-influenced bred heifers and bulls through our sale for several years. All those cattle and all the red females in this sale were bred and raised by our good friends at White Trash Ranch, J. I. and Joanie Allison. Everyone who loved J. I. lost a dear friend August 22 when he passed, and I know he had many, many friends.

J. I. and Joanie moved to the farm in the mid 1970s. They soon became some of our first seedstock customers, buying some of the first registered females Dad ever sold at public auction. We have enjoyed working closely with them as a cooperator for several years.

J. I. was born in Lubbock, Texas where he met Buddy Holly when he was in the 7th grade. Still in high school, J. I. and Buddy were performing at sock hops, roller rinks, and other gigs in West Texas and eastern New Mexico before he became an original member of Buddy Holly and The Crickets. He was an accomplished songwriter and a talented musician, but a lot of us knew him best as a cool guy who told great stories and who always welcomed us into his home or out onto the deck with a warm smile and a cold beer. He loved to talk about the cows, and he looked forward to every new crop of baby calves like a kid waiting for Christmas morning. He will be deeply missed.



Onyx E13B is a Cowboy Cut x Yellowstone female that traces back to BOZ Y227 and Big Sandy Ranch R821, the full sister and dam of Black Mick, Irish Black Knight, and Red Brother through Black Missy 512 bred by River Creek and C-B Preferred Missy bred by Circle Bar. She has a little bit o' cow family going on.



G87A is backed by several generations of modest framed, easy fleshing, low maintenance cows that make efficient work of converting forage into beef. She earned a RightChoice stamp of approval with a G+ rating, and she'll calve right around sale day to her top genetic match on our RightMate list, Stone Cold.



Kitty E34C represents the popular and productive Vanilla Bean cow family. Her dam, MF Cookie, was our pick of the Vanilla Bean flush sisters and high-selling lot from the 2016 Open House at the Farm sale, and she has established her presence in our herd.



Miss RSCC Onyx E13B

from Running Springs Cattle Co., Nolensville

TRIPLE C SINGLETARY S3H

CCR COWBOY CUT 5048Z

CCR MS 4045 TIME 7322T

PUREBRED FEMALE

HOOK'S YELLOWSTONE 97Y

MF/THF RHINESTONE

MF UPPITY

RightMate
powered by TOP GENOMICS

EXPECTED PROGENY DIFFERENCES by BOLT

CE	Brth	Wean	Year	MCE	Milk	MWW	Stay	Doc
6.6	3.7	88.7	135.0	4.3	23.5	67.8	18.0	17.2
CW	YG	Marb	REA	API	TI	GE EPDs	Disp	Score
39.2	-0.38	0.26	1.00	\$136.7	\$84.7	Y	n/a	

This good young cow has recorded maternal ratios of 102/ww and 110/yw on two progeny that both earned the title of heaviest yearling weight in their contemporary groups. What would you reckon her Teardrop heifer calf will be worth a year from now?

Homozygous Black & Polled

Calved Sept. 1, 2017

ASA 3359227

Tattoo: E13B / RE

PQB 47K

Ai 12/20 to **TJ TEARDROP**

#1 RightMate

Due **Oct. 1, 2022**

Ultrasound: **HEIFER** calf



Miss RSCC Gussie G87A

from Running Springs Cattle Co., Nolensville

GIBBS 4340B NIGHTHAWK

GIBBS 6176D FACEBOOK

GIBBS 4072B GINGER 2522Z

5/8 SM 3/8 AN FEMALE

BOLD FUTURE

MISS WEF FUTURAMA A87

DAB BLACKTOP 2222

RightMate
powered by TOP GENOMICS

EXPECTED PROGENY DIFFERENCES by BOLT

CE	Brth	Wean	Year	MCE	Milk	MWW	Stay	Doc
13.5	-0.7	67.3	98.5	9.5	23.3	56.9	12.2	-0.7
CW	YG	Marb	REA	API	TI	GE EPDs	Disp	Score
9.7	-0.32	0.56	0.81	\$138.1	\$80.8	Y	n/a	

Heterozygous Black;

Homozygous Polled

ASA 3708446

Calved Aug. 28, 2019

Tattoo: G87A / RE

PQB 100K

Ai 12/20 to **TJ STONE COLD**

#1 RightMate

Due **Oct. 1, 2022**

Ultrasound: **BULL** calf



Miss RSCC Kitty E34C

from Running Springs Cattle Co., Nolensville

HOOVER DAM

CCR BOULDER 1339A

CCR MS L TAYLOR 1339Y

SIMANGUS FEMALE

MSR GREAT PLAINS 3793A

MF COOKIE

MF VANILLA BEAN

RightMate
powered by TOP GENOMICS

EXPECTED PROGENY DIFFERENCES by BOLT

CE	Brth	Wean	Year	MCE	Milk	MWW	Stay	Doc
5.9	4.7	85.8	135.5	2.7	25.4	68.2	16.6	21.5
CW	YG	Marb	REA	API	TI	GE EPDs	Disp	Score
35.1	-0.19	0.74	0.53	\$145.7	\$88.9	Y	n/a	

Homozygous Black & Polled

ASA 3359231

Calved Sept. 26, 2017

Tattoo: E34C / RE

PQB 47K

Ai 12/20 to **KBHR HONOR**

#1 RightMate

Due **Oct. 1, 2022**

Ultrasound: **BULL** calf

E34C is a beautiful daughter of Boulder, and her photo does not do her justice. She maintains a 379-day calving interval on three progeny, and her 2021 bull calf by MF G-Force posted a wwr of 112. Another #1 RightMate mating carrying a bull calf by Honor!



Miss RSCC Futuristic E54A

from Running Springs Cattle Co., Nolensville

TRIPLE C SINGLETARY S3H

CCR COWBOY CUT 5048Z

CCR MS 4045 TIME 7322T

3/4 SM 1/4 AN FEMALE

BOLD FUTURE

MISS WEF FUTURISTIC A54

DAB LADY GRACE 2147

RightMate
powered by TOP GENOMICS

EXPECTED PROGENY DIFFERENCES by BOLT

CE	Brth	Wean	Year	MCE	Milk	MWW	Stay	Doc
7.6	4.4	88.1	128.5	5.6	23.0	67.0	17.7	18.6
CW	YG	Marb	REA	API	TI	GE EPDs	Disp	Score
45.0	-0.19	0.50	0.67	\$136.3	\$84.0	Y		

E54A maintains a 368-day calving interval and a ww ratio of 101 after three calves. The bull calf she's carrying due right after sale day was created with guidance by RightMate, and his \$102,500 sire was one of the most popular Simmental bulls to sell in 2021.

Homozygous Black & Polled

ASA 3359223

Calved Aug. 26, 2017

Tattoo: E54A / RE

PQB 47K

Ai 12/20 to KBHR HONOR

Due Oct. 1, 2022

Ultrasound: BULL calf



A daughter sired by TJ Gold is among our top picks of the 2021 Fall heifer crop which will be available for you to evaluate in Lot 2.



Miss RSCC Opal G53C

from Running Springs Cattle Co., Nolensville

MCM TOP GRADE 018X

HOOK'S BOUNTY 6B

HOOK'S YUMA 49Y

PUREBRED FEMALE

MF ALTER EGO

MISS RSCC OPAL C53A

MF AMETHYST

RightMate
powered by TOP GENOMICS

EXPECTED PROGENY DIFFERENCES by BOLT

CE	Brth	Wean	Year	MCE	Milk	MWW	Stay	Doc
5.4	3.7	82.9	135.6	4.8	31.9	73.3	23.4	6.9
CW	YG	Marb	REA	API	TI	GE EPDs	Disp	Score
49.2	-0.47	0.11	1.10	\$137.6	\$79.0	Y	n/a	

This Bounty daughter is a high-performance female that recorded impressive ratios of 115/ww and 112/yw. Her first heifer calf by TJ Gold is among the Lot 2 pick heifers with a wwr of 102.

Homozygous Black;

Heterozygous Polled

ASA 3708431

Calved Sept. 6, 2019

Tattoo: G53C / RE

PQB 100K

Ai to GW TRIPLE CROWN

12/20; due Oct. 1, 2022

Ultrasound: HEIFER calf



This female traces to the oldest cow family presently represented in the Martin Farms program, 1539F. A baldy with some size and stature and a gentle disposition carrying a GW Triple Crown heifer calf created with RightMate... What's not to like about this deal?



Miss RSCC Gossip Girl G59E

from Running Springs Cattle Co., Nolensville

JC MR WARDEN 844A

CDI MISSION STATEMENT

CDI MS 701T 13Z

PUREBRED FEMALE

HOOK'S BROADWAY 11B

MISS RSCC BROADWAY GIRL E59

SS MAGNIFICENT DREAMS

RightMate
powered by TOP GENOMICS

EXPECTED PROGENY DIFFERENCES by BOLT

CE	Brth	Wean	Year	MCE	Milk	MWW	Stay	Doc
10.5	1.0	68.7	103.1	7.1	27.7	62.0	22.4	5.0
CW	YG	Marb	REA	API	TI	GE EPDs	Disp	Score
15.1	-0.34	0.44	0.53	\$156.7	\$81.1	Y	n/a	

G59E is a modest-sized, attractive young female with extra shape and spring of rib. We think the Proclamation mating will sure work on this female, and we're even more confident about it with the

Homozygous Black & Polled

Calved Oct. 7, 2019

Tattoo: G59E / RE

ASA 3708442

PQB 100K

Ai to WS PROCLAMATION

on 12/20; Due Oct. 1, 2022

Ultrasound: BULL calf



approval of RightMate. This female checks a lot of boxes, including being backed by a legit cow family--Magnificent Dreams, Magnetic Lady, and Ebony Antoinette. Be sure you find her.



PHT Sister Sara 63F

from Water's Edge Farm, Franklin

HOOKS SHEAR FORCE 38K

HOOK'S BEACON 56B

HOOKS ZAFIRAH 41Z

SIMANGUS FEMALE

SITZ UPWARD 307R

CHIMNEY TOP UPW LUCY A69

CHIMNEY TOP OBJ LUCY Y67

Homozygous Black & Polled

ASA 3544548 ET

Calved Feb. 16, 2018

Tattoo: 63F / LE

Ai 12/30 to **GIBBS 9114Y**

ESSENTIAL and safe in calf.

Due to calve **Oct. 10, 2022.**

Ultrasound: **BULL** calf

63F originated in Patrick Taylor's good herd and came to WEF as a bred heifer through the 2019 Open House at the Farm sale. She puts together an impressive set of numbers, and the planned mating figures on her Essential calf due right after sale time are even better!

We think this one has a lot of potential to be a real rock star!

EXPECTED PROGENY DIFFERENCES by BOLT

CE	Brth	Wean	Year	MCE	Milk	MWW	Stay	Doc	CW	YG	Marb	REA	API	TI	GE EPDs	Disp Score
16.1	-2.3	84.8	137.2	9.1	24.3	66.7	19.4	10.0	53.3	-0.15	0.79	1.05	\$180.3	\$99.6	no	n/a
15%	15%	20%	15%	15%	40%	25%	15%		4%		4%	4%	2%	2%		



PHT Ms Pansy 91G

from Taylor Farms, Midway

HOOKS SHEAR FORCE 38K

HOOK'S BEACON 56B

HOOKS ZAFIRAH 41Z

SIMANGUS FEMALE

SITZ UPWARD 307R

CHIMNEY TOP UPW LUCY A69

CHIMNEY TOP OBJ LUCY Y67

Homozygous Black & Polled

ASA 3661919 ET

Calved Feb. 16, 2019

Tattoo: 91G / LE

Safe in calf to **PHT**

MCLINTOCK 96H

Something Special Here! Look at this number profile: API \$178.8 TI \$100.5. This is a direct daughter of Taylor Farms' donor A69. 91G raised us a nice Franchise daughter that we are retaining. We wanted to bring some nice cattle and this one could be our best. If you are looking for a good young cow with true potential to produce something special, then put 5 stars beside her in your catalog.

EXPECTED PROGENY DIFFERENCES by BOLT

CE	Brth	Wean	Year	MCE	Milk	MWW	Stay	Doc	CW	YG	Marb	REA	API	TI	GE EPDs	Disp Score
16.4	-1.0	89.1	143.5	9.6	25.0	69.5	19.4	11.3	55.9	-0.15	0.79	1.07	\$179.9	\$100.7	no	n/a
10%	30%	15%	10%	10%	30%	15%	15%		3%		4%	4%	2%	1%		



PHT Ms Courtney 30C

from Taylor Farms, Midway

S D S GRADUATE 006X

PHT GRADUATE 121Z

GIBBS 9083W JAUER 301

5/8 SM 3/8 AN FEMALE

TNT DUAL FOCUS T249

PHT DUAL ROOKIE 023A

GIBBS 0694X GEORGIA 6S10

Homozygous Black & Polled

ASA 3137451

Calved Mar. 18, 2015

Tattoo: 30C / LE

Safe in calf to **PHT**

MCLINTOCK 96H

EXPECTED PROGENY DIFFERENCES by BOLT

CE	Brth	Wean	Year	MCE	Milk	MWW	Stay	Doc	CW	YG	Marb	REA	API	TI	GE EPDs	Disp Score
14.2	-0.4	77.5	116.0	6.1	25.0	63.7	20.9	13.7	34.9	-0.20	0.23	0.64	\$141.8	\$78.2	no	n/a

With a top 5% rank for Stay, this cow is in her prime and is sound enough to stick around and produce several more calves. If you like cows with some size and stature, she's your type!



Miss WEF Highfalutin

from Taylor Farms, Midway

LONG'S SHEAR PLEASURE

GIBBS 1084Y TUX & TAILS

GIBBS 7241T SM BET L138

SIMANGUS FEMALE

S A V BISMARCK 5682

LONE OAKS EVERELDA Y155

LONE OAKS EVERELDA U116

Homozygous Black & Polled

ASA 3192387

Calved

Tattoo: D155 / BE

Safe in calf to PHT

MCLINTOCK 96H

EXPECTED PROGENY DIFFERENCES by BOLT

CE	Brth	Wean	Year	MCE	Milk	MWW	Stay	Doc
13.1	-0.5	62.0	96.7	6.8	20.0	50.9	16.9	9.6
CW	YG	Marb	REA	API	TI	GE EPDs	Disp	Score
16.6	-0.22	-0.09	0.58	\$109.5	\$60.6	no	n/a	

Anyone else like a baldy? This gal is young and made pretty nice. She is expected to calve early November to one of Taylor Farms' herdsires, PHT MCLINTOCK 96H (ASA 3988173). The service sire is a powerful 1682 son out of our now deceased 559R donor.



We think the combination of performance and power from 559R with D155's beautiful phenotype is a recipe to make a great one!



Miss WEF Calimocho

from Beech Mile Farm, Martin Farms Co-op

B/R NEW DAY 454

V A R RESERVE 1111

SANDPOINT BLACKBIRD 8809

SIMANGUS FEMALE

HC POWER DRIVE 88H

LMS MISS DEBBIE

MSR 4571P OF 1004L TWIST

Homozygous Black & Polled

ASA 3192406

Calved Oct. 17, 2016

Tattoo: D11Y / BE

PQS 100K

Ai to MF/BMF HILLJACK

#1 RightMate on 1/29;

Due Nov. 8, 2022

Ultrasound: BULL calf

RightMate
powered by TOP GENOMICS

EXPECTED PROGENY DIFFERENCES by BOLT

CE	Brth	Wean	Year	MCE	Milk	MWW	Stay	Doc
12.0	-0.3	57.5	99.9	4.6	22.5	51.2	13.9	12.6
CW	YG	Marb	REA	API	TI	GE EPDs	Disp	Score
27.2	-0.26	0.51	0.77	\$135.4	\$73.7	Y	2	

"Cali" was a good doing calf, posting weaning and yearling ratios of 101 and 104, respectively. She's maintained a 365-day calving interval, and her pedigree is crammed full of cow-making sires



and elite cows in both the Simmental and Angus breeds. A nice Eagle daughter sells as Lot 30. D11Y will calve soon after sale day with a herd bull prospect sired by MF/BMF HILLJACK.



Miss RSCC D48A

from Running Springs Cattle Co., Nolensville

HOOKS SHEAR FORCE 38K

HOOK'S BEACON 56B

HOOKS ZAFIRAH 41Z

3/4 SM 1/4 AN FEMALE

GIBBS 1084Y TUX & TAILS

MISS WEF PROM QUEEN A48

DAB 004 TRAVELER69

Homozygous Black & Polled

ASA 3255418

Calved Sept 3, 2016

Tattoo: D48A / LE

PQB 47K

Pasture bred to

MF/BMF HILLJACK

Estimated calving date

around 11/30/22.

EXPECTED PROGENY DIFFERENCES by BOLT

CE	Brth	Wean	Year	MCE	Milk	MWW	Stay	Doc
13.2	0.3	78.9	116.5	7.8	25.8	65.2	18.2	13.1
CW	YG	Marb	REA	API	TI	GE EPDs	Disp	Score
34.4	-0.32	0.34	1.12	\$140.8	\$81.4	Y	1	

D48A is a good Beacon daughter whose dam and grand dam were always two of the more dependable and productive cows in the herd. Extremely gentle attitudes run in this whole family!



D48A sells bred to MF/BMF HILLJACK and due end of Nov./first of December. She also has a daughter that made the group we pulled for the Lot 2 Pick Of The Pen fall yearling heifers.



This purebred cow is just entering the prime of her productive life. She is the dam of Lot 47, Miss THF Henrietta and produced a \$4,000 bred heifer through last year's sale selling to Chuck Woodward of GA. Sired by one of the most predictable and reliable sires in the breed,



Miss THF Emily

from Toy Hill Farm, Bon Aqua

HOOKS SHEAR FORCE 38K

HOOK'S BEACON 56B

HOOKS ZAFIRAH 41Z

PUREBRED FEMALE

MF BRASS TACKS

MF/THF CHICKADEE

MF WHIPPOORWILL

Homozygous Black & Polled

ASA 3442402

Calved Sept. 10, 2017

Tattoo: E8C / LE

PQB 47K

Ai to **ASR AMERICAN PROUD**

on 2/9/22; Due **Nov. 19, 2022**

Sex of calf UNKNOWN

RightMate
powered by TOP GENOMICS

EXPECTED PROGENY DIFFERENCES by BOLT

CE	Brth	Wean	Year	MCE	Milk	MWW	Stay	Doc
14.2	-0.4	74.6	112.9	9.8	23.6	60.8	20.1	15.2
CW	YG	Marb	REA	API	TI	GE EPDs	Disp	Score
31.8	-0.45	0.46	1.32	\$163.5	\$87.6	Y	1	

Hook's Beacon, she boasts 9 EPDs in the top 20% of the breed. She has performed well in our program and we're confident she will do the same in yours! Emily E8C was Ai bred February 9 and sells safe in calf to ASR American Proud due November 19.



Miss THF Fergie

from Toy Hill Farm, Bon Aqua

COLEMAN CHARLO 0256

S A V RAINDANCE 6848

S A V BLACKCAP MAY 4136

SIMANGUS FEMALE

3C SOUTHBOUND W9350

MF WHIPPOORWILL

LADY JUNE U8

Homozygous Black & Polled

ASA 3559699

Calved Sept. 24, 2018

Tattoo: F8Z / LE

PQB 100K

Pasture bred to **MF JUDGMENT**

Due to calve **Jan. 17, 2023**

Ultrasound: **HEIFER** calf

EXPECTED PROGENY DIFFERENCES by BOLT

CE	Brth	Wean	Year	MCE	Milk	MWW	Stay	Doc
14.4	-0.4	75.9	116.6	9.1	27.0	64.9	16.6	10.3
CW	YG	Marb	REA	API	TI	GE EPDs	Disp	Score
36.1	-0.25	0.36	0.91	\$151.0	\$85.3	Y	1	

This Raindance daughter was an impressive young female with extra growth and extreme depth and volume. We appreciate her even more now because she transmits those traits to her calves. With a YEAR EPD of 148.4 and a WEAN EPD of 86.6, her calves will impress you as well. She is safe in calf with a heifer calf sired by MF Judgment and due 1/17/2023.



Miss RSCC Susan Storm G5D

from Running Springs Cattle Co., Nolensville

TJ MAIN EVENT 503B

CDI MAINLINE 265D

HOOK'S BEYONCE 82B

5/8 SM 3/8 AN FEMALE

B C LOOKOUT 7024

MISS RSCC REBECCA D5U

NB DREAMBOAT ANNE 5U

Heterozygous Black,

Homozygous Polled

ASA 3708422

Calved Aug. 25, 2019

Tattoo: G5D / RE

PQB 100K

Safe in calf to **HA JUSTICE**

Due to calve **Jan. 20, 2023**

Ultrasound: **BULL** calf

EXPECTED PROGENY DIFFERENCES by BOLT

CE	Brth	Wean	Year	MCE	Milk	MWW	Stay	Doc
13.1	1.5	74.2	117.8	5.5	23.8	60.8	17.2	16.8
CW	YG	Marb	REA	API	TI	GE EPDs	Disp	Score
41.0	-0.28	-0.03	0.77	\$115.9	\$68.1	Y	n/a	

This Mainline daughter is out of a maternal sister to NB Regina, the dam of Lots 12A and B and Lot 58, who has been a donor for Martin Farms & Williams Brothers. You can pick out the females in this family because they have a little extra look and often a little white in their face. G5D is safe in calf with one of the first babies by Justice!



The RSCC crew at the 2020 Seedstock Connection Sale at Water's Edge Farm.



MF Graceland

from Martin Farms, Lyles

CCR COWBOY CUT 5048Z

TJ COWBOY UP 529B

TJ MS 46W

3/4 SM 1/4 AN FEMALE

HOOK'S BEACON 56B

MF ECLIPSE E81Y

MF YAKIRA Y881

RightMate
powered by TOP GENOMICS

EXPECTED PROGENY DIFFERENCES by BOLT

CE	Brth	Wean	Year	MCE	Milk	MWW	Stay	Doc
12.0	0.3	80.3	121.1	10.3	25.1	65.2	23.1	14.0
CW	YG	Marb	REA	API	TI	GE EPDs	Disp	Score
42.1	-0.25	0.52	0.85	\$159.3	\$86.1	Y	n/a	

Graceland is a RightScore 5 G+ ATM female with an EPD profile boasting 12 numbers inside the top 35% and no projection below the 60th percentile. That's balance! At the top of the list is a top 1% rank for Stayability, and that says she's a money maker, y'all.

Homozygous Black & Polled

ASA 3535717

Calved Jan. 4, 2019

Tattoo: G81E / RE

PQB 100K

Exposed 4/21 until 6/15

to MF/BMF HILLJACK

Due around Feb. 11, 2023

Ultrasound: HEIFER calf



Representing one of the most proven and dependable cow families at Martin Farms, G81E has earned a 359-day calving interval and a weaning ratio of 102, and she'll have a nice bull calf by Essential in the Lot 87 Pick of the Bull Calf Crop. She's carrying a Hilljack heifer!



MF Abbey Road

from Martin Farms, Lyles

W/C UNITED 956Y

MR NLC AVENUE 3088A

MS NLC OLIE T7813 B

PUREBRED FEMALE

HC POWER DRIVE 88H

PRS CHARM W208

SVF NJC EBONYS CHARM R29

RightMate
powered by TOP GENOMICS

EXPECTED PROGENY DIFFERENCES by BOLT

CE	Brth	Wean	Year	MCE	Milk	MWW	Stay	Doc
13.8	0.4	78.4	126.1	7.7	28.2	67.3	14.6	14.9
CW	YG	Marb	REA	API	TI	GE EPDs	Disp	Score
43.5	-0.36	0.10	0.98	\$133.2	\$80.4	Y	1	

Abbey Road is a high performance female that posted a weaning ratio of 107 as a calf and has backed that up, earning a maternal weaning ratio of 107 and a yearling ratio of 109 on three calves. She has produced two sons, both of which were used in our own program as promising yearlings, and her dam by the immortal HC Power Drive, is still getting the job done at 13 years of age.

Homozygous Black & Polled

Calved

Tattoo: D208 / LE

ASA 3192529

PQB 47K

Exposed 4/21 until 6/15

to MF/BMF HILLJACK

Due around Feb. 9, 2023

Ultrasound: BULL calf



Backed by the Ebony Antoinette cow family, Abbey is the real deal. I thought we'd get around to flushing this cow before she left us; we haven't NOT done that for lack of confidence in her. I think she's good enough to flush. And if you're remotely interested in raising yourself a herd bull, she'll be toting a Hilljack bull calf on sale day that would make an excellent candidate!

COMMERCIAL BRED COWS from Beech Mile Farm, Martin Farms Co-op



Tag / Herd ID: #21

Age: 6 years (2016)

ASA (3590908)

Genomic: 100K DP2

Tag / Herd ID: #12

Age: 9 years (2013)

ASA (3590902)

Genomic: 100K DP2

AMF, CAF, NHF, THF, PHAF, DLF, DDF, OSF



Seedstock
CONNECTION
86B

Lots 86A & 86B sell pasture exposed from 2/5 until 3/13/22 and confirmed 4 to 4 1/2 months safe in calf July 14. They should calve very close together in early December to MF JAMBEAU J34F (3855401), a star-faced son of Guardian (his EPDs below). Both cows have a genomic profile & negative results for DP2 (DEFECTS PANEL) on file with ASA.

CE	Brth	Wean	Year	MCE	Milk	MWW	Stay	Doc	CW	YG	Marb	REA	API	TI
11.3	3.5	104.6	164.1	6.9	27.4	79.7	22.3	12.9	57.4	-0.26	0.79	0.98	\$187.2	\$108.6
45%		1%	1%	30%	25%	2%	3%	35%	1%		1%	30%	1%	1%



KEYNOTE



KINGFISHER



KEYSTONE



KUSH



KINGPIN



KLONDIKE



KOMODO

87 Pick of the Bull Calf Crop

from Martin Farms, Lyles

We're not convinced a perfect one will ever exist, so making a perfect one isn't really the goal. Our job is to improve each generation. We try to make every bull genetically predictable,

relevant to industry demands, and user friendly. We hope you'll consider Martin Farms when you think about a reliable source of seedstock genetics. We appreciate your interest in our program, and we invite your questions or your visit to see our operation any time.

PERFORMANCE				MATERNAL					CARCASS				\$ VALUES	
CALF'S NAME				SIRE'S NAME x MGS					ASA Brd Code				ASA REG	
CE	BW	WW	YW	MCE	MM	MWW	STAY	DOC	CW	YG	MB	REA	API	TI
%	%	%	%	%	%	%	%	%	%	%	%	%	%	%
MF/BMF KUSH K74F				TJ STONE COLD x S A V RAINDANCE					1/2 SM 1/2 AN				4024344	
17.4	-1.1	87.4	136.2	7.6	23.9	67.6	16.1	17.0	45.7	-0.09	0.30	0.65	145.5	86.7
10	25	15	15	35	40	20	45	5	15	90	55	55	25	20
MF KOMODO K64F				MF/BMF HILLJACK H13F x PAYWEIGHT 1682					3/4 SM 1/4 AN				4027518	
15.9	-1.7	80.2	124.9	10.7	30.4	70.4	22.6	16.2	44.9	-0.26	0.42	0.95	162.5	87.410
15	20	35	35	5	10	15	2	10	15	45	35	10	10	20
MF/BMF KEYNOTE K09H				GW TRIPLE CROWN x MAINLINE					3/4 SM 1/4 AN				4024350	
13.0	0.0	87.8	140.3	8.8	23.8	67.6	18.9	17.1	46.0	-0.41	0.51	1.14	157.9	92.2
40	45	15	10	20	40	20	15	5	15	10	20	2	15	10
MF KINGFISHER K9E				HOOK'S EAGLE x HOOK'S BEACON					PUREBRED				4027516	
14.7	-2.2	89.0	135.6	9.1	20.8	65.2	19.8	15.8	38.5	-0.46	0.46	1.36	172.8	98.4
10	4	15	15	10	75	35	20	10	20	30	10	1	3	3
MF KEYSTONE K81G				GIBBS ESSENTIAL x TJ COWBOY UP					PUREBRED				4027514	
14.0	-0.8	90.3	141.6	10.6	24.6	69.8	20.5	18.5	49.5	-0.26	0.48	1.02	172.2	97.6
15	15	15	10	2	40	20	10	1	4	99	5	25	3	3
MF KINGPIN K89E				SR HIGHLIFE x HOOK'S BEACON					PUREBRED				4027534	
12.4	0.9	90.6	136.1	6.9	26.8	72.1	19.0	8.2	32.6	-0.41	0.44	0.94	161.7	95.1
30	40	15	15	30	25	15	25	90	35	55	10	35	10	5 MF
KLONDIKE K81E				TJ STONE COLD x HOOK'S BEACON					5/8 SM 3/8 AN				4027525	
15.8	-2.2	80.1	122.6	8.9	27.8	67.8	19.1	14.7	31.3	-0.28	0.41	0.88	155.2	87.4
15	15	35	40	20	15	20	15	20	50	40	35	20	15	20



MF Jackpot J46E

from Martin Farms, Lyles

TJ MAIN EVENT 503B

TJ TEARDROP 783F

TJ MS 38W

3/4 SM 1/4 AN BULL

CCR COWBOY CUT 5048Z

MF/KOM SWEET PEA

MF COCONUT

Homozygous Black

Homozygous Polled

ASA 3855399

Calved Jan. 3, 2021

Tattoo: J46E / RE

Genomic: PQB 100K



EXPECTED PROGENY DIFFERENCES by BOLT

CE	Brth	Wean	Year	MCE	Milk	MWW	Stay	Doc
12.7	0.2	84.6	125.0	7.0	30.7	72.9	24.1	16.1
45%	50%	20%	35%	45%	5%	10%	1%	10%
CW	YG	Marb	REA	API	TI	GE EPDs	Disp	Score
19.3	-0.15	0.12	0.45	\$141.4	\$79.1	Y	1	
				35%	50%			

This bull's donor dam and two flush mates lead off last year's sale as our Lot 1, 1A, and 1B. A full sister heifer calf was selected by savvy young cowboy, Gatlin Gulish of Puryear, for \$4,000 with a Kenneth Ambrose Heifer Scholarship; their dam, MF/KOM Sweet Pea, was selected by Todd Jones in IN to upgrade his good cow herd; and brother Jedi is working for Butch Freeman Farms in AL to increase weaning weights and add muscle to feeder calves.

MF Jackpot is a homozygous black and polled baldy bull that rings the bell with a RightChoice score of 5 G+ and stacks the maternal pedigrees of MF Vanilla Bean and TJ Miss 38W. The longer you study a bull like Jackpot, the more you appreciate his skeletal soundness and agility, his smooth pattern and clean lines, and his laid back, gentle attitude that makes it really hard not to like him. His EPDs predict he'll be a versatile sire that can be used safely and successfully in different breeding scenarios. We all appreciate moderate birth weights and quick growth through weaning time, but where Jackpot will really shine is in the daughters that go back into the herd. If you like females that mature quickly and don't keep getting bigger and bigger, that are docile and easy to work or be around, that give plenty of milk without sacrificing more body condition than they can afford, and that stay in the herd and save you the cost of replacing a young cow, you've just hit the jackpot!



Whether you're running registered seedstock or commercial cross-bred cows, if you realize the value of making replacement females that improve your cow herd in every way, then you have a good idea of what this bull will turn out to be worth down the road.



MF/Smith Honor Roll H463

from Martin Farms, Lyles

TJ MAIN EVENT 503B

CDI TRAIL BOSS 281E

CDI MS MILESTONE 35W

PUREBRED BULL

3C SOUTHBOUND W9350

MF KATYDID

MF EXACTLY

Homozygous Black

Homozygous Polled

ASA 3815719

Calved Sept. 13, 2020

Tattoo: H463 / RE

Genomic: PQD 100K



EXPECTED PROGENY DIFFERENCES by BOLT

CE	Brth	Wean	Year	MCE	Milk	MWW	Stay	Doc
10.0	0.4	63.8	96.9	5.2	27.2	59.1	22.5	9.4
CW	YG	Marb	REA	API	TI	GE EPDs	Disp	Score
28.1	-0.45	0.05	1.09	\$134.8	\$69.7	Y	1	

Lot 89 is a stout made, heavy muscled grandson of Main Event. He's homozygous black and homozygous polled, meaning he won't produce a red or horned calf. The cow family traces back to the Triple C Sweetheart cow which came into our program

when Chris bought a set of embryos at the North American sired by HC Power Drive. This bull should work to add shape and muscle expression to a set of feeder calves. He's ready for some work and needs a good set of commercial cows!

Every ending is a new beginning.



Dear Friends,

We have spent the last fifteen years attempting to build a cow herd that would make anyone proud. We've thoroughly enjoyed the excitement that comes with every new calf crop after months or even years of planning them, and like you, we've suffered the heartbreaks that are part of the cattle business. The relationships with people we've met along the way, farmers and ranchers we consider our kind of people, are the most meaningful. Our lives have been blessed by people who are kind and family-oriented and who put in a hard day's work to earn an honest living and still look for what they can do for others. To have been on this journey has been a privilege and a pleasure, and one we hope to continue in the future.

In the meantime, however, we've made the tough decision to disperse the herd that's taken us these fifteen years to build. I personally want to thank everyone who has supported the Water's Edge program. We appreciate your confidence in the genetics we supplied, and we are humbled that you put your trust in the WEF brand as a partner in your business. I also want to thank anyone who has shown interest in this final offering. This group represents everything we have invested in this venture, not only financially, but physically and emotionally as well. We wish you luck and great success with them!

We look forward to seeing you at the sale, and please don't hesitate if you have any questions or need any assistance whatsoever.

Yours truly,

Samuel Lynch



ANGUS HERD BULL

The Bull

W E F Bayonet 9A29

PATERNAL GRANDAM, ISABEL Y69



MATERNAL GRANDAM, 4136



W E F Bayonet 9A29

from Water's Edge Farm, Franklin

Baldrige Xpand X743

Baldrige Colonel C251

Baldrige Isabel Y69

Angus Herd Sire

S A V Registry 2831

S A V Blackcap May 4557

S A V Blackcap May 4136

Calved Feb. 1, 2019

Tattoo: 9A29 / BE

AAA +*19781422

AngusGS GE

Black & Polled

+ Embryo Transplant *Parents Qualified



Production								Maternal				Management				Carcass				\$Values				
CED	BW	WW	YW	RADG	DMI	YH	SC	HP	CEM	Milk	MW	MH	Doc	Claw	Angle	HS	CW	Marb	RE	Fat	\$M	\$W	\$B	\$C
+2	+1.3	+67	+122	+28	+1.24	+5	+78	+13.1	+7	+29	+99	+5	+26	+53	+52	+42	+58	+39	+95	-.027	+49	+62	+148	+241
	55%	35%	30%	25%				40%		30%	15%	40%	15%			30%	25%		10%	10%		35%	35%	50%

Bayonet 9A29 is a big, stout, 3 1/2-year-old herd sire suited for the most discriminating commercial cow/calf operation or registered seedstock Angus breeder alike. Gentle and easy to manage. No issues. Here's an athletic breeding bull, and he's conditioned for heavy and immediate use. This is the kind of Angus bull that can plug into a lot of breeding scenarios and do a lot of things right. And we haven't even mentioned the pedigree yet!

No doubt there will be a lot of Angus bulls for sale this fall. How many of them will have two of the most prominent Angus cows on the planet in the first two generations of his pedigree? We're thinking that will be a much lower number!

9A29 is a grandson of both S A V Blackcap May 4136 and Baldrige Isabel Y69. If you're raising females, whether they're registered purebred Angus, registerable hybrids through another breed association, or crossbred commercial heifers for your own replacements, think about the females you could make by adding the influence of 4136 and Y69 in one generation. That could be as easy as opening a gate and turning your new bull out next breeding season!

There isn't any telling how many direct sons of 4136 and Y69 have been used extensively through Ai around the globe. You have an opportunity September 24 to add those genetics to your next calf crop!



DEER VALLEY GROWTH FUND
SIRE OF LOT 91B EMBRYOS & LOT 92 PREGNANCY



S A V Blackcap May 6605

from Water's Edge Farm, Franklin

O C C PAXTON 730P

COLEMAN CHARLO 0256

BOHI ABIGALE 6014

ANGUS DONOR

S A F 598 BANDO 5175

S A V MAY 2397

S A V MAY 7238

AAA 18531349

Calved Jan. 2, 2016

Tattoo: 6605 / BE

Parentage: SNP

Genomic: Angus GS Prog: 8

Pregnancy status
available sale day

AAA EXPECTED PROGENY DIFFERENCES

Production								Maternal				
CED	BW	WW	YW	RADG	DMI	YH	SC	HP	CEM	Milk	MW	MH
+4	+2.0	+75	+127	+24	+1.42	+3	+1.33	+4.2	+4	+32	+68	-1
Management				Carcass				\$Values				
Doc	Claw	Angle	HS	CW	Marb	RE	Fat	\$M	\$W	\$B	\$C	
+10	+4.1	+4.6	+0.1	+51	+35	+58	+0.62	+50	+77	+118	+203	

Not very often does one this special come along. We made our fourth trip in four years to Kelly Schaff's sale in 2017, and Chris found this female to be what he considered the most complete, fault-free heifer we'd seen there in all four years. That's about 800 females with an SAV prefix! Now consider her pedigree and the fact that 6605 is a maternal sister to the most influential cow in the Angus breed, 4136, and a half sister to Raindance, Rainfall, and President from the same cow family, and there's no question she has the potential to be a total game changer! We've seen enough to know 6605 has the "it" factor. Top 5% WW; top 10% YW and PAP; top 15% SC, Milk, and Claw; and top 1% for hair shedding. Y'all, 6605 never missed a beat when we brought her to Tennessee. She's happy anywhere. Beautiful in her design. Quiet-natured and easy to handle. Iconic cow family. It's an understatement to say it will be difficult to see this one leave.



W E F Blackcap May 2605

ANGUS HEIFER CALF

from Water's Edge Farm, Franklin

BALDRIDGE BEAST MODE

SIRE: W E F BEAR CLAW 8179

YON BURGESS X179



AAA 20349009

Calved Jan. 29, 2022

Tattoo: 2605 / BE

SNP Angus GS



Three #1 Embryos 6605 X Growth Fund

from Water's Edge Farm, Franklin

BASIN PAYWEIGHT 1682

DEER VALLEY GROWTH FUND

DEER VALLEY RITA 36113

ANGUS EMBRYOS

COLEMAN CHARLO 0256

S A V BLACKCAP MAY 6605

S A V MAY 2397

3 GRADE 1 IVF EMBRYOS

UNSEXED

Guarantee 1 pregnancy
if work is done by IVF-
certified embryologist.

BLACKCAP MAY 6605

Blackcap May cow family



Heifer Calf Pregnancy 6605 X Growth Fund

ANGUS HEIFER CALF PREGNANCY

from Water's Edge Farm, Franklin

BASIN PAYWEIGHT 1682

DEER VALLEY GROWTH FUND

DEER VALLEY RITA 36113

ANGUS HEIFER PREGNANCY

COLEMAN CHARLO 0256

S A V BLACKCAP MAY 6605

S A V MAY 2397

Angus Heifer Pregnancy

Due Mar. 5, 2023

Registered 7-year-old

Simmental Recipient

ASA 3032817

Tattoo/ID: C728



POLLED, BLACK SIMANGUS HEIFER CALF
from Water's Edge Farm, Franklin

W E F BEAR CLAW 8179

3/8 SM 5/8 AN HEIFER CALF

MISS WEF HIGHFALUTIN

ASA (4026428)

Calved Mar. 19, 2022

Tattoo: K728 / BE



BLACKCAP MAY 6648

Direct daughter of Angus breed icon 4136

Blackcap May 6648



Selling a direct daughter of the most influential cow in the Angus breed, S A V Blackcap May 4136!



S A V Blackcap May 6648

from Water's Edge Farm, Franklin

S A V BISMARCK 5682

S A V WEST RIVER 2066

S A V EMBLYNETTE 0491

ANGUS FEMALE

S A V 8180 TRAVELER 004

S A V BLACKCAP MAY 4136

S A V MAY 2397

AAA+*18542159

Calved Jan. 2, 2016

Tattoo: 6648 / BE

SNP Angus GS 3

Black, Polled

AAA EXPECTED PROGENY DIFFERENCES

Production								Maternal					
CED	BW	WW	YW	RADG	DMI	YH	SC	HP	CEM	Milk	MW	MH	
+1	+1.9	+62	+109	+26	+74	+2	+1.28	+11.9	+6	+22	+68	+2	
Management				Carcass				\$Values					
Doc	Claw	Angle	HS	CW	Marb	RF	Fat	\$M	\$W	\$B	\$C		
+23	+47	+53	+78	+36	-14	+87	-009	+56	+56	+99	+184		



S A V Blackcap May 6648 is a direct daughter of Blackcap May 4136, the all-time high-income producing cow at Schaff Angus Valley and likely the most influential cow in the Angus breed with over \$10 million in direct progeny sales. 4136 was a genetic machine, placing more sons in Ai studs around the globe than we dare try to list in the time and space we have. Her ET sons by Coleman Charlo were the buzz of the breed before and after the 2017 Schaff Angus Valley sale where the first four bulls through the ring commanded more than \$400,000 each! Several of those flush brothers--S A V Rainfall, S A V President, S A V Raindance, S A V Governor, and S A V Reign--all found their rightful place among heavy-use sires in prominent Angus programs across the country. Other 4136 sons include S A V Resource, S A V Renown, S A V Recharge, S A V Sensation, S A V Seedstock...the list goes on and on and on.

Any direct daughter of Blackcap May 4136 is a valuable asset to any breeding program utilizing Angus genetics. Blackcap May 6648 was Ai bred May 26 and has been confirmed safe in calf to Deer Valley Growth Fund and due to calve March 5, 2023.

This sale will be broadcast live on the internet.

DVAuction
Broadcasting Real-Time Auctions
Real time bidding & proxy bidding available.



S A V Blackcap May 6605 8002

from Water's Edge Farm, Franklin

COLEMAN CHARLO 0256

S A V RAINDANCE 6848

S A V BLACKCAP MAY 4136

ANGUS FEMALE

COLEMAN CHARLO 0256

S A V BLACKCAP MAY 6605

S A V MAY 2397

AAA+*19509695

Calved May 31, 2018

Tattoo: 8002 / BE

SNP Angus GS 2

Black, Polled

Ai 1/9 to SITZ STELLAR

Heifer calf due 10/19/22

AAA EXPECTED PROGENY DIFFERENCES

Production								Maternal				
CED	BW	WW	YW	RADG	DMI	YH	SC	HP	CEM	Milk	MW	MH
+6	+1.8	+74	+144	+34	+1.67	+6	+1.51	+5.7	+8	+31	+103	+6
Management				Carcass				\$Values				
Doc	Claw	Angle	HS	CW	Marb	RE	Fat	\$M	\$W	\$B	\$C	
+0	+65	+59	+10	+72	-.01	+63	+0.33	+22	+67	+146	+211	

The first time we flushed 6605, the matings on the two IVF donors were inadvertently swapped by someone in the chain of command, and that created 8002 and her one full sister. We knew there was potential for disaster or greatness, and when we saw 8002's genomic profile and the affect it had on her EPDs, we got a little bit excited!



This direct daughter of 6605 is linebred to 2397, the dam of 4136. She stands among the top 1 or 2% of the breed for YW, RADG, HS, CW, and \$F. With breed average predictions for CED and BW and top 10% WW and top 20% milk, she's a real cowboy's kind of cow. Her heifer calf by Sitz Stellar due in October will be a keeper!



S A V Blackcap May 6605 8007

from Water's Edge Farm, Franklin

S A V REGISTRY 2831

S A V SENSATION 5615

S A V BLACKCAP MAY 4136

ANGUS FEMALE

COLEMAN CHARLO 0256

S A V BLACKCAP MAY 6605

S A V MAY 2397

AAA+*19509642

Calved June 14, 2018

Tattoo: 8007 / BE

SNP Angus GS 2

Black, Polled

Pasture bred to W E F
BAYONET 9A29 due to
calve early December

AAA EXPECTED PROGENY DIFFERENCES

Production								Maternal				
CED	BW	WW	YW	RADG	DMI	YH	SC	HP	CEM	Milk	MW	MH
+1	+2.0	+66	+116	+23	+1.21	+0	+1.43	+10.4	+0	+21	+75	-.1
Management				Carcass				\$Values				
Doc	Claw	Angle	HS	CW	Marb	RE	Fat	\$M	\$W	\$B	\$C	
+23	+37	+51	+38	+38	+10	+77	-.006	+53	+56	+107	+192	

8007 was always one of the phenotypic standouts from the first class of IVF heifers we produced from 6605 and 5812. Her first calf, a heifer by SITZ ACCOMPLISHMENT, was Chris' favorite in a good group of bred heifers picked out by Bill Dickerson earlier this year.



8007 is also line bred to the dam of 4136, S A V May 2397, through her dam, 6605, and her sire Sensation, a direct son of 4136. Only this time that was on purpose! We believe in stacking pedigrees to great females, and 2397 is a great one in our book!



S A V Blackcap May 4557 8716

from Water's Edge Farm, Franklin

S A V RENOWN 3439

S A V MORTON COUNTY 5010

S A V ABIGALE 1146

ANGUS FEMALE

S A V REGISTRY 2831

S A V BLACKCAP MAY 4557

S A V BLACKCAP MAY 4136

AAA+*19713129

Calved Sept. 9, 2018

Tattoo: 8716 / BE

SNP Angus GS 1

Black, Polled

Pasture Exposed. Status
available sale day.

AAA EXPECTED PROGENY DIFFERENCES

Production								Maternal				
CED	BW	WW	YW	RADG	DMI	YH	SC	HP	CEM	Milk	MW	MH
-6	+4.6	+74	+129	+28	+1.07	+2	+33	+7.5	+1	+13	+114	-.4
Management				Carcass				\$Values				
Doc	Claw	Angle	HS	CW	Marb	RE	Fat	\$M	\$W	\$B	\$C	
+30	+29	+38	+42	+57	-.18	+99	-.012	+34	+42	+127	+199	

8716's dam was another direct daughter of 4136. She is a maternal sister to the Lot 90 herd sire, W E F Bayonet.



She'll sell with a heifer calf at her side and pasture exposed to the SQUARE B ATLANTIS son, W E F ATLAS 1327.

MADAME PRIDE 5812

Madame Pride cow family



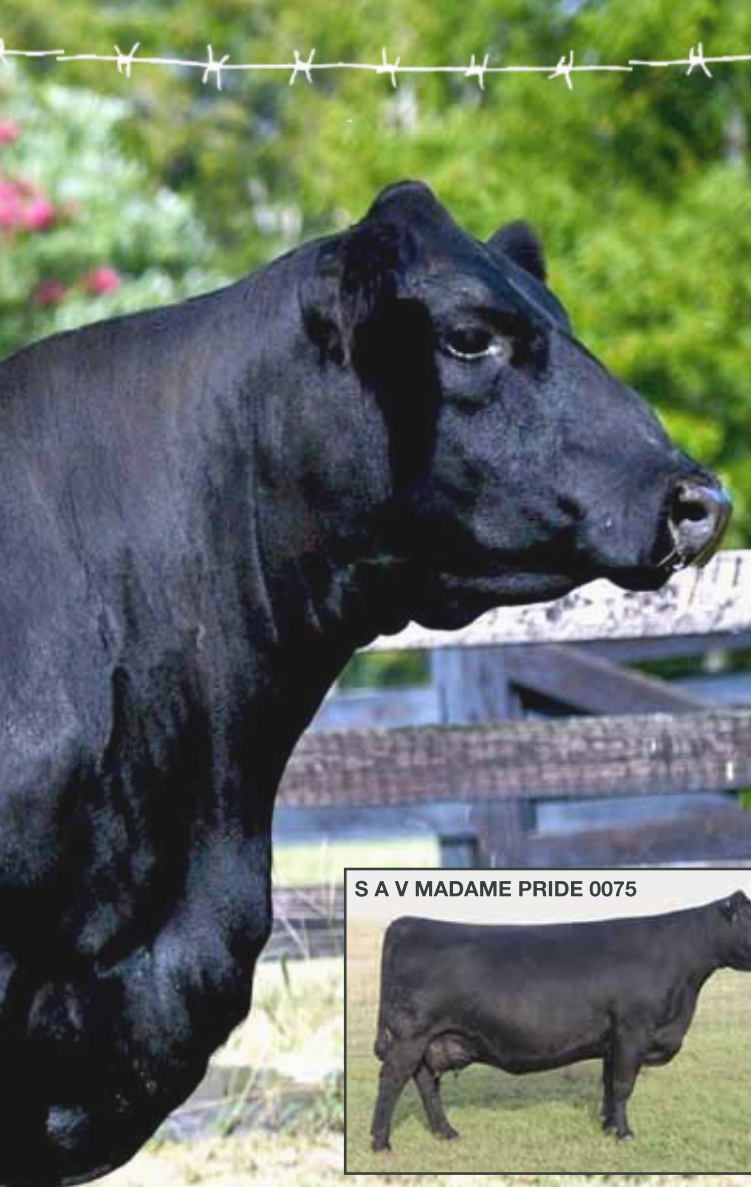
W E F MADAME PRIDE 5812 7Y12
MADAME PRIDE 5812 x BENNETT FORTRESS
Sold for \$10,000 on the
2017 Open House at the Farm



WEF GMC MADAME PRIDE 8108
MADAME PRIDE 5812 x S A V RAINDANCE
Sold for \$4,000 on the 2019 GMC Angus Sale
Owned by Montana Ranch, Montana



W E F MADAME PRIDE 9812
MADAME PRIDE 5812 x BALDRIDGE BEAST MODE
Sold for \$4,700 on the 2020 Seedstock Connection Sale
Owned by Martin Farms, Tennessee



S A V MADAME PRIDE 0075



ENHANCE



JET BLACK



FORTRESS



BEAST MODE



Madame Pride 5812 Embryos

from Water's Edge Farm, Franklin

Guarantee 1 pregnancy on each set of 3 embryos
if work is performed by an IVF-certified embryologist.

97A S A V Madame Pride 5812 x SydGen Enhance

97B S A V Madame Pride 5812 x Bar R Jet Black 5063

97C S A V Madame Pride 5812 x K C F Bennett Fortress

97D S A V Madame Pride 5812 x Baldrige Beast Mode B074



DEER VALLEY GROWTH FUND | SERVICE SIRE OF LOT 97



S A V Madame Pride 5812

from Water's Edge Farm, Franklin

S A V HARVESTOR 0338

S A V INTERNATIONAL 2020

S A V EMBLYNETTE 5483

ANGUS DONOR

S A F 598 BANDO 5175

S A V MADAME PRIDE 0075

S A V MADAME PRIDE 8264

AAA+*18204615

Calved Jan. 9, 2015

Tattoo: 5812 / BE

Parentage: SNP

Genomic: HD50K Prog: 16

Ai'd 1/8 to DEER VALLEY
GROWTH FUND and con-
firmed safe to that date.

Bull calf due Oct. 18, 2022

AAA EXPECTED PROGENY DIFFERENCES

Production								Maternal			
CED	BW	WW	YW	RADG	DMI	YH	SC	HP	CEM	Milk	MW MH
+6	+2.5	+53	+97	+23	+68	+3	+1.75	+11.3	+4	+25	+53 +2
Management				Carcass				\$Values			
Doc	Claw	Angle	HS	CW	Marb	RE	Fat	\$M	\$W	\$B	\$C
+16	+.51	+.47	+1.02	+44	+0.05	+.33	+.028	+52	+46	+115	+201

If you've ever had many dealings in real estate, you know the three rules to live by. That's where we came up with the three most important things to consider when you're buying a future donor... Cow family! Cow family! Cow family!

Madame Pride 5812 is one example. 5812 is an own daughter of the immortal Madame Pride 0075, the second high income producing cow in Schaff Angus Valley history. The last single embryo produced by 0075 shortly before her death at age 17 now holds the world record high sale price at \$1.51 million... That bull would be S A V America. We're convinced Madame Pride 0075 is the real deal, and that's why 5812 was our \$35,000 pick from the 2016 Schaff Angus Valley Sale. Full sisters headline other prominent breeding programs, including Ingram Angus.

5812 has worked very well in transplant, producing 60+ oocytes on her last two IVF flushes. She's a fertile and productive brood cow that's physically imposing with extra body length and sound, problem-free feet and udder. If you're looking for a proven Angus donor with the genetic puzzle pieces to lift your breeding program to the next level, there's a good chance you just found her. Daughters by S A V Sensation, S A V Raindance, Bennett Fortress, and W E F Sin City also sell. Her bull calf by Growth Fund could more than pay for her!



0812 is an intriguing female that combines WEF breeding principles and the three power cow families at Schaff Angus Valley--Madame Pride, Blackcap May, and Emblynette. Look closer and you'll see her pedigree stacks 0075, 4136, 2397, and Emblynette 5483, the powerful dam of International, all in the first three generations!



Madame Pride 9996 is an ET daughter of the 5812 donor. She's an especially easy keeping, broody young female with numbers that highlight her maternal influence, inside the top 25% for CED, BW, DMI, SC, Milk, and \$EN.



We hung on to 8106 from a group of six flush sisters because she was the most moderate, the deepest, easiest keeping, the earliest maturing, and the quietest to handle. She's a genetic jewel with her two grand dams being two of the most valuable Angus cows ever!



W E F Madame Pride 0812

from Water's Edge Farm, Franklin

S A V SENSATION 5615

W E F SIN CITY 8005

S A V BLACKCAP MAY 6605

ANGUS FEMALE

S A V INTERNATIONAL 2020

S A V MADAME PRIDE 5812

S A V MADAME PRIDE 0075

AAA EXPECTED PROGENY DIFFERENCES

Production								Maternal			
CED	BW	WW	YW	RADG	DMI	YH	SC	HP	CEM	Milk	MW
+8	+1.3	+54	+92	+19	+89	+0	+16	+11.1	+2	+16	+45
Management				Carcass				\$Values			
Doc	Claw	Angle	HS	CW	Marb	RE	Fat	\$M	\$W	\$B	\$C
+8	+43	+35	+69	+29	+0.1	+65	+0.17	+52	+43	+95	+175

AAA *19886022

Calved Nov. 5, 2020

Tattoo: 0812 / BE

SNP Angus GS

Ai 1/8 to GAR HOME TOWN

Bull calf due 10/18/22



W E F Madame Pride 5812 9996

from Water's Edge Farm, Franklin

CONNEALY CONSENSUS

K C F BENNETT FORTRESS

THOMAS PATRICIA 9705

ANGUS FEMALE

S A V INTERNATIONAL 2020

S A V MADAME PRIDE 5812

S A V MADAME PRIDE 0075

AAA EXPECTED PROGENY DIFFERENCES

Production								Maternal			
CED	BW	WW	YW	RADG	DMI	YH	SC	HP	CEM	Milk	MW
+12	+0	+51	+91	+22	+39	+3	+1.69	+10.6	+8	+31	+19
Management				Carcass				\$Values			
Doc	Claw	Angle	HS	CW	Marb	RE	Fat	\$M	\$W	\$B	\$C
+11	+58	+54	+91	+30	+56	+37	+0.16	+62	+60	+121	+219

AAA+*19649325

Calved Sept. 22, 2019

Tattoo: 9996 / BE

SNP Angus GS

Ai'd 12/30/21 to HIEKEN BROADVIEW; Ultrasounded with a Bull calf due on or around Oct. 18, 2023.



S A V Madame Pride 5812 8106

from Water's Edge Farm, Franklin

COLEMAN CHARLO 0256

S A V RAINDANCE 6848

S A V BLACKCAP MAY 4136

ANGUS FEMALE

S A V INTERNATIONAL 2020

S A V MADAME PRIDE 5812

S A V MADAME PRIDE 0075

AAA EXPECTED PROGENY DIFFERENCES

Production								Maternal			
CED	BW	WW	YW	RADG	DMI	YH	SC	HP	CEM	Milk	MW
+7	+2.3	+65	+117	+26	+1.06	+1	+42	+11.6	+7	+18	+80
Management				Carcass				\$Values			
Doc	Claw	Angle	HS	CW	Marb	RE	Fat	\$M	\$W	\$B	\$C
+13	+63	+53	+92	+47	+0.3	+73	-.014	+43	+50	+118	+196

AAA+*19509706

Calved June 8, 2018

Tattoo: 8106 / BE

SNP Angus GS

Genomic progeny: 2

Pasture bred to W E F BAYONET 9A29 due to calve early December

She's safe in calf to the Baldrige Colonel son, W E F Bayonet 9A29 that sells as Lot 90.



W E F Madame Pride 5812 8104

from Water's Edge Farm, Franklin

S A V REGISTRY 2831

S A V SENSATION 5615

S A V BLACKCAP MAY 4136

ANGUS FEMALE

S A V INTERNATIONAL 2020

S A V MADAME PRIDE 5812

S A V MADAME PRIDE 0075

AAA EXPECTED PROGENY DIFFERENCES

Production								Maternal						
CED	BW	WW	YW	RADG	DMI	YH	SC	HP	CEM	Milk	MW	MH		
+7	+5	+51	+105	+27	+91	+5	+1.44	+13.6	+5	+28	+76	+5		
Management				Carcass				\$Values						
Doc	Claw	Angle	HS	CW	Marb	RE	Fat	\$M	\$W	\$B	\$C			
+28	+51	+54	+89	+35	-06	+22	+0.02	+49	+46	+99	+177			

8104 is developing into a beautiful young cow with "the look" of one that could make a big impact. Her 2021 bull weaned at the top of his group, and she's bred back the same way, carrying a heifer calf this time by DEER VALLEY GROWTH FUND.

AAA+*19503450

Calved June 3, 2018

Tattoo: 8104 / BE

SNP Angus GS

Genomic progeny: 2

Ai 1/8 to GROWTH FUND

Heifer calf due 10/19/22



8104 is one of my two picks for best young female that is poised to make her mark. Don't say I didn't tell you if you watch her go by and then she does something huge! She'll be worth what she brings.



S A V Madame Pride 5401

from Water's Edge Farm, Franklin

S A V HERITAGE 6295

S A V HARVESTOR 0338

S A V EMBLYNETTE 7749

ANGUS FEMALE

S A V 004 DENSITY 4336

S A V MADAME PRIDE 0244

S A V MADAME PRIDE 0075

AAA EXPECTED PROGENY DIFFERENCES

Production								Maternal						
CED	BW	WW	YW	RADG	DMI	YH	SC	HP	CEM	Milk	MW	MH		
+3	+4.7	+61	+110	+24	+96	+5	+1.15	+9.9	+4	+20	+77	+3		
Management				Carcass				\$Values						
Doc	Claw	Angle	HS	CW	Marb	RE	Fat	\$M	\$W	\$B	\$C			
-2	+58	+59	+82	+49	+40	+43	+0.12	+29	+40	+132	+200			

Madame Pride 5401 is an attractive Harvester daughter that stamps her progeny with style and look. A fancy daughter by Fortress was a top pick for JJ Angus from PA at the 2018 GMC Angus Sale.

5401 is due to calve this fall to the Colonel son, Bayonet 9A29.

AAA *18141864

Calved Apr. 5, 2015

Tattoo: 5401 / BE

SNP i50K

Genomic progeny: 3

Pasture bred to W E F
BAYONET 9A29 due to
calve mid November



Madame Pride 8401



S A V Madame Pride 5868

from Water's Edge Farm, Franklin

S A V HARVESTOR 0338

S A V INTERNATIONAL 2020

S A V EMBLYNETTE 5483

ANGUS FEMALE

S A V BISMARCK 5682

S A V MADAME PRIDE 9803

S A V MADAME PRIDE 5290

AAA EXPECTED PROGENY DIFFERENCES

Production								Maternal						
CED	BW	WW	YW	RADG	DMI	YH	SC	HP	CEM	Milk	MW	MH		
+1	+3.4	+68	+108	+23	+29	+4	+1.07	+9.2	+5	+20	+63	+4		
Management				Carcass				\$Values						
Doc	Claw	Angle	HS	CW	Marb	RE	Fat	\$M	\$W	\$B	\$C			
+15	+37	+37	+84	+44	+19	+71	+0.18	+61	+56	+121	+218			

With top 5% Claw and Angle EPDs along with top 15% WW and top 30% YW numbers to her credit, this stout International daughter backed by the maternal prowess of 9803 and the Madame Pride

AAA+*18204666

Calved Jan. 15, 2015

Tattoo: 5868 / BE

SNP i50K

Genomic progeny: 1

Pasture bred to W E F
BAYONET 9A29 due to
calve mid November



Madame Pride 9803

ALLIED
GENETIC RESOURCES

cow family should surface to the top of someone's list. 5868 came to Water's Edge as a \$30,000 pick from the 2016 SAV sale. Ask Dan Davenport of Iowa about her prolific and productive dam.



S A V EMBLYNETTE 9044 | DAM OF 3507



DAUGHTER BY INERTIA



SON BY COLONEL



SON BY ENHANCE



DAUGHTER BY INERTIA



GRAND DAUGHTER BY PAYWEIGHT 1682



DAUGHTER BY W E F SIN CITY



S A V Emblynette 3507

from Water's Edge Farm, Franklin

RITO 707 OF IDEAL 3407 7075

S A V RESOURCE 1441

S A V BLACKCAP MAY 4136

ANGUS DONOR

S A V BISMARCK 5682

W E F EMBLYNETTE 9044

S A V EMBLYNETTE 5573

AAA+*17579647

Calved Jan. 6, 2013

Tattoo: 3507 / BE

SNP HD50K

Genomic progeny: 18

Pasture bred to W E F Bayonet
9A29 and due mid November

AAA EXPECTED PROGENY DIFFERENCES

Production								Maternal				
CED	BW	WW	YW	RADG	DMI	YH	SC	HP	CEM	Milk	MW	MH
+3	+2.7	+70	+123	+26	+1.20	+7	+1.62	+11.3	+5	+30	+82	+4
Management				Carcass				\$Values				
Doc	Claw	Angle	HS	CW	Marb	RE	Fat	\$M	\$W	\$B	\$C	
+23	+51	+48	+46	+48	+24	+45	+031	+56	+65	+119	+210	

I remember well the day we bought 3507 as an open heifer at the 2014 Schaff Angus Valley Production Sale. She was our pick of about 200 or so females they sold that day. That cold, cold day! Sam and I learned where our ideal types of replacement heifer crossed over, and 3507 was it! She has always had the size and stature and natural thickness Sam wanted to breed into 'em, and she still had the depth and volume and maturity at a young age that showed you what kind of cow she would make. There aren't many in the world like this one, and however you describe her, it's gonna be heavy! 3507 is as quiet and easy to be around as any cow I've ever known, and that's why I refer to her as "my favorite cow on the planet."



Seedstock
CONNECTION



Seedstock
CONNECTION
105

W E F Emblynette E507

from Water's Edge Farm, Franklin

MCC DAYBREAK

QUAKER HILL RAMPAGE 0A36

QHF BLACKCAP 6E2 OF4V16 4355

ANGUS FEMALE

S A V RESOURCE 1441

S A V EMBLYNETTE 3507

S A V EMBLYNETTE 9044

AAA *19112518

Calved Nov. 8, 2017

Tattoo: E507 / BE

SNP Angus GS

Genomic progeny: 2

Pasture bred to W E F
BAYONET 9A29, due
on or around 12/1/22.

AAA EXPECTED PROGENY DIFFERENCES

		Production						Maternal				
CED	BW	WW	YW	RADG	DMI	YH	SC	HP	CEM	Milk	MW	MH
+9	+2.2	+73	+126	+27	+95	+9	+1.96	+11.4	+6	+27	+78	+3
		Carcass						\$Values				
Doc	Claw	Angle	HS	CW	Marb	RE	Fat	\$M	\$W	\$B	\$C	
+15	+4.9	+45	+46	+52	+60	+64	-0.03	+60	+68	+143	+245	

Our strategy with the Schaff Angus cattle was to start with a really good Angus female first and then use sires that complemented them genetically. The Rampage mating on 3507 improved the marbling EPD and overall carcass merit, and 3507 stamped this one with her type and kind. She also inherited 3507's quiet disposition which we've always appreciated. E507 is a cool younger version of her mother, and she sells safe in calf due around the first of December to W E F BAYONET 9A29.

Seedstock
CONNECTION
106

W E F Emblynette 4507

from Water's Edge Farm, Franklin

MYTTY IN FOCUS

A A R TEN X 7008 S A

A A R LADY KELTON 5551

ANGUS FEMALE

S A V RESOURCE 1441

W E F EEMBLYNETTE 3507

S A V EMBLYNETTE 9044

AAA *18166793

Calved Dec. 9, 2014

Tattoo: 4507 / BE

SNP i50K

Genomic progeny: 3

Pasture exposed to
W E F ATLAS 1327
Status available sale day.

AAA EXPECTED PROGENY DIFFERENCES

		Production						Maternal				
CED	BW	WW	YW	RADG	DMI	YH	SC	HP	CEM	Milk	MW	MH
+5	+1.8	+64	+115	+26	+85	+1.0	+1.61	+8.9	+8	+34	+57	+3
		Carcass						\$Values				
Doc	Claw	Angle	HS	CW	Marb	RE	Fat	\$M	\$W	\$B	\$C	
+19	+7.8	+58	+38	+43	+84	+39	+0.32	+47	+67	+143	+232	

4507 was the first calf of 3507. She's bigger framed and a different type of cow, but she pours the milk and raises a good calf every

ANGUS HEIFER CALF

Calved January 7, 2022

Tattoo: 2507 / BE



year. Kinda like the heifer on her side on sale day.

Seedstock
CONNECTION
106A



BALDRIDGE BEAST MODE



SYDGEN ENHANCE



G A R INERTIA



V A R SIGNAL

Embllynette 3507 Embryos

from Water's Edge Farm, Franklin

Guarantee 1 pregnancy on each set of 3 embryos
if work is performed by an IVF-certified embryologist.

104_A S A V Embllynette 3507 x Baldridge Beast Mode

104_B S A V Embllynette 3507 x SydGen Enhance

104_C S A V Embllynette 3507 x G A R Inertia

104_D S A V Embllynette 3507 x V A R Signal



WEF EMBLYNETTE 7505



WEF EMBLYNETTE J757



SERVICE SIRE | G A R HOMETOWN HERO



WEF EMBLYNETTE 7505

Emblynetette 7507 was the first calf of 4507 by Ten X. She was a beautiful heifer calf with extra style and balance. She has grown into a very productive cow that transmits clean lines and an extra punch of eye appeal in every calf.



G757 is a big, stout bred heifer from the 3507 cow family sired by Raindance and safe in calf for a fall baby. She'll be a pair not long after sale day!



REFERENCE SIRE | SITZ STELLAR 726D



SERVICE SIRE | HEIKEN BROADVIEW



W E F Emblynette 7507

from Water's Edge Farm, Franklin

BASIN PAYWEIGHT 006S

BASIN PAYWEIGHT 1682

21AR O LASS 7017

ANGUS FEMALE

A A R TEN X 7008 S A

W E F EMBLYNETTE 4507

S A V EMBLYNETTE 3507

AAA *18866303

Calved Jan. 2, 2017

Tattoo: 7507 / BE

SNP Angus GS

Genomic progeny: 3

Ai 5/26 to G A R

HOMETOWN HERO

& confirmed safe.

AAA EXPECTED PROGENY DIFFERENCES

Production								Maternal				
CED	BW	WW	YW	RADG	DMI	YH	SC	HP	CEM	Milk	MW	MH
+5	+7	+62	+113	+27	+52	+6	+1.56	+15.2	+9	+39	+42	+4
Management				Carcass				\$Values				
Doc	Claw	Angle	HS	CW	Marb	RE	Fat	\$M	\$W	\$B	\$C	
+9	+66	+57	+72	+50	+57	+37	+0.44	+66	+73	+139	+246	

7507 was Ai bred on May 26 to G A R Hometown Hero and has been confirmed safe to that Ai. She just weaned a fancy early spring bull calf and you can tell from the picture she does her job. Safe in calf.



W E F Emblynette G757

from Water's Edge Farm, Franklin

COLEMAN CHARLO 0256

S A V RAINDANCE 6848

S A V BLACKCAP MAY 4136

ANGUS FEMALE

BASIN PAYWEIGHT 1682

W E F EMBLYNETTE 7507

W E F EMBLYNETTE 4507

AAA *20116926

Calved Dec. 5, 2019

Tattoo: G757 / BE

SNP Angus GS

Pasture bred to W E F

BAYONET and due to

calve mid November.

AAA EXPECTED PROGENY DIFFERENCES

Production								Maternal				
CED	BW	WW	YW	RADG	DMI	YH	SC	HP	CEM	Milk	MW	MH
+12	+0	+51	+91	+22	+39	+3	+1.69	+10.6	+8	+31	+19	-1
Management				Carcass				\$Values				
Doc	Claw	Angle	HS	CW	Marb	RE	Fat	\$M	\$W	\$B	\$C	
+11	+58	+54	+91	+30	+56	+37	+0.16	+62	+60	+121	+219	



W E F Emblynette J757

from Water's Edge Farm, Franklin

MOHNEN SUBSTANTIAL 272

SITZ STELLAR 726D

SITZ PRIDE 200B

ANGUS FEMALE

BASIN PAYWEIGHT 1682

W E F EMBLYNETTE 7507

W E F EMBLYNETTE 4507

AAA *20138676

Calved March 1, 2021

Tattoo: J757 / BE

SNP Angus GS

Ai bred 5/26 to HEIKEN

BROADVIEW & confirmed

Safe in calf due 3/5/23.

AAA EXPECTED PROGENY DIFFERENCES

Production								Maternal				
CED	BW	WW	YW	RADG	DMI	YH	SC	HP	CEM	Milk	MW	MH
+6	+2	+63	+106	+20	+88	+2	+0.98	+14.1	+9	+31	+16	-2
Management				Carcass				\$Values				
Doc	Claw	Angle	HS	CW	Marb	RE	Fat	\$M	\$W	\$B	\$C	
+7	+42	+51	+10	+35	+68	-13	+0.75	+86	+74	+106	+223	

This pretty SITZ STELLAR x 1682 traces back to 3507, and she looks like she'll be a little tank when she matures. The STELLAR daughters make awesome mama cows. This one should, too.

Emblynetette cow family



Seedstock
CONNECTION

Full sister to
S A V International!
She Sells!



DAM | S A V EMBLYNETTE 5483



DAUGHTER | W E F EMBLYNETTE 8451



SON | W E F EMBASSY 7451

Seedstock
CONNECTION
110

S A V Emblynetette 5451

from Water's Edge Farm, Franklin

S A V HERITAGE 6295

S A V HARVESTOR 0338

S A V EMBLYNETTE 7749

ANGUS FEMALE

S A V 8180 TRAVELER 004

S A V EMBLYNETTE 5483

S A V EMBLYNETTE 7260

AAA EXPECTED PROGENY DIFFERENCES

Production									Maternal				
CED	BW	WW	YW	RADG	DMI	YH	SC		HP	CEM	Milk	MW	MH
+6	+2.0	+59	+101	+22	+73	+7	+99		+10.5	+8	+30	+47	+0
Management									\$Values				
Doc	Claw	Angle	HS	CW	Marb	RE	Fat		\$M	\$W	\$B	\$C	
+4	+53	+43	+70	+38	+42	+44	-.001		+56	+61	+120	+212	

AAA+*18194142

Calved Jan. 1, 2015

Tattoo: 5451 / BE

SNP i50K

Genomic progeny: 5

PREGNANCY STATUS
AVAILABLE SALE DAY

Full sister to International!

Emblynetette 5451 was among nine flush sisters Kelly Schaff offered on his 2016 SAV sale. All full sisters to S A V International, a tenth flush sister had been the National Angus Foundation heifer a month or so prior, commanding over \$200,000 to benefit the cause. At the end of the day, we had put together a group of five females and a serious herd sire prospect. From the day their first calves hit the ground, 5451 was clearly out to prove her worth! Her first calf was W E F Embassy 7451 which we kept and used in the WEF program before he was purchased by David Smith. Her second calf, Emblynetette 8451, has followed suit and like her mother, does an exceptional job. 5451 should be considered a donor candidate for any seirous program. This cow will get it done for you!

Seedstock
CONNECTION
110A

W E F Emblynetette 2451

ANGUS HEIFER CALF

BALDRIDGE BEAST MODE

SIRE: W E F BEAR CLAW 8179

YON BURGESS X179

AAA 20349007

Tattoo: 2605 / BE

Calved Jan. 27, 2022

SNP Angus GS



Yon Hazel cow family



W E F Hazel 5327

from Water's Edge Farm, Franklin

S A V FINAL ANSWER 0035

CONNEALY CAPITALIST 028

PRIDES PITA OF CONANGA 8821

ANGUS FEMALE

HYLINE RIGHT TIME 338

YON HAZEL S327

YON HAZEL N233

AAA EXPECTED PROGENY DIFFERENCES

Production								Maternal							
CED	BW	WW	YW	RADG	DMI	YH	SC	HP	CEM	Milk	MW	MH			
+3	+2.6	+64	+111	+22	+1.17	+3	+81	+13.1	+5	+25	+38	+0			
Management								Carcass							
Doc	Claw	Angle	HS	CW	Marb	RE	Fat	\$M	\$W	\$B	\$C				
+7	+40	+37	+21	+41	+19	+95	-.021	+76	+61	+114	+224				

We'll find the real cowboys here. They'll be gathered around 5327's pen trying to figure out why she isn't in the front of the book instead of on the very last page! We cataloged the Angus section by cow family, and with only one Hazel and one Mamie in the sale, this is where these two landed, but don't jump to any conclusions based on that. Chris would tell you keep an eye on this one and don't let her get lost in the hullabaloo.

Hazel 5327 comes from the first cow we purchased from Yon Family Farms back in 2010, YON Hazel S327. The Yon cattle flat worked at Water's Edge, and the Hazels have become family here. Chris has been saying this Capitalist 028 daughter deserves to be flushed, and he's probably right. Top 3% EPD for hair shedding; top 4% RE and (foot) Angle; top 10% Claw, \$M, and Fat; top 25% WW, YW and \$W; top 30% HP; top 35% \$EN... Those numbers draw a pretty accurate picture of the job Hazel 5327 does every year! Chris actually owns her only daughter; and two sons are working for Jay Sears nearby and James and Rachel Knight in Midway. Commercially speaking, this cow does as good a job as any cow in this herd. She deserves some attention on sale day.



44 Mamie 4303

from Water's Edge Farm, Franklin

A A R TEN X 7008 S A

V A R DISCOVERY 2240

DEER VALLEY RITA 0308

ANGUS FEMALE

BC ROCKET 44

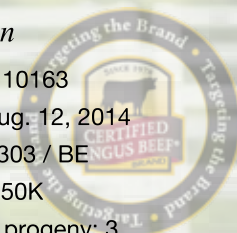
44 MAMIE Z373

EXAR MAMIE 9659

AAA EXPECTED PROGENY DIFFERENCES

Production								Maternal							
CED	BW	WW	YW	RADG	DMI	YH	SC	HP	CEM	Milk	MW	MH			
+4	+2.0	+62	+112	+24	+1.43	+7	+77	+8.6	+8	+36	+62	+5			
Management								Carcass							
Doc	Claw	Angle	HS	CW	Marb	RE	Fat	\$M	\$W	\$B	\$C				
+7	+.56	+.38	+.42	+42	+.92	+.68	+.002	+49	+65	+150	+244				

Mamie 4303 is a female we acquired directly from 44 Farms in Texas. She's a combination type female that blends the institutions of growth performance, maternal ability, and carcass merit and transmits those traits into her progeny. She's done a nice job for us, and we're sure she'll continue to do her job anywhere she goes. 4303 should be short bred to the SQUARE B ATLANTIS son, W E F ATLAS 1327. We'll have her pregnancy status available on sale day.



AAA *18110163

Calved Aug. 12, 2014

Tattoo: 4303 / BE

SNP i50K

Genomic progeny: 3

Pasture exposed to

W E F ATLAS 1327

Status available sale day.

STARTING BIDS & BUY NOW PRICES

LOT #	START BID	BUY NOW	PRICE	BUYER #	LOT #	START BID	BUY NOW	PRICE	BUYER #
1A-F	\$10,000	\$25,000	\$ _____	_____	61	\$1,500	\$2,600	\$ _____	_____
2A-H	\$4,000	\$8,000	\$ _____	_____	62	\$1,500	\$2,500	\$ _____	_____
3	\$2,500	\$6,500	\$ _____	_____	63	\$1,400	\$2,200	\$ _____	_____
4/4A	\$4,000	\$6,500	\$ _____	_____	64	\$1,500	\$3,100	\$ _____	_____
5	\$2,500	\$5,000	\$ _____	_____	65	\$1,500	\$2,800	\$ _____	_____
6A-D	\$2,000	\$3,500	\$ _____	_____	66	\$1,500	\$2,600	\$ _____	_____
7	\$2,000	\$4,000	\$ _____	_____	67	\$1,800	\$3,500	\$ _____	_____
7A	\$1,000	\$1,600	\$ _____	_____	68	\$1,800	\$3,200	\$ _____	_____
8	\$2,000	\$4,000	\$ _____	_____	69	\$1,800	\$5,500	\$ _____	_____
9	\$300 x 3	\$1,200 x 3	\$ _____	_____	70	\$1,800	\$3,500	\$ _____	_____
10	\$2,000	\$5,000	\$ _____	_____	71	\$1,800	\$5,000	\$ _____	_____
11	\$300 x 3	\$1,000 x 3	\$ _____	_____	72	\$1,800	\$5,200	\$ _____	_____
12A-B	\$5,000	\$7,500	\$ _____	_____	73	\$1,800	\$5,500	\$ _____	_____
13A-C	\$4,000	\$7,500	\$ _____	_____	74	\$1,800	\$4,000	\$ _____	_____
14	\$3,000	\$4,250	\$ _____	_____	75	\$1,800	\$4,200	\$ _____	_____
15	\$2,500	\$4,000	\$ _____	_____	76	\$2,000	\$3,600	\$ _____	_____
16	\$1,500	\$2,500	\$ _____	_____	77	\$1,700	\$2,800	\$ _____	_____
17	\$1,500	\$3,000	\$ _____	_____	78	\$1,800	\$3,500	\$ _____	_____
18	\$1,500	\$3,000	\$ _____	_____	79	\$2,500	\$4,500	\$ _____	_____
19	\$1,500	\$2,500	\$ _____	_____	80	\$1,800	\$4,200	\$ _____	_____
20	\$2,000	\$3,200	\$ _____	_____	81	\$2,500	\$5,000	\$ _____	_____
21	\$2,000	\$5,500	\$ _____	_____	82	\$1,800	\$3,500	\$ _____	_____
22	\$1,800	\$3,500	\$ _____	_____	83	\$1,800	\$4,200	\$ _____	_____
23	\$1,500	\$3,200	\$ _____	_____	84	\$1,800	\$3,800	\$ _____	_____
24	\$1,800	\$4,000	\$ _____	_____	85	\$1,800	\$4,200	\$ _____	_____
25	\$1,800	\$3,500	\$ _____	_____	86A	\$1,500	\$2,300	\$ _____	_____
26	\$1,800	\$4,000	\$ _____	_____	86B	\$1,500	\$2,300	\$ _____	_____
27	\$1,800	\$3,600	\$ _____	_____	87A-G	\$3,600	\$6,500	\$ _____	_____
28	\$1,800	\$3,200	\$ _____	_____	88	\$2,500	\$5,000	\$ _____	_____
29	\$1,800	\$3,100	\$ _____	_____	89	\$2,500	\$4,000	\$ _____	_____
30	\$1,800	\$4,200	\$ _____	_____	90	\$2,500	\$5,000	\$ _____	_____
31	\$1,800	\$4,100	\$ _____	_____	91	\$10,000	\$40,000	\$ _____	_____
32	\$1,800	\$3,750	\$ _____	_____	91A	\$3,500	\$6,500	\$ _____	_____
33	\$2,500	\$5,000	\$ _____	_____	91B	\$500 x 3	\$1,500 x 3	\$ _____	_____
34	\$2,500	\$5,000	\$ _____	_____	92	\$3,500	\$6,500	\$ _____	_____
35	\$1,800	\$3,500	\$ _____	_____	92A	\$1,500	\$2,000	\$ _____	_____
36	\$1,800	\$3,500	\$ _____	_____	93	\$2,500	\$16,000	\$ _____	_____
37	\$1,800	\$3,500	\$ _____	_____	94	\$2,000	\$5,000	\$ _____	_____
38	\$2,000	\$5,200	\$ _____	_____	95	\$2,000	\$5,000	\$ _____	_____
39	\$1,800	\$3,500	\$ _____	_____	96	\$1,800	\$4,000	\$ _____	_____
40	\$2,500	\$5,500	\$ _____	_____	96A	\$1,500	\$2,500	\$ _____	_____
41	\$1,800	\$4,500	\$ _____	_____	97	\$5,000	\$25,000	\$ _____	_____
42	\$1,800	\$3,500	\$ _____	_____	97A-D	TBD	TBD	\$ _____	_____
43	\$1,700	\$3,200	\$ _____	_____	98	\$2,000	\$5,500	\$ _____	_____
44	\$1,700	\$3,100	\$ _____	_____	99	\$2,000	\$5,500	\$ _____	_____
45	\$1,500	\$2,600	\$ _____	_____	100	\$2,000	\$4,500	\$ _____	_____
46	\$1,800	\$3,800	\$ _____	_____	101	\$2,500	\$6,500	\$ _____	_____
47	\$1,800	\$6,000	\$ _____	_____	102	\$2,000	\$5,000	\$ _____	_____
48	\$1,800	\$3,200	\$ _____	_____	103	\$2,000	\$5,000	\$ _____	_____
49	\$1,500	\$2,800	\$ _____	_____	104	\$3,500	\$18,000	\$ _____	_____
50	\$1,800	\$4,500	\$ _____	_____	104A-D	TBD	TBD	\$ _____	_____
51	\$1,500	\$2,800	\$ _____	_____	105	\$2,000	\$4,200	\$ _____	_____
52	\$2,000	\$3,600	\$ _____	_____	106	\$1,800	\$3,200	\$ _____	_____
53	\$1,800	\$3,200	\$ _____	_____	106A	\$1,800	\$3,200	\$ _____	_____
54	\$1,800	\$3,200	\$ _____	_____	107	\$1,800	\$4,500	\$ _____	_____
55	\$1,500	\$2,600	\$ _____	_____	108	\$2,500	\$5,000	\$ _____	_____
56	\$1,800	\$2,600	\$ _____	_____	109	\$1,800	\$3,800	\$ _____	_____
57	\$1,700	\$2,800	\$ _____	_____	110	\$3,500	\$9,000	\$ _____	_____
58	\$1,800	\$3,500	\$ _____	_____	110A	\$3,500	\$5,000	\$ _____	_____
59	\$1,800	\$3,500	\$ _____	_____	111	\$2,000	\$4,500	\$ _____	_____
60	\$1,500	\$3,200	\$ _____	_____	112	\$1,500	\$3,500	\$ _____	_____

ALL PRICES SUBJECT TO CHANGE BEFORE SALE DAY WITHOUT NOTIFICATION DEPENDING ON MARKET CONDITIONS.
ANY CHANGES OR CORRECTIONS PRINTED OR ANNOUNCED ON SALE DAY TAKE PRECEDENCE OVER PREVIOUSLY PRINTED PRICES.

TENNESSEE *Seedstock* CONNECTION
9387 S LICK CREEK RD | LYLES, TN 37098

FIRST CLASS MAIL

DO NOT DELAY

TIME SENSITIVE MATERIAL



SIMMENTAL | ANGUS | SIMANGUS

FEATURING THE MATURE COW HERD DISPERSAL OF
PREMIER ANGUS GENETICS FROM WATER'S EDGE FARM

*Angus Donors Valued
Over \$200,000
Sell September 24th!*