

Martin Farms
**OPEN
HOUSE
AT THE
FARM**
SEPTEMBER 24, 2016



OPEN HOUSE AT T

Lyles, Tennessee... Less than one hour west of Nashville



Martin Farms

Homozygous Black & Polled Simmental & SimAngus

Simmental genetics since 1971

Neil Martin
[h] 931-670-3646
[c] 931-623-2634

Christopher Martin
931-580-6821 [c]
martin.farms@yahoo.com

with special guests


WATER'S EDGE
FARM

Angus SimAngus Simmental

Located in historic Leiper's Fork just outside Franklin, Tennessee
Drs. Sam & Leslie Lynch, owners
Chris Martin, farm manager
931-580-6821

**WALL
BROS
FARM**

David Wall 615 789 9371
Lennie Wall 615 390 1942
Dickson, Tennessee
wallbrothersfarm@gmail.com

Slate Farms
& CATTLE COMPANY

Steve Slate
Vanleer, Tennessee
slatefarms.com

931-206-5026 cell
615-763-2693 home
slatefarms@att.net

48 Creek Livestock

48

Right size. Right disposition. More muscle.

Rush, New York & Waynesboro, Tennessee
Jerry Horton | 585-301-0708

THE FARM

SCHEDULE OF EVENTS

FRIDAY, SEPTEMBER 23

Wlm. Kenneth Ambrose Heifer Scholarship
Finalist Interviews, 2p

Cattle on display, 4-6p

Supper sponsored by
Jane Ambrose-Herron State Farm, 6p

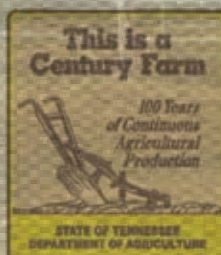
SATURDAY, SEPTEMBER 24

Cattle on display, 10a

Bid sheets open, 10a

Lunch courtesy of the Open House partners
& East Hickman FFA, 12 noon

Bids close at 1:30p



ASA Performance



VISIT MARTINFARMSBEEF.COM



THE OPEN HOUSE SILENT AUCTION

NO AUCTIONEER. NO FAST TALKING. NO PRESSURE.

Cattle will be grouped in pens and identified with ear tags. The minimum opening bid for each lot is printed in the catalog and on that animal's individual bid sheet which will be kept at the bidding table. There will be plenty of time to evaluate the cattle, study the data and ask any questions. Buyers may place a bid on any lot at any time throughout the day until the silent bidding closes at 1:30 p.m.

Bid sheets will close in numerical order as the cattle are listed in the catalog. Animals with more than one bid will be offered to any active bidder in an open bidding format. The highest bid above the minimum opening bid wins the auction for that animal. Cattle that do not receive a bid during the silent auction may or may not be offered at the minimum opening bid after the completion of the sale.



GENERAL INFORMATION

General Information about Open House at the Farm

LOCATION

Martin Farms is located just off Highway 7, only fifteen minutes south of I-40 at Exit 172 in Dickson. Nashville International Airport is an easy one-hour drive away. Feel free to contact us if you need help with travel arrangements.

DIRECTIONS

From I-40, take Exit 172 toward Centerville. Travel south on Hwy 46 approximately 7 miles to the four-way stop at Hwy 100 and Hwy 7. Go straight through the light onto Hwy 7 and drive 4.7 miles to South Lick Creek Road on the right. You'll see our sign and our barn.

From I-65, take Exit 46 toward Columbia. Stay straight through three red lights and turn right onto Hwy 7. Travel north on Hwy 7 approximately 23 miles to the second road marked S Lick Creek on the left.

ACCOMMODATIONS

Several hotels are located at the Dickson exit, Exit 172 off I-40 at Hwy 46 about 15 minutes from the farm. If you should need help with accommodations, please let us know. We will be glad to help with any arrangements needed.

Holiday Inn Express	615-446-2781
Hampton Inn Dickson	615-446-1088
Comfort Inn Dickson	615-740-1000

TERMS OF SALE

All cattle sell under the suggested terms set forth by the American Simmental Association and are guaranteed to be breeders as defined in those terms. A written copy of the terms is available by request.

SALE UPDATES

We have made every attempt to supply the most current and accurate information available on the cattle being offered for sale. Individual performance data and ratios are available by request or by logging in to the ASA website at simmental.org. Any updates or additional information made available at the Open House will take precedence over previously printed material.

SILENT BIDDING

Bidding will be done by preassigned bidder numbers. Please register before placing your bid to obtain your bidding number and confirm all contact information. Phone and absentee bids are welcomed and will be strictly confidential. Feel free to contact anyone associated with the sale and he will be glad to help you place your bid.

TRUCKING & INSURANCE

Feel free to ask for assistance with trucking or insurance. We are glad to help make the most economical arrangements possible.

GENETIC DEFECTS

The American Simmental Association identifies cattle as either known or potential carriers of any deleterious genetic conditions. Any possible carriers of known defects in our breeding program have been tested and documented with ASA, and known carriers of DD are identified in the sale catalog. For more information about known genetic conditions or for answers to questions about genetic testing, visit simmental.org and click on the Genetic Defects tab.

PHONE NUMBERS

Neil Martin, 931-670-3646 [house] or 931-623-2634 [cell]
Chris Martin, 931-580-6821 [cell]
Steve Slate, 931-206-5026 [cell]

MARKETING TEAM

Chris Davis, ASA Field Representative 502-827-1233
Chris Ivie, Tennessee Simmental Assoc. 931-215-0316
Jeremie Ruble, Ruble Cattle Services 406-581-7940

HEALTH & MANAGEMENT

All cattle have received routine vaccinations for IBR, BRSV, BVD, PI3, Lepto and Vibrio. Calves receive blackleg vaccinations and all necessary boosters. Cattle are maintained on native grass pastures and a complete mineral program. Calves and yearlings are supplemented with five to ten pounds of grain per head per day for added growth.


PREGNANCY STATUS & EMBRYO SEXATION

All females selling as safe in calf have been palpated or ultrasounded and determined to be so by a licensed veterinarian. Any guarantees as to pregnancy status are covered in the ASA Terms of Sale. In the case of an embryo that has been sexed and is selling as either male or female, the sex of the fetus is not guaranteed. We believe ultrasound to be highly accurate with a slight margin of error.

EPDS

The EPDs printed in this catalog are Fall 2016 numbers and are the latest available from ASA. Some EPDs are not listed on some lots due only to space considerations. To view the most complete EPDs and percentile rankings, log in to simmental.org.

TOTAL HERD ENROLLMENT

 Martin Farms is a voluntary member of ASA's Total Herd Enrollment. 2016 TR option fees cover the cost of registration and first transfer for any calf born during the fall 2016 calving season (June 1 through December 31).

PHOTOS OF CATTLE

We've heard comments that the pictures in the catalog don't do our cattle justice. Cattle are pictured in pasture condition--not fitted for a show--and due to the developmental stage of the calves, most of the cattle will change considerably between the time photos are taken and our sale day. We make an effort to present our cattle favorably and under real conditions, and we are confident they will look the same the day after you get them home as they do at our place.

DISPOSITION SCORES

We have begun to report disposition scores on all calves at weaning using the following scores. Complete descriptions can be found on page 25 of the July/August 2011 issue of the Register.

- 1 - Very Docile, "gentle and easy to handle"
- 2 - Docile, "calm natured but may become restless in the chute"
- 3 - Nervous, "temperment is manageable but may become impatient while in the chute or being sorted"

Cattle with scores of 4, 5 or 6 will be culled due to unmanageability.

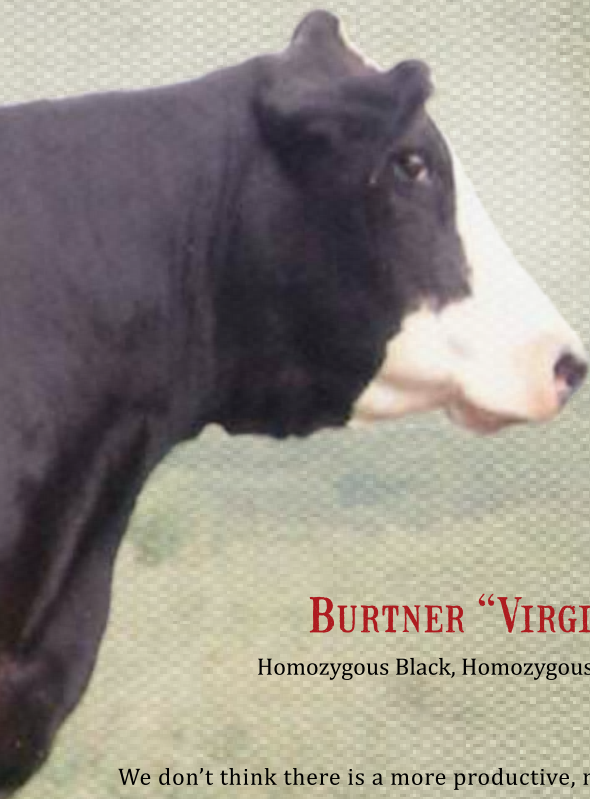
The Uncommon Wealth of “V



Chris purchased the “Virginia” XN9 cow as a 2-year-old first-calf-heifer in 1990 at Scotty Burtner’s Bunker Hill Mature Cow Herd Dispersal in Mount Solon, VA. She came into the ring with a five-day-old heifer calf, and Chris and Jeanie thought she looked like the kind of young cow that would someday become known as “the best cow we ever owned.” They were pretty close to being right on the mark.

“Virginia” retired at age 17, and structurally she was still as sound as ever. She was a cornerstone in our homozygous black and polled breeding program, and her influence and impact on our present day cow herd can not be measured. Her daughters and granddaughters have consistently been some of the top-producing cows in our herd, and the bulls are the kind our commercial bull buyers pick out whenever they come to shop.

Virginia”



BURTNER “VIRGINIA” XN9

Homozygous Black, Homozygous Polled Purebred

We don't think there is a more productive, more predictable, or more commercially-oriented cow family represented in our current breeding program. At last year's sale, MF Vanilla Bean, a great-grandaughter of the “Virginia” cow, became our record high-seller at \$18,000. Vanilla Bean now represents the MF prefix and the Virginia cow family in the reputable Hill Top Simmentals program of astute South Dakota cattlemen Kevin and Jaron Van Beek. And while we can't say we don't miss seeing her in our pastures, it's nice to know somebody appreciates her as much as Kevin and Jaron do!

With every generation, we invest a considerable amount of time in our genetics. We study EPDs. We evaluate soundness, type, and performance. And we plan matings we hope will keep moving our program in the right direction. Our 2016 Open House offering will feature both bulls and females from this special cow family, including ET genetics from Vanilla Bean, a maternal half brother that's as solid as any herd bull prospect in this offering, and Vanilla Bean's dam herself. Oh, and we think she's carrying a full sib to Vanilla Bean!

This year's sale also features another favored member of the “Virginia” clan. True to our commitment to offer every female in the spring calving herd over five years of age, the donor MF Pink is featured in this offering along with two ET daughters, two ET pregnancies, and her last natural heifer calf.

Any of these descendants of “Virginia” could have the same impact on any breeding program that Burtner Cow XN9 has had on ours. We work hard to make every calf in the crop as good as another, but this has proven to be a special group. We encourage you to take advantage of any opportunity to add some of these uncommon genetics to your breeding program.

What's this mean?



The heifer scholarship logo means a heifer is eligible to be chosen by one of our Kenneth Ambrose Memorial Heifer Scholarship winners. Three heifers that are cataloged and identified with this logo will be chosen by an exceptional young cattlemen on Friday after our heifer scholarship finalist interviews, and those three animals will not be in the sale on Saturday.



The futurity logo denotes heifers that are eligible to be nominated for the 2017 Tennessee Junior Simmental Futurity. The breeder will pay the \$50 nomination fee for any junior buyer who declares on sale day he or she plans to show the heifer they purchase. This does not mean juniors are required to show the heifer they buy. The deadline to nominate any heifer is 30 days after sale day; however, the nomination fee increases to \$100 of which we will pay half.



The TAEP logo identifies animals that qualify for genetics cost share through the 2016-17 Tennessee Agricultural Enhancement Program. TAEP guidelines state you may not turn in receipts for purchases made prior to October 1; however, you may bid on the right to purchase qualifying animals after that date. We will be happy to work with you within the context of any program rules and regulations, so if you plan to apply for genetics cost share this year and you are the successful bidder on any qualifying bull or bred heifer in this sale, please do not collect paperwork or make settlement following the sale without first notifying us. For more information about the TAEP program and how to qualify for TAEP cost share, please visit tn.gov/agriculture.

She's anything but vanilla.



MF Vanilla Bean
Donor dam of Lots 1, 2 & 2A

Adam Moss

We couldn't think of a better way to start off the 2016 offering than with this set of flush mate sisters out of last year's Lot 1 crowd favorite and \$18,000 record high-seller, MF Vanilla Bean. These three direct daughters of Vanilla Bean are homozygous black and homozygous polled with an outcross pedigree to most bulls available today, so the options are wide open! Besides the obvious influence of their popular dam, their pedigree stacks two proven and prolific cow families in the Burtner "Virginia" XN9 matriarch of Martin Farms and the prolific 152C donor of Harry and Lisa Moser's.

Vanilla Bean recorded an average WW ratio of 107 on her first four natural calves, each one a feature lot in a past Open House sale. That earned her a chance to be called a donor, and her first flush produced MF/WEF Sweet Vidalia selected by Hill Top Simmentals of South Dakota as the high-selling open female in our 2014 sale and MF/WEF Cool Beans, the \$10,000 co-high-seller at the 2016 New Day Spring Bull Sale.

We're offering full interest and full possession of the buyer's choice of these three flush mate sisters. One for you, two for us. And just to be clear, there is no plan to surprise the crowd by selling a second pick!



Lot 1B, MF Cotton

Lot 1A, MF Cookie

Lot 1C, MF Coconut

Spoiled for choice.



LOT 1 | PICK OF THE FLUSH

Homozygous Black & Homozygous Polled SimAngus

B P F Special Focus 504
MSR Great Plains 3793A
MSR 9215W of 5751 BT

MF Vanilla Bean

S S Traveler T510 2T22
MF Vanilla Bean
MF Telluride

Fall 2016 EPDs

	CE	BW	WW	YW	ADG	MCE	Milk	MWW	DOC	CW	YG	Marb	BF	REA	\$API	\$TI
EPD	13.4	1.3	66.2	104.7	0.24	10.4	24.5	57.6	9.2	34.3	-0.06	.45	.016	.60	\$140	\$75
RANK	30%	65%	30%	25%	25%	20%	25%	20%	85%	25%	95%	35%	95%	65%	25%	30%



Adam Moss

1A | MF COOKIE

Calved Oct. 20, 2015
Tattoo: C34Z
ASA: 3030015
Adj Bwt: 83 Ratio: ET
Adj 205: 633 Ratio: ET



Adam Moss



Adam Moss

1c | MF COCONUT

Calved Sept. 30, 2015
Tattoo: C22A
ASA: 3030023
Adj Bwt: 76 Ratio: ET
Adj 205: 611 Ratio: ET

1B | MF COTTON

Calved Oct. 25, 2015
Tattoo: C31Y
ASA: 3030011
Adj Bwt: 84 Ratio: ET
Adj 205: 593 Ratio: ET



Sometimes the 'Dark Horse' is also the favorite.

LOT 2 | MF/LVF DARK HORSE

Homozygous Black & Homozygous Polled 3/4 Blood
from Kendall Martin & Liberty Valley Farm, Petersburg, TN

Mr NLC Upgrade U8676
GLS Integrate Z3
GLS Miss BTE W149

MF/LVF Dark Horse

S S Traveler T510 2T22
MF Vanilla Bean
MF Telluride

Calved Feb. 1, 2016

Tattoo: 201D

ASA: 3099222

Adj Bwt: 72 Ratio: ET

Starting bid: \$5,000

Final price: \$ _____

Fall 2016 EPDs

	CE	BW	WW	YW	ADG	MCE	Mik	MWW	DOC	CW	YG	Marb	BF	REA	\$API	\$TI
EPD	10.9	1.4	76.4	129.4	0.33	8.3	23.0	61.3	10.2	49.3	-0.22	.29	-.035	.90	\$132	\$80
RANK	50%	70%	10%	2%	1%	40%	40%	10%	70%	3%	60%	60%	55%	15%	35%	15%

Like a great sire, a truly great female produces both sons and daughters that have the potential to impact a breeding program or even an industry! Vanilla Bean's first flush to Upgrade produced thirty viable embryos and has resulted in several progeny that have been crowd favorites and high sellers. We're not sure she has produced another one as good as this one.

Chris gave Kendall an embryo with the hope of her getting a heifer that might show. Initially, there was some disappointment that the calf was a bull, but it didn't take long to know he was going to be special. Dark Horse presents an opportunity to own a herd sire backed by major cow power with a solid, balanced EPD proof. He's not such a "dark horse" after all.



Lot 2, MF/LVF Dark Horse

CM



MF Vanilla Bean
Donor dam of Lots 1, 2 & 2A

Jerry Horton of 48 Creek Livestock has been a good supporter of our Open House sale, and he's always brought back genetics from our program that we're happy to feature as a sale highlight. This Vanilla Bean embryo package is definitely that!

MF Vanilla Bean was our Lot 1 record high-seller from the 2015 Open



MF/WEF Sweet Vidalia
Upgrade x MF Vanilla Bean

Full sib embryos sell in the
Lot 2A embryo package



Mr NLC Upgrade U8676
Sire of embryos selling in Lot 2A

LOT 2A | MF VANILLA BEAN EMBRYOS

Homozygous Black & Polled 3/4 Blood Embryos
from 48 Creek Livestock, Rush, NY & Waynesboro, TN

One Embryo

MF Vanilla Bean x GLS Integrate Z3

Starting bid: \$450 x 3

Final price: \$_____

PROJECTED MATING EPDs - Vanilla Bean x Integrate

CE	BW	WW	YW	MCE	Milk	CW	YG	Marb	REA	\$API	\$TI
10.9	1.35	76.4	129.4	8.4	23.1	49.4	-.22	.30	.90	\$132	\$80

Two Embryos

MF Vanilla Bean x Mr NLC Upgrade

PROJECTED MATING EPDs - Vanilla Bean x Upgrade

CE	BW	WW	YW	MCE	Milk	CW	YG	Marb	REA	\$API	\$TI
10.2	1.5	72.3	110.9	8.1	21.5	38.0	-.32	.42	1.00	\$136	\$80

House at the Farm. Jerry saw her potential early in her career as a donor and partnered with us on her first two flushes. These three embryos are all he has left from that partnership, and he's making them available here.

Lot 2A contains one embryo sired by Integrate and two by Upgrade.

We'll guarantee one pregnancy if work is done by a certified embryologist.



GLS Integrate Z3, Sire of Lot 2
Sire of one embryo in Lot 2A embryo package

LOT 3 | MF TELLURIDE

Homozygous Black & Polled Purebred

RIV Black Choctaw 866H
MSR Logo3083N
DS Ms 600U 152C

MF Telluride

Black Polled Dakota
MF Black Velvet
Burtner "Virginia" XN9

Calved Feb. 21, 2007

Tattoo: T9D

ASA: 2386701

Adj Bwt: 76 Ratio: 105

Adj 205: 562 Ratio: 99

Starting bid: \$1,500

Final price: \$_____

Fall 2016 EPDs

CE	BW	WW	YW	MCE	Milk	CW	YG	Marb	REA	\$API	\$TI
6.2	4.2	60.6	75.9	11.1	19.4	20.7	-.28	.24	0.47	\$116	\$65

After last year's Open House, we had to think for a long while about a way to step up the offering in 2016. Chris Davis who was representing ASA at last year's sale had made a comment about a select group of open heifers he thought were "good enough to start over with." So the more we thought about that, well, that got us thinking.



Reference Sire
S S Traveler T510 2T22

With the decision to offer every female in the spring-calving herd over five years of age comes the opportunity to purchase the dam of MF Vanilla Bean. She was AI bred to be carrying a full sib to Vanilla, and we think she is. T9D was AI'd to S S Traveler T510 2T22 on 4/2 and then exposed to MF Alter Ego. She was examined 105 days safe on 7/23.

Everybody loves a Reymond.



MF Pink x MCM Top Grade
Purchased by Emily Ivey in the 2013 Open House

LOT 4 | MF PINK

Homozygous Black & Homozygous Polled Purebred

HC Power Drive 88H
TripleC El Poderoso Rey
JSF Fiesta

MF Pink

GW Lucky One 686K
MF Polly Pocket
LVL Kismet

Calved Jan. 3, 2009

Tattoo: W9R

ASA: 2488097

Adj Bwt: 76 Ratio: 101

Adj 205: 622 Ratio: 104

Starting bid: \$8,000

Final price: \$ _____

Fall 2016 EPDs

	CE	BW	WW	YW	ADG	MCE	Milk	MWW	DOC	CW	YG	Marb	BF	REA	\$API	\$TI
EPD	8.3	0.8	62.5	101.2	0.24	15.7	24.0	55.2	9.8	31.8	-0.35	.17	-.037	1.06	\$131	\$72
RANK	60%	30%	50%	25%	10%	2%	30%	35%	75%	5%	40%	45%	90%	10%	35%	35%

MF Pink is a uniquely bred, homozygous black and polled purebred female that has earned her way into the donor pen at Martin Farms by weaning fast-growing calves with high marketability and customer appeal. While she's exactly herd average on five natural calves for birth weight, she records a weaning ratio of 109 on 5 progeny and posts yearling data of 113 for YW; 111 for IMF; and 106 for REA.

MF Pink is a fertile, reliable cow that works in any production scenario and has been a consistent and prolific donor in transplant, averaging 13 embryos on five flushes. She's always quiet and easy to be around, and let's not forget she's a member of the Burtner "Virginia" cow family. She's been a favorite in our herd since the day she hit the ground, and she's one that will be difficult to watch being loaded out come sale day.



Lot 4, MF Pink
Dam of Lots 5, 6 & 7
Donor dam of Lots 8A & 8B

Adam Moss



Kendall & MF/WEF Indigo
Full sister to Lot 5



LOT 5 | 48C PINK 106C

Homozygous Black & Polled SimAngus

from 48 Creek Livestock, Rush, NY & Waynesboro, TN

S A V Brilliance 8077

PVF Insight 0129

PVF Missie 790

48C Pink 106C

Triple C El Poderoso Rey

MF Pink

MF Polly Pocket

Calved Oct. 6, 2015

Tattoo: 106C

ASA: 3072448

Starting bid: \$3,200

Final price: \$_____

Fall 2016 EPDs

	CE	BW	WW	YW	ADG	MCE	Milk	MWW	DOC	CW	YG	Marb	BF	REA	\$API	\$TI
EPD	11.9	0.3	68.0	116.0	0.30	11.6	28.0	62.0	11.1	40.0	-0.34	.33	-.036	1.15	\$135	\$76
RANK	40%	50%	25%	10%	4%	10%	10%	10%	50%	15%	25%	55%	55%	2%	35%	25%

MF Pink was an open heifer in our 2009 Open House where she was priced for \$2,250 and didn't sell. What were we thinking? As a two-year-old, her first bull calf was a special sale attraction and had several friends on sale day. Jared Wareham of Cattlemen's Choice Genetics in Missouri was the successful bidder at \$4,300 which topped our sale offering that year, and Jared has made us proud by developing MF Straightforward into a marketable, high-octane performance sire. We had enough confidence in Straightforward to sample him in our own program, and you'll see a few calves in this offering, including our #1 weaning weight ratio bull calf, MF Direction, listed as Lot 62.

Pink's next two natural calves were Open House feature lots, including her 2013 heifer calf by Top Grade selected by Emily Ivey who campaigned her to 6th overall at the AJSA Eastern Regional before claiming Tennessee Junior Simmental Futurity Champion Purebred honors.

Lots 5, 6 and 7 give buyers three opportunities to evaluate Pink progeny by three different sires in three different stages of their lives, from a weaned heifer calf to a bred heifer due to calve this fall. One is a purebred, one a half blood, and one a 3/4; two are ET daughters and one is a natural calf. If any of them sell for less than \$4,000 she'll be the first Pink offspring to sell under that mark. We don't think you'll be disappointed in any one of them or in the genetic potential or mating flexibility of their mother.

LOT 6 | MF VIOLET

Homozygous Black & Polled Purebred

Mr NLC Upgrade U8676

MF Bona Fide

Rhodes Blackcap Y89

MF Violet

Triple C El Poderoso Rey

MF Pink

MF Polly Pocket

Calved Dec. 10, 2015

Tattoo: C9W

ASA: 3099217

Adj Bwt: 75 Ratio: 99

Adj 205: 638 Ratio: 106

Starting bid: \$3,100

Final price: \$_____

Fall 2016 EPDs

	CE	BW	WW	YW	ADG	MCE	Milk	MWW	DOC	CW	YG	Marb	BF	REA	\$API	\$TI
EPD	9.0	1.2	68.6	108.7	0.25	11.8	23.3	57.6	11.4	36.5	-0.38	.27	-.048	1.15	\$133	\$76
RANK	55%	40%	25%	15%	5%	20%	35%	20%	40%	20%	25%	25%	75%	4%	30%	15%



Fall 2016 EPDs

	CE	BW	WW	YW	ADG	MCE	Milk	MWW	DOC	CW	YG	Marb	BF	REA	\$API	\$TI
EPD	9.4	0.5	77.5	128.7	0.32	10.7	18.9	57.6	9.6	47.5	-0.17	.38	-.002	0.98	\$138	\$82
RANK	65%	50%	5%	3%	2%	15%	70%	20%	80%	4%	75%	45%	85%	10%	30%	10%

LOT 7 | MF BREATHLESS

Homozygous Black & Polled 3/4 Blood

TNT Tuition U238
W/C United 956Y
Miss Werning 956W

MF Breathless

Triple C El Poderoso Rey
MF Pink
MF Polly Pocket

Calved Sept. 12, 2014

Tattoo: B65X

ASA: 2901653

Adj Bwt: 74 Ratio: ET

Adj 205: 720 Ratio: ET

Adj 365: 881 Ratio: ET

Starting bid: \$2,500

Final price: \$ _____

MF Breathless is the only heifer from Pink's first flush. If you can't look at her and tell she's a performance female, check out her breed-leading EPD predictions for WW, YW, ADG and CW. When we started looking for a mating to improve her both on paper and on foot, J Bar J Nightride seemed like a match made in heaven!

Here's a female that stacks performance on both sides of the pedigree backed by a winning cow family and carrying a bull calf that should be a home run. AI bred 1/17 to J Bar J Nightride then exposed to MF Bona Fide; confirmed 66 days safe to Nightride on 3/23. Don't miss an opportunity to own this package!



PVF Insight
Sire of Lot 5 & Lot 8A



MF/WEF Indigo
Full sib to Lot 5 & Lot 8A

The MF Pink mating to Pvf Insight clicked! This successful flush resulted in the Lot 5 heifer from 48 Creek, 48C Pink; MF/WEF Indigo, the \$4,000 heifer calf we purchased from Water's Edge in the Online Opportunity Sale being campaigned by Kendall this summer; and two stout bulls currently

LOT 8A | MF PINK HEIFER PREGNANCY

Homozygous Black & Polled SimAngus

from Water's Edge Farm, Franklin, TN

S A V Brilliance 8077
PVF Insight 0129
PVF Missie 790

SimAngus Heifer Calf Pregnancy

Triple C El Poderoso Rey
MF Pink
MF Polly Pocket

Heifer pregnancy due 12/28/16

Registered Angus Recip

Recipient's AAA: 16433526

Starting bid: \$2,500

Final price: \$ _____

PROJECTED MATING EPDs - MF Pink x Pvf Insight

CE	BW	WW	YW	MCE	Milk	CW	YG	Marb	REA	\$API	\$TI
11.9	0.30	68.0	116.0	11.7	28.0	40.0	-.34	0.33	1.15	\$135	\$76

at New Day in Missouri, MF Cobalt and H&S Crossroads, possibly the most complete herd sire prospect from the Pink donor to hit the ground to date! Here's a complete package neatly stowed in a Foundation registered, AAA daughter of S A V Net Worth. Not a lot of guess work in this deal!

LOT 8B | MF PINK PREGNANCY

Homozygous Black & Polled SimAngus

G A R Ingenuity
V A R Index 3282
Sandpoint Blackbird 8809

SimAngus Pregnancy

Triple C El Poderoso Rey
MF Pink
MF Polly Pocket

Pregnancy due 12/28/16

Registered Purebred Recip

Recipient's ASA: 2644922

Starting bid: \$2,500

Final price: \$ _____

PROJECTED MATING EPDs - MF Pink x V A R Index

CE	BW	WW	YW	MCE	Milk	CW	YG	Marb	REA	\$API	\$TI
11.5	-0.85	70.4	116.6	11.6	31.4	38.4	-.34	0.80	1.16	\$162	\$91



V A R Index
Sire of Lot 8B



MF Azalea, ASA 2644922
Purebred recip dam of Lot 8B

The Index mating intrigued us because it brings high predictions for carcass traits without sacrificing phenotype, and it stacks the proven, elite Angus cow family of 8809 and the MF Pink / Burtner "Virginia" cow family.

The projected mating EPDs are as balanced as we know how to make them, combining growth, maternal and carcass with a notable top 3% ranking for Marb, top 2% for REA, and top 1% for TI. The result could be special!

Once in a Blue Moon.



MF Alter Ego
Sire of Lot 9A & 9B

PROJECTED MATING EPDs - MF Yakira x MF Alter Ego

CE	BW	WW	YW	MCE	Milk	CW	YG	Marb	REA	\$API	\$TI
11.7	-0.90	60.3	101.7	10.1	21.8	29.8	-.30	.44	.89	\$138	\$74



S102W, ASA 2566744
Recipient dam of Lot 9A pregnancy



MF Yakira
Donor dam of Lot 9A & 9B

LOT 9A | MF YAKIRA PREGNANCY

Homozygous Black & Polled 3/4 Blood

MCM Top Grade 018X
MF Alter Ego
CircleT Antoinett Legacy

3/4 Blood Pregnancy

RAB-EGL Blue Moon 4407M
MF Yakira [DDF]
MF HB Loaded Dice N881

Pregnancy due 12/28/16
Registered Purebred Recip
Recipient's ASA: 2566744
Starting bid: \$1,800
Final price: \$_____

MF Yakira is the result of a planned mating that worked. When Chris saw the projected EPDs on paper that breeding season, he couldn't resist trying to make a female that might someday replace the N881 cow in our breeding program. Genetics are tricky business, and planned matings don't always result in the best possible outcome we imagine, but this particular day, something about this Blue Moon gave us cause to be optimistic.

LOT 9B | MF YAKIRA EMBRYOS

Homozygous Black & Polled 3/4 Blood Embryos

MCM Top Grade 018X
MF Alter Ego
CircleT Antoinett Legacy

3/4 Blood Embryos

RAB-EGL Blue Moon 4407M
MF Yakira [DDF]
MF HB Loaded Dice N881

3 #1 embryos, guaranteeing 1 pregnancy or 5 embryos & guaranteeing 2 pregnancies if work is done by a certified embryologist

Starting bid: \$300 each

Final price: \$_____

Backed by a cow family that has been in our herd for 25 years, Yakira is a perfect example of the complementarity of Angus and Simmental in an F1 hybrid. She perfectly blends the two sides of her pedigree into an ideally designed, balanced EPD female that has all the potential to make a lasting impression in any breeding program. We're excited about the successful flush to our own MF Alter Ego, and we can't wait to share the results!



A family without a black sheep.



CCR Frontier 0053Z
Sire of Lot 10

Lot 10 | MF DOMINIQUE

Homozygous Black & Homozygous Polled 3/4 Blood

MCC Daylite 0005
CCR Frontier 0053Z
CCR Ms 4013 Dura 0053X

MF Dominique

Triple C Invasion R47K
MF Unique
MF HB Loaded Dice N881

Calved Jan. 7, 2016

Tattoo: D81U

ASA: 3099239

Adj Bwt: 69 Ratio: 107

Adj 205: 578 Ratio: 96

Starting bid: \$5,000

Final price: \$ _____

Fall 2016 EPDs

	CE	BW	WW	YW	ADG	MCE	Mik	MWW	DOC	CW	YG	Marb	BF	REA	\$API	\$TI
EPD	12.4	0.6	57.2	83.3	0.16	9.9	17.3	45.9	10.7	20.4	-0.31	.28	-.021	0.92	\$133	\$68
RANK	35%	55%	65%	70%	75%	25%	85%	80%	60%	70%	35%	60%	65%	15%	35%	60%

There are always a handful of these heifer calves in the sale each fall we really don't want to part with. Occasionally, you might get another opportunity at some of them as breds down the road; typically, though, these are the females that make our next generation of replacements at Martin Farms. Some of the names that come to mind: MF Vanilla Bean, MF Pink, and MF Yakira, a maternal sister to the dam of this young lady.

MF Dominique stems from a cow family that has been a reliable and consistent part of our program for more than two decades. She is a sixth-generation breeding piece from the best branch of the family tree, N881. This cow family is proven to produce performance-oriented herd bulls and productive, functional females alike. Pay attention to Lots 9 through 14; these are grass roots females that will not disappoint you.



Lot 10, MF Dominique





Hook's Broadway 11B
Service sire of Lot 11



Lot 12 | MF UNIQUE

Homozygous Black & Polled Purebred

SRS J914 Preferred Beef
Triple C Invasion R47K
Hooks Karrie 47K

Calved Jan. 18, 2008

Tattoo: U881

ASA: 2445619

MF Unique

GW Lucky Dice 187H
MF HB Loaded Dice N881
MF HB Limit This

Adj Bwt: 85 Ratio: 91

Adj 205: 614 Ratio: 105

Starting bid: \$2,250

Final price: \$ _____

Fall 2016 EPDs

CE	BW	WW	YW	MCE	Milk	CW	YG	Marb	REA	\$API	\$TI
8.6	2.7	59.1	82.7	9.1	13.9	11.4	-.30	.07	.98	\$128	\$63

At first glance, this female may not overwhelm you on paper. Study her phenotype and her production record, and you start to separate the guys and gals who just breed cattle on paper from the real cattlemen who know how the bills get paid!

MF Unique is truly that, aptly named because of her Angus-like design as a young heifer. Backed by a powerful and productive cow family, U881 has maintained a calving interval of 366 days on seven calves, and she boasts a Stay EPD ranking in the top 2% of the breed. It's a proven fact that longevity is the #1 precursor of profitability. This is the kind that keeps the ranch in business!

Sometimes things get a little hectic around breeding season. Due to the timing of her standing heat, we decided U881 should be AI'd twice, and she was inadvertently bred to two bulls, Hook's Beacon and CCR Cowboy Cut. AI bred on 4/3 then exposed to MF Alter Ego and examined safe to AI on 7/23, so we'll pay to confirm the parentage. Either way, it ought to click!

Lot 11 | MF CROCUS

Homozygous Black & Polled Purebred

Hooks Taurus 24T
Hook's Yellowstone 97Y
Hooks Sheyenne 77S

Calved Jan. 11, 2015

Tattoo: C81U

ASA: 2953143

MF Crocus

Triple C Invasion R47K
MF Unique
MF HB Loaded Dice N881

Adj Bwt: 80 Ratio: 95

Adj 205: 665 Ratio: 97

Adj. 365: 775 Ratio: 91

Starting bid: \$2,250

Final price: \$ _____

Fall 2016 EPDs

CE	BW	WW	YW	MCE	Milk	CW	YG	Marb	REA	\$API	\$TI
11.7	1.4	62.5	85.6	10.1	19.9	22.5	-.35	.23	.88	\$139	\$71

MF Unique is the only female that fell into the "five years and over" category that we really didn't want to part with and don't have a daughter from to replace her in our herd. Because of that, we contemplated holding back one of these two, either Lot 10 or Lot 11 to be their mother's replacement. Ultimately, though, here they are!

With three N881 daughters in the herd as well as granddaughters of that matriarch, we felt we could dig a little deeper into the program and continue to offer genetics from the best cow families in the herd.

MF Crocus was a favorite among all the heifer calves last year as a calf. We're excited about the mating to the popular \$60,000 Hook's Broadway and although we haven't seen any Broadway calves yet, we're hearing good reports and we're eager to start seeing the proof in our own program!

Crocus was AI bred to Hook's Broadway on 3/17/16 and then exposed to MSR Great Plains. She was confirmed safe to the AI date on 5/16 and sells safe in calf due on or around 12/27/2016.



MF Upsy Daisy
Dam of Lot 13 pictured as a calf



Lot 14, MF Deep Dish
Maternal grandam of Lot 13

LOT 13 | MF DAISY DUKE

Homozygous Black & Polled SimAngus

Mytty In Focus
A A R Ten X 7008 S A
A A R Lady Kelton 5551

MF Daisy

SS Upscale
MF Upsy Daisy
MF HB Limit Up

Calved Jan. 1, 2016

Tattoo: D81B

ASA: 3099229

Adj Bwt: 75 Ratio: 99

Adj 205: 628 Ratio: 104

Starting bid: \$5,000

Final price: \$ _____



Fall 2016 EPDs

	CE	BW	WW	YW	ADG	MCE	Milk	MWW	DOC	CW	YG	Marb	BF	REA	\$API	\$TI
EPD	12.6	0.6	82.2	134.9	0.33	9.8	21.9	63.0	10.8	51.2	-0.29	.79	-.064	0.93	\$162	\$95
RANK	35%	55%	2%	1%	1%	25%	45%	4%	55%	2%	40%	3%	25%	15%	10%	1%

"Daisy" is another member of the N881 clan with her own bright future ahead. Her dam was chosen as a feature lot in our 2014 sale by a junior with a great eye for picking out a show winner; unfortunately, she proved to be a little more than he could handle, so we agreed to replace her, and that's how she ended up back in our replacement pen.

LOT 14 | MF DEEP DISH

Homozygous Black & Polled Purebred

LRS Preferred Stock 370C
SRS J914 Preferred Beef
SRS G733 Glimmer

MF Deep Dish

GW Lucky Dice 187H
MF HB Loaded Dice N881
MF HB Limit Up

Calved Jan. 14, 2006

Tattoo: S881

ASA: 2339199

Adj Bwt: 80 Ratio: 99

Adj 205: 587 Ratio: 107

Starting bid: \$1,500

Final price: \$ _____

Fall 2016 EPDs

CE	BW	WW	YW	MCE	Milk	CW	YG	Marb	REA	\$API	\$TI
9.8	2.5	64.0	95.6	10.6	20.2	30.5	-.29	0.00	0.90	\$122	\$65

MF Deep Dish is an own daughter of the performance matron, N881. Like her mother and every other member of this cow family, she has been as reliable as the sun rising in the East. After nine natural calves, she posts an average calving interval of 365 days and records an average REA ratio of 113 on two progeny scanned.

This young Ten X female is a brood cow in the making. Her pedigree stacks the predictability of one of the Angus breed's icon sires and a proven maternal powerhouse in our program. And how much fun are females with EPDs like these at planned mating time? This might be the most complete female we've offered lately.

LOT 14A | MF DELILAH

Homozygous Black & Polled Purebred

Mr NLC Upgrade U8676
MF Bona Fide
Rhodes Blackcap Y89

MF Delilah

SRS J914 Preferred Beef
MF Deep Dish
MF HB Loaded Dice N881

Calved Jan. 11, 2016

Tattoo: D81S

ASA: 3099216

Adj Bwt: 82 Ratio: 89

Adj 205: 600 Ratio: 100

Starting bid: \$1,500

Final price: \$ _____

PROJECTED MATING EPDs - MF Pink x V A R Index

CE	BW	WW	YW	MCE	Milk	CW	YG	Marb	REA	\$API	\$TI
9.1	2.7	69.4	106.1	9.3	21.5	37.0	-.35	.18	1.06	\$122	\$72

Deep Dish is one that is only available because of our commitment to this mature cow herd dispersal. She sells AI bred on April 4th to A A R Ten X then exposed to MF Alter Ego; she was confirmed safe to Ten X by ultrasound on 7/23. There's no reason this mating shouldn't click just like the one that produced the Lot 13 heifer out of S881's two-year-old mini-me, Upsy Daisy.

Lot 15 | MF/THF RHINESTONE

Homozygous Black & Polled Purebred

Hooks Taurus 24T
Hook's Yellowstone 97Y
Hooks Sheyenne 77S

MF/THF Rhinestone

SS Upscale X25
MF Uppity
Circle T Missy

Calved Sept. 11, 2014
Tattoo: B213
ASA: 2915747
Adj Bwt: 92 Ratio: 80
Adj 205: 747 Ratio: 105
Adj. 365: 892 Ratio: 104
Starting bid: \$2,500

Final price: \$ _____

Fall 2016 EPDs

CE	BW	WW	YW	MCE	Milk	CW	YG	Marb	REA	\$API	\$TI
7.7	3.4	73.4	106.0	7.6	24.6	37.6	-.38	.18	1.00	\$133	\$75

Rhinestone is a big-numbered, high performance female from another stellar cow family tracing to a full sister to Black Mick, Irish Black Knight and Red Brother. The top side of her dam's pedigree adds another layer of maternal prowess with the Magnetic Lady cow family at Sloup Simmentals.



B213 was AI bred on 1/17 to J Bar J Nightride and confirmed safe to the AI date by ultrasound on 3/23. This mating to the low birth weight, calving ease specialist, Nightride, should be a perfect match.

Lot 16 | MF/THF BETSY

Heterozygous Black, Double Polled Purebred

Dikemans Sure Bet
CCR Sure Nuff 6055Y
CCR Ms 4045 Time 7332T

MF/THF Betsy

3C Southbound W9350
MF Whippoorwill
Lady June U8

Calved Oct. 4, 2014
Tattoo: B8Z
ASA: 2915748
Adj Bwt: 72 Ratio: 106
Adj 205: 730 Ratio: 103
Adj. 365: 881 Ratio: 103
Starting bid: \$2,250

Final price: \$ _____

Fall 2016 EPDs

CE	BW	WW	YW	MCE	Milk	CW	YG	Marb	REA	\$API	\$TI
9.6	1.4	64.5	95.1	6.5	20.1	28.5	-.35	.27	.97	\$124	\$74

Betsy stems from a productive, high-performing genetic line of females, stacking two herd sires we carefully selected from two of the leading programs in the country, Cow Camp Ranch and 3C Simmental. CCR Sure Nuff was a flush mate to the \$19,000 sale topper, CCR Sure Fire, and 3C



Southbound is no stranger to our bull customers who have appreciated his sons for the past several years for their extra muscle and fast growth.

Betsy was AI bred to Hook's Broadway on 1/16 then exposed to MF Bona Fide; she was confirmed safe with a heifer calf by Broadway on 3/23.

Lot 17 | MF/THF BATGIRL

Homozygous Black & Polled 3/4 Blood

MCM Top Grade 018X
MF Alter Ego
CircleT Antoinett Legacy

MF/THF Batgirl

Ellingson Legacy M229
YON Witch Z15
Yon Witch X04

Calved Oct. 11, 2014
Tattoo: B15Y
ASA: 2915749
Adj Bwt: 72 Ratio: 106
Adj 205: 666 Ratio: 94
Adj. 365: 807 Ratio: 94
Starting bid: \$2,250

Final price: \$ _____

Fall 2016 EPDs

CE	BW	WW	YW	MCE	Milk	CW	YG	Marb	REA	\$API	\$TI
10.1	0.0	54.8	87.7	7.2	24.1	22.6	-.34	.33	.83	\$120	\$67

Batgirl is the first calf by Alter Ego out of a beautiful, feminine "Olie" daughter from the respected Yon program in South Carolina. She is clean-necked and long-bodied with a sound, moderate, functional design.



B15Y was AI bred on 1/17 to Hook's Yellowstone and then exposed to MF Bona Fide. She was confirmed safe to the AI date on 3/23 by ultrasound and sells eight months safe to Yellowstone.



Lot 18 | MF BUBBLEGUM

Double Polled, Double Black Purebred

Dikemans Sure Bet
IR Range Boss Y623
IR Ms Vienna U073
MF Bubblegum
SVF/NJC Built Right N48
Mipsy
MF Oh Boy

Calved Nov. 24, 2014
Tattoo: B331
ASA: 2939585
Adj. Bwt: 75
Adj. 205: 545
Starting bid: \$1,650
Final price: \$_____

Fall 2016 EPDs

CE	BW	WW	YW	MCE	Milk	CW	YG	Marb	REA	\$API	\$TI
11.4	-0.1	53.8	80.8	8.7	20.3	18.1	-.32	0.21	0.74	\$130	\$67

If you like females that are modest sized and efficient that don't cost a lot of money to maintain, you'll appreciate this Range Boss daughter. She should be productive in either a purebred or commercial scenario.

Bubblegum was AI bred on 1/18 to Hook's Yellowstone then pasture exposed to MF Bona Fide. She was confirmed to be 65 days safe in calf on 3/23 by ultrasound. Bubblegum sells safe in calf.

Lot 19 | WBC SSFC ANNIE B1

Double Polled, Double Black 3/8 Blood

from Wall Bros. Farm, Dickson & Slate Farms, Vanleer

Welshs Dew It Right067T
SSFC Martin Y 51
Rhodes Blackcap U94
WBC SSFC Annie B1
Y10 (Commercial Angus)

Calved Oct. 15, 2014
Tattoo: B1
ASA: 3074527
Adj. Bwt: n/a
Adj. 205: n/a
Starting bid: \$2,500
Final price: \$_____

Fall 2016 EPDs

CE	BW	WW	YW	MCE	Milk	CW	YG	Marb	REA	\$API	\$TI
10.0	1.0	58.7	86.8	5.2	20.0	23.1	-.29	0.30	0.67	\$105	\$64

Lots 19-22 are 3/4 sisters all bred up right together and due to calve shortly after sale day. Sired by a Dew It Right son and safe in calf to the calving ease specialist, Final Copy, these females look like peas in a pod and will match up as close as any group could. Exposed to Final Copy until 2/25, observed 1/16 and examined 7 months safe on 8/25. Due around 10/26/2016.

Lot 20 | WBC SSFC BALCK BETTY B2

Double Polled, Double Black 3/8 Blood

from Wall Bros. Farm, Dickson & Slate Farms, Vanleer

Welshs Dew It Right067T
SSFC Martin Y 51
Rhodes Blackcap U94
WBC SSFC Balck Betty B2
Y2 (Commercial Angus)

Calved Oct. 10, 2014
Tattoo: B2
ASA: 3074529
Adj. Bwt: n/a
Adj. 205: n/a
Starting bid: \$2,500
Final price: \$_____

Fall 2016 EPDs

CE	BW	WW	YW	MCE	Milk	CW	YG	Marb	REA	\$API	\$TI
10.0	1.0	58.7	86.8	5.2	20.0	23.1	-.29	0.30	0.67	\$105	\$64

Lots 19, 20, 21 and 22 were pasture exposed to TJ Final Copy until 2/25/2016; Lot 20 was observed in heat on 1/16/2016. All four heifers were confirmed safe by BioPRYN blood test on 3/3/16 and palpated on 8/25 to reconfirm status. Lot 20 was examined 7 months safe to Final Copy on 8/25; due to calve around 10/26/2016.

Lot 21 | WBC SSFC ANNIE B1

Double Polled, Double Black 3/8 Blood

from Wall Bros. Farm, Dickson & Slate Farms, Vanleer

Welshs Dew It Right067T
SSFC Martin Y 51
Rhodes Blackcap U94
WBC SSFC Roxy B3
Y4 (Commercial Angus)

Calved Oct. 15, 2014
Tattoo: B3
ASA: 3074531
Adj. Bwt: n/a
Adj. 205: n/a
Starting bid: \$2,500
Final price: \$_____

Fall 2016 EPDs

CE	BW	WW	YW	MCE	Milk	CW	YG	Marb	REA	\$API	\$TI
10.0	1.0	58.7	86.8	5.2	20.0	23.1	-.29	0.30	0.67	\$105	\$64

Pasture exposed to TJ Final Copy until 2/25/2016; observed in heat on 1/16/2016 and confirmed safe in calf on 3/3. Re-examined on 8/25 and determined to be 7 months safe in calf. Due to calve around 10/26/2016.

Lot 22 | WBC SSFC ROSIE B04

Double Polled, Double Black 3/8 Blood

from Wall Bros. Farm, Dickson & Slate Farms, Vanleer

Welshs Dew It Right067T
SSFC Martin Y 51
Rhodes Blackcap U94
WBC SSFC Balck Betty B2
Y15 (Commercial Angus)

Calved Oct. 20, 2014
Tattoo: B04
ASA: 3074533
Adj. Bwt: n/a
Adj. 205: n/a
Starting bid: \$2,500
Final price: \$_____

Fall 2016 EPDs

CE	BW	WW	YW	MCE	Milk	CW	YG	Marb	REA	\$API	\$TI
10.0	1.0	58.7	86.8	5.2	20.0	23.1	-.29	0.30	0.67	\$105	\$64

Pasture exposed to TJ Final Copy until 2/25/2016; observed in heat on 2/2/2016 and confirmed safe in calf on 3/3. Palpated on 8/25 and confirmed 7 months safe in calf to Final Copy; Due to calve around 10/26/2016.

Lot 23 | MF/THF Birdie

Homozygous Black, Double Polled Purebred

TNT Tuition U238
W/C United Y956
Miss Werning 956W

MF/THF Birdie

3C Southbound W9350
MF Black Pearl
MF Pearl

Calved Nov. 1, 2014

Tattoo: B53Z

ASA: 2915746

Adj Bwt: 70 Ratio: 108

Adj 205: 694 Ratio: 98

Adj. 365: 846 Ratio: 99

Starting bid: \$1,800

Final price: \$ _____

Fall 2016 EPDs

CE	BW	WW	YW	MCE	Milk	CW	YG	Marb	REA	\$API	\$TI
11.2	-0.4	69.6	111.2	8.1	19.1	35.6	-.18	0.43	0.85	\$135	\$78

This United daughter is a big, stout female with a balanced EPD proof across the board. She hails from a strong, productive cow family going back seven generations to the 1539F Galant daughter we brought in to the Martin Farms program back in 1979!



"Birdie" was AI bred to Hook's Broadway on 1/16 then exposed to MF Bona Fide and observed in heat on 2/10. She was confirmed safe to the pasture breeding date by ultrasound on 3/23 and sells safe in calf to Bona Fide.

Lot 24 | MF/WTR Ginger B31U

Double Polled Red Purebred

BOZ Redcoat
Ankonian Red Caesar
GFI Candace G51

MF/WTR Ginger B31U

Sweet C&S Cigar
MF Oh Boy
SC Wolfcreek Mahala

Calved Nov. 8, 2014

Tattoo: B31U

ASA: 2915750

Adj Bwt: 95 Ratio: NC

Adj 205: 550 Ratio: NC

Adj. 365: 709 Ratio: NC

Starting bid: \$1,800

Final price: \$ _____

Fall 2016 EPDs

CE	BW	WW	YW	MCE	Milk	CW	YG	Marb	REA	\$API	\$TI
2.0	4.7	70.5	101.4	8.6	22.2	36.9	-.31	-0.06	0.75	\$94	\$64

"Ginger" is a flashy, red daughter of Red Caesar back to the cow maker sire, BOZ Redcoat. Her dam is a big-footed, long-bodied, dark red female that consistently does a solid job every year.



B31U was AI bred to WS Prime Rib then exposed to MF Bona Fide and observed pasture bred to Bona Fide on 2/8. She was confirmed safe to the pasture date on 3/23 and sells safe in calf to the Upgrade son, Bona Fide.

Lot 25 | MF Hallmark

Homozygous Black & Polled SimAngus

S A V Bismarck 5682
TJ Makers Mark 215Y
TJ Jezebel 53J

MF Hallmark

TJ Sharper Image 809U
WBC Sharper Z38
Miss SF Windy W16

Calved Oct. 30, 2014

Tattoo: B38Z

ASA: 2915744

Adj Bwt: 75 Ratio: 100

Adj 205: 629 Ratio: 99

Adj. 365: 730 Ratio: 97

Starting bid: \$1,800

Final price: \$ _____

Fall 2016 EPDs

CE	BW	WW	YW	MCE	Milk	CW	YG	Marb	REA	\$API	\$TI
13.4	0.4	76.3	125.5	10.9	22.9	45.4	-.14	0.50	0.79	\$149	\$84

MF Hallmark is sired by the now-deceased Makers Mark, a sire that has been very popular since his first proof have become available. Her high-octane growth numbers are worth noticing, but so is the rest of a nicely balanced EPD profile balancing calving ease, maternal, and carcass potential.



B38Z was pasture exposed to MF Bona Fide until 3/23 and then exposed to MSR Great Plains until 5/16/2016 when she checked 60 days safe in calf. We didn't observe a breeding to either bull so we can't guarantee the sire, but we'll gladly pay to confirm the calf's parentage if necessary.



This big-ribbed, broody, blaze-faced heifer was an easy pick from the Slate Farms replacement pen. We wanted to give you an idea what she looks like, but trust us when we say this picture doesn't do her justice!



Cool Look B66 is a real brood cow prospect with a stacked pedigree and the numbers to back her up. Her EPD profile combines calving ease, growth performance, maternal strength, and carcass merit in a balanced package with a top 10% API of \$154. Back to the Slate Farms donor, Lucinda R92, these Rhodes cattle are practical, real-world females that sure work in fescue country. They'll do a good job in almost any scenario where you expect

LOT 28 | SSFC ZEKE C284L

Double Black, Double Polled Purebred
from Slate Farms & Cattle Co., Vanleer

CLO LTS Entourage 72T	Calved Jan. 1, 2015
Simme Valley Zeke	Tattoo: C284L
Simme Valley Spicy As U	ASA: 3044510
SSFC Zeke C284L	Adj Bwt: 66 Ratio: 92
GW Lucky Man 644N	Adj 205: 533 Ratio: 102
MF Winter	Starting bid: \$2,500
MF Jet Balance P28	Final price: \$ _____

Fall 2016 EPDs

CE	BW	WW	YW	MCE	Milk	CW	YG	Marb	REA	\$API	\$TI
15.1	-1.7	48.7	71.6	14.6	24.2	10.2	-.37	.12	0.75	\$127	\$66

This young female comes from a heavy milking, hard working cow family. She sells pasture exposed to TJ Final Copy from 2/16 until 5/15, observed on 2/29/2016 and confirmed 5-6 months safe in calf on 8/25.

LOT 26 | SSFC EASEY KEEPER B090

Double Black, Double Polled SimAngus
from Slate Farms & Cattle Co., Vanleer

Flying B Cut Above	Calved Dec. 1, 2014
FKS Fat Butt Z015	Tattoo: B090
MS SCF Dream Fortune 911	ASA: 3141480
SSFC Easey Keeper B090	Adj. Bwt: n/a
T90 (Commercial Angus)	Adj. 205: n/a
	Starting bid: \$2,500
	Final price: \$ _____

Fall 2016 EPDs

CE	BW	WW	YW	MCE	Milk	CW	YG	Marb	REA	\$API	\$TI
9.2	2.0	63.8	92.6	5.3	21.0	27.9	-.11	0.22	0.42	\$108	\$65

B090 was pasture exposed to our Shear Force son from Hill Top Simmental, HTLS Milo (ASA 2900721) until 5/15 and observed bred on 3/9/2016. She was confirmed 5 months safe to Milo on 8/25 and sells safe in calf.

LOT 27 | CVLS/SSFC COOL LOOK B66

Homozygous Black & Polled 3/4 Blood
from Slate Farms & Cattle Co., Vanleer

GW Lucky Man 644N	Calved Dec. 7, 2014
GW Lucky Boy 252U	Tattoo: B66
GW Miss New Deal 814TS	ASA: 2939556
CVLS/SSFC Cool Look B66	Adj. Bwt: 77 Ratio: 92
Ellingson Legacy M229	Adj. 205: n/a
CVLS SSFC So Cool 266Z	Starting bid: \$3,000
Rhodes Lucinda R92	Final price: \$ _____

Fall 2016 EPDs

CE	BW	WW	YW	MCE	Milk	CW	YG	Marb	REA	\$API	\$TI
16.1	0.8	68.7	107.6	10.4	19.9	35.1	-.27	0.42	0.88	\$154	\$79

your cows to earn their keep.

Lot 27 was pasture exposed to the proven calving ease herd sire, TJ Final Copy, until 5/15/16. She was observed on 3/1 and confirmed 5 months safe in calf on 8/25. This is the kind of female that will keep you in the cow business!

LOT 29 | SSFC ZEKE B50L

Double Polled, Double Black 3/8 Blood
from Slate Farms & Cattle Co., Vanleer

CLO LTS Entourage 72T	Calved Dec. 6, 2014
Simme Valley Zeke	Tattoo: B50L
Simme Valley Spicy As U	ASA: 3044505
SSFC Zeke B50L	Adj. Bwt: 63 Ratio: 97
GW Lucky Dice 187H	Adj. 205: 509 Ratio: 98
Rhodes Elbina X50	Starting bid: \$2,500
Rhodes Elbina 582	Final price: \$ _____

Fall 2016 EPDs

CE	BW	WW	YW	MCE	Milk	CW	YG	Marb	REA	\$API	\$TI
15.8	-2.3	50.0	82.2	12.8	21.8	16.0	-.30	0.25	0.75	\$148	\$67

Another bred heifer going back to the good Rhodes cattle and out of a Lucky Dice daughter. These heifers are bred to be productive, commercial-oriented and problem free. Exposed to TJ Final Copy from 2/16 until 5/15 and observed on 3/4/2016 then confirmed 5 months safe on 8/25.

Lot 30 | SSFC Zeke B57L

Double Black, Double Polled Purebred
from Slate Farms & Cattle Co., Vanleer

CLO LTS Entourage 72T	Calved Dec. 23, 2014
Simme Valley Zeke	Tattoo: B57L
Simme Valley Spicey As U	ASA: 3044509
SSFC Zeke B57L	Adj Bwt: 58 Ratio: 105
Nichols Manifest T79	Adj 205: 559 Ratio: 107
CVLS/SSFC Hum-Dinger Z57	Starting bid: \$2,500
Diamond D Hum-11G 2X	Final price: \$ _____

Fall 2016 EPDs

CE	BW	WW	YW	MCE	Milk	CW	YG	Marb	REA	\$API	\$TI
16.5	-2.8	54.1	82.7	15.3	23.0	15.2	-.32	0.14	0.78	\$137	\$71

Speaking of cow family, the third dam of B57L is the Miss Kansas K 11G, one of the most prolific donors in the Simmental breed. Lot 30 sells exposed to TJ Final Copy from 2/16 until 5/15, observed on 3/9 and confirmed 5 months safe in calf on 8/25.

Lot 32 | MF CHLOE

Homozygous Black & Polled Purebred

Ellingson Legacy M229	Calved Jan. 1, 2015
Mr NLC Upgrade U8676	Tattoo: C13Z
Ms NLC Mojo S6119 B	ASA: 2953129
MF Chloe	Adj Bwt: 74 Ratio: 103
TNT Tanker U263	Adj 205: 691 Ratio: 101
MF Zoey	Adj. 365: 830 Ratio: 98
MF Sushi	Starting bid: \$1,800
	Final price: \$ _____

Fall 2016 EPDs

CE	BW	WW	YW	MCE	Milk	CW	YG	Marb	REA	\$API	\$TI
7.8	0.7	70.5	103.3	10.0	19.5	32.1	-.53	0.26	1.27	\$135	\$78

The real cowboys will find this female. She's a practical, common sense beef heifer with a pedigree designed to make her what she is; TNT Tanker, Preferred Beef, Nichols Legacy, 3C Wally, and Irish Black Knight are the first five generations, including the Lchmn "Montana" cow Chris purchased from Leachmans back in 2002 as a young heifer on her dam's side.

Lot 33 | MF CHARISMA

Homozygous Black, Double Polled Purebred

Ellingson Legacy M229	Calved Jan. 14, 2015
Mr NLC Upgrade U8676	Tattoo: C520
Ms NLC Mojo S6119 B	ASA: 2953135
MF Charisma	Adj Bwt: 84 Ratio: 90
RIV Black Choctaw 866H	Adj 205: 708 Ratio: 103
MSR 5520R of 2094M Choc	Adj. 365: 859 Ratio: 101
MSR 2094M of J1018 Drive	Starting bid: \$1,800
	Final price: \$ _____

Fall 2016 EPDs

CE	BW	WW	YW	MCE	Milk	CW	YG	Marb	REA	\$API	\$TI
7.7	2.1	70.7	101.9	8.8	17.4	33.3	-.44	0.26	1.06	\$129	\$76

MF Charisma is a flashy, clean made heifer with plenty of style and balance. Chris selected her dam as an open heifer calf from a production sale at Moser's in Kansas, and she's been a consistent and productive member of the MF program year in and year out.

Lot 31 | SSFC Zeke B143L

Double Polled, Double Black Purebred
from Slate Farms & Cattle Co., Vanleer

CLO LTS Entourage 72T	Calved Nov. 30, 2014
Simme Valley Zeke	Tattoo: B143L
Simme Valley Spicey As U	ASA: 3044504
SSFC Zeke B143L	Adj. Bwt: 58 Ratio: 105
Welshs Dew It Right 067T	Adj. 205: 457 Ratio: 88
CVLS O U Got Me 143Y	Starting bid: \$2,500
CVLS Gotta Have Her 927W	Final price: \$ _____

Fall 2016 EPDs

CE	BW	WW	YW	MCE	Milk	CW	YG	Marb	REA	\$API	\$TI
16.1	-2.6	45.5	63.2	11.8	18.4	3.8	-.41	0.13	0.81	\$145	\$63

Another high dollar API female safe in calf to Final Copy. B143L was pasture exposed from 2/16 until 5/15/2016, observed on 3/9 and examined 5 months safe to Final Copy on 8/25/16. This is a nice, uniform set of bred females bred up early to the Final Copy bull.



Stacking the performance of Upgrade was a logical move in building a pedigree to cater to every aspect of the commercial cattle industry and resulted in a brood cow prospect with balanced EPDs across the board that ranks in the top 1% for REA. Chloe sells AI bred to Hook's Broadway on 3/17 then exposed to MSR Great Plains and ultrasounded safe to the AI date on 5/16.



C520 is another Upgrade daughter with a valid set of numbers. She sells pasture exposed to MSR Great Plains and examined 55-60 days safe on 7/23/16. Her dam also sells as part of our mature cow herd dispersal as Lot 39.



LOT 34 | MF BIRTHSTONE

Double Polled, Double Black Purebred

Nichols Manifest T79
MF Yosemite
LVL Lchmn Montana

MF Birthstone

PVF-BF BF26 Black Joker
Circle M Gracie
LVL Garnet

Calved Dec. 3, 2014

Tattoo: B53

ASA: 2922801

Adj. Bwt: 75 Ratio: NC

Adj. 205: 605 Ratio: NC

Adj. 365: 766 Ratio: NC

Starting bid: \$1,800

Final price: \$ _____

Fall 2016 EPDs

CE	BW	WW	YW	MCE	Milk	CW	YG	Marb	REA	\$API	\$TI
5.6	2.3	59.3	87.4	10.3	25.5	25.3	-.29	0.01	0.73	\$110	\$63

This heifer descends from the same cow family as Lot 23, tracing back to the 1539F cow, a 3/4 blood, red blaze faced daughter of the foundation sire, Galant, that was way, way ahead of her time in terms of the kind of cow she was. I doubt there's a cow family still associated with our breeding

program that has any deeper roots than this one! MF Birthstone was AI bred to Hook's Broadway on 3/17 then exposed to MSR Great Plains until 5/16 when she checked 35 days safe in calf. We don't have a pasture date, but we're calling her safe to Great Plains and due to calve in January of 2017.



LOT 35 | MISS PVF I HEAR THE RAIN

Homozygous Black, Double Polled 3/4 Blood

Foundation 724N
K-LER Make It Rain
HCC/CSC Beyonce

Miss PVF I Hear The Rain

GWS/SCF Rendition
Miss WEF Black Dahlia
DAB Lady Grace 2147

Calved Jan. 11, 2015

Tattoo: CY54

ASA: 3013957

Adj. Bwt: 94 Ratio: NC

Adj. 205: 551 Ratio: NC

Starting bid: \$2,100

Final price: \$ _____

Fall 2016 EPDs

CE	BW	WW	YW	MCE	Milk	CW	YG	Marb	REA	\$API	\$TI
1.0	3.2	57.4	87.1	5.5	23.2	26.6	-.18	0.20	0.68	\$87	\$60

We selected "Rain" through the Agribition sale where she was consigned by her breeder, Emily Ivey. This heifer's mother originated in the Water's Edge program and was out of a super sound, moderate framed, deep-sided registered Angus cow Chris inherited when he started managing the WEF herd.

Here's a little different pedigree with a twist of show potential. This young female gives her buyer some options: use her in a seedstock operation, in a club calf program, or in a commercial scenario. She was pasture bred to MSR Great Plains on 4/12/16 and has been confirmed safe to that breeding date.



LOT 36 | "MACY"

Polled/Scurred Commercial Black Baldy Heifer
from Kendall Martin, Petersburg, TN

Registered Polled Hereford

1/2 HP 1/4 AN 1/4 GV

Registered Gelbvieh Balancer

Calved Dec. 1, 2014

Commercial

ASA: (3143710)

Starting bid: \$1,750

Final price: \$ _____

Fall 2016 EPDs

CE	BW	WW	YW	MCE	Milk	CW	YG	Marb	REA	\$API	\$TI

"Macy" is a growthy, broody, black baldy commercial heifer with a lot of cow potential. This retired show heifer is sired by the Champion and high-selling Hereford bull from the 2014 Tennessee Beef Agribition. Her dam is a registered Gelbvieh-Balancer, and she was an Agribition Champion as well.

Macy was AI bred to Circle Old School on 5/5 then exposed to MSR Great Plains on 5/10. She was ultrasounded approximately 60 days bred on 5/23, so we're calling her safe to Great Plains. The resulting calf will be eligible for registration with ASA as a 1/4 blood Simmental.



LOT 37 | A&T KATIE

Homozygous Black, Double Polled Purebred

CNS Dream On L186
SS Tradition T648
Swain Emily 327N

Calved Dec. 15, 2010

Tattoo: X40

A&T Katie

ASA: 2612619

Ankonian Red Caesar
Teddy Bear
D&T Independence Penny

Starting bid: \$1,400

Final price: \$_____

Fall 2016 EPDs

CE	BW	WW	YW	MCE	Milk	CW	YG	Marb	REA	\$API	\$TI
7.1	3.0	62.1	87.2	11.2	25.2	26.0	-30	0.08	0.69	\$119	\$65

Katie is a hard-working, heavy-milking female that raised an ET calf this year and did an exceptional job. She sells pasture exposed to MF Alter Ego, bred on 4/5 and confirmed 3 1/2 months safe in calf on 7/23. She's due to calve around January 15, 2017.



LOT 39 | MSR 5520R OF 2094M CHOC

Homozygous Black, Double Polled Purebred

ER Black Cisco 532C
RIV Black Choctaw 866H
ER Miss MK79 43B

Calved Feb. 14, 2005

Tattoo: 5520R

MSR 5520 of 2094M Choc

ASA: 2283046

HC Power Drive 88H
MSR 2094M of J1018 Drive J1018

Starting bid: \$1,400

Final price: \$_____

Fall 2016 EPDs

CE	BW	WW	YW	MCE	Milk	CW	YG	Marb	REA	\$API	\$TI
11.3	-0.1	53.6	68.6	12.9	17.5	10.2	-31	0.09	0.60	\$123	\$64

5520R is a consistent and reliable producer. She was examined 80 days safe to MF Alter Ego on 7/23 and she has worked well as an ET recip. She records 7@104 Brth; 7@101 Wean; 2@106 IMF; 2@107 REA.



LOT 38 | MF SWEET N LOW

Homozygous Black, Scurred Purebred

SRS J914 Preferred Beef
Triple C Invasion R47K
Hooks Karrie 47K

Calved Sept. 10, 2007

Tattoo: T63M

MF Sweet N Low

ASA: 2439973

HC Power Drive 88H
Sweet Pea
Triple C Sweethart B397

Starting bid: \$1,400

Final price: \$_____

Fall 2016 EPDs

CE	BW	WW	YW	MCE	Milk	CW	YG	Marb	REA	\$API	\$TI
9.7	0.0	53.7	76.5	7.4	21.3	15.4	-32	0.15	0.72	\$143	\$66

Lot 38 maintains a 355-day calving interval on six calves with one recorded at 109 for IMF. This cow has the potential to raise a really good one. She was AI bred to Hook's Broadway on 3/31 then exposed to MF Alter Ego and checked 95 days safe on 7/23.



LOT 40 | MF SUSHI

Homozygous Black & Polled Purebred

LRS Preferred Stock 370C
SRS J914 Preferred Beef
SRS G733 Glimmer

Calved Jan. 12, 2006

Tattoo: S113

MF Sushi

ASA: 2339179

Nichols Legacy G151
LVL Lchmn Montana
Lchmn Blk Baldy E7013

Starting bid: \$1,250

Final price: \$_____

Fall 2016 EPDs

CE	BW	WW	YW	MCE	Milk	CW	YG	Marb	REA	\$API	\$TI
12.4	-0.8	49.7	68.0	12.7	23.8	9.2	-35	0.22	0.63	\$140	\$67

AI'd to Long's Shear Pleasure on 3/28 then exposed to MF Alter Ego. She was confirmed 117 days safe to Shear Pleasure on 7/23. She records a 366 day calving interval with 9@104 Brth; 8@103 Wean; 1@105 Year.



THE WILLIAM KENNETH AMBROSE MEMORIAL HEIFER SCHOLARSHIP



The William Kenneth Ambrose Memorial Heifer Scholarship is a program designed to foster an opportunity for growth and development of youth interested in agriculture, to encourage youth involvement in the beef cattle project, and to give industry youth an opportunity to express creative ideas.

Applications can be acquired by request to martin.farms@yahoo.com or by visiting MartinFarmsBeef.com > Scholarship. Entries must include a project outlined in the application, and the application should clearly demonstrate enthusiasm, involvement, experience and support. Finalists will be chosen based on communicated interest and involvement in the beef industry and will be invited to Martin Farms for interviews on Friday, September 23, 2016 where three scholarships will be awarded.

Each scholarship will consist of \$1,500 toward the purchase of a weaned, registered Simmental or SimAngus heifer calf from Martin Farms, Slate Farms or Water's Edge Farm. Recipients will choose a heifer for the value of the voucher or in some cases, have an opportunity to use their scholarship with additional monies to purchase a different heifer of greater value from the donor. Alternates will receive a credit voucher redeemable toward the purchase of any animal at the Martin Farms' Open House at the Farm Sale on Saturday, September 24, 2016.

Scholarship recipients will be chosen by a panel of judges based on scores in four separate categories:

- 1) The application, 20 points
- 2) The project for entry, 30 points
- 3) Finalist interviews, 30 points
- 4) The remaining 20 points of the 100 point total will be derived from the judges' perception of how the applicant will use the scholarship to develop his or her interests in the beef industry.

Finalist interviews will take place at Martin Farms in Lyles, Tennessee beginning at 2:00 p.m. on Friday, September 23. All finalists and their families are invited to stay for supper courtesy of Jane Ambrose-Herron and State Farm Insurance. Scholarships will be awarded on Friday evening, and winners will make their selections Friday night before the sale on Saturday.

In addition to scholarships to purchase heifers, each scholarship recipient will receive 500 pounds of feed courtesy of Performance Feeds. Each scholarship also includes three units of semen from one of the donor's selected herd sires, including bulls like MF Alter Ego, 3C Southbound, Gibbs Tux & Tails and TJ Final Copy.

Alternates will receive a credit voucher toward the purchase of any animal in the Open House at the Farm sale on Saturday, September 24. Funds raised through an online auction hosted by DP Online Sales on Tuesday, September 20 and a silent auction held Friday, September 23 at the sale site will be divided among the alternates who purchase an animal on Saturday. In addition to Performance Feeds and Jane Ambrose-Herron State Farm, we'd like to thank Farm Credit Mid America and John West, our Mix 30 Liquid Feed dealer, for their generous support of the heifer scholarship program. We also owe a debt of gratitude to our business partners whose professional guidance supports our program's genetic progress and who have stepped up to help make this semen auction possible: Stuart James with ABS Global; Barry Ellis Bovine Services; Robert Dragland from Select Sires; Jared Wareham & Cattleman's Choice Genetics; and Kris Gulish, Laurel Hill Cattle Co.

Finally, we can't forget the generosity of our friends and partners, Slate Farms & Cattle Co. and Water's Edge Farm, for contributing additional scholarships to support and expand this program. Your generous and continued support of this program is a reminder of Kenneth's commitment to the future of our industry. I wish Kenneth was here to be a part of this.



Donald Jackson
615-598-0828



Tim Petty | Diane Baker | Karen Seals
615-446-5133



John West
615-418-2206



Jane Ambrose-Herron, Agent
931-729-3310
www.janeaherron.com



Stuart James
618-697-1316



Robert Dragland
931-637-1103



LAUREL HILL CATTLE CO.
Kris Gulish 731-336-1085



Barry Ellis || 615-268-3704



Jill & Jared Wareham • 417-309-0062 • Lowry City, Missouri

LOT 41 | MF DEEDEE

Homozygous Black & Polled SimAngus

TNT Tuition U238
W/C United 956Y
Miss Werning 956W

MF DeeDee

LFI Dew It Again W269
Rhodes Eldina Y130
Rhodes Eldina 9109

Calved Jan. 1, 2016
Tattoo: D130
ASA: 3099238
Adj Bwt: 66 Ratio: 111
Adj 205: 570 Ratio: 95
Docility score: 1
Starting bid: \$3,000

Final price: \$ _____

Fall 2016 EPDs

CE	BW	WW	YW	MCE	Milk	CW	YG	Marb	REA	\$API	\$TI
12.3	-1.0	68.7	113.1	8.3	19.7	36.1	-.07	0.90	0.68	\$163	\$90

DeeDee is a full sister to a featured heifer calf in our 2015 sale. The United mating really clicks on this Y130 cow, and the numbers look like something we sat down at the kitchen table and dreamed up!



This heifer may have more style and balance than her sister that's in our replacement pen. We think she has a world of potential for any breeding scenario you want, so help yourself. This one is a complete package!

LOT 42 | MF DELTA DAWN

Homozygous Black & Polled SimAngus

MCC Daylite 0005
CCR Frontier 0053Z
CCR Ms 4013 Dura 0053X

MF Delta Dawn

TJ Sharper Image 809U
WBC Sharp Gal Z35
Miss SF Mina W09

Calved Jan. 2, 2016
Tattoo: D35Z
ASA: 3099245
Adj Bwt: 70 Ratio: 106
Adj 205: 571 Ratio: 95
Docility score: 2
Starting bid: \$3,000

Final price: \$ _____

Fall 2016 EPDs

CE	BW	WW	YW	MCE	Milk	CW	YG	Marb	REA	\$API	\$TI
13.3	0.4	63.9	100.2	10.4	20.5	30.3	-.17	0.46	0.77	\$142	\$75

This is another heifer calf that's the product of a mating we repeated based on how good we thought the first one was! Like Lot 41, her full sister is in our replacement pen which is where this one should be!



Delta Dawn is a soft-middled, deep sided heifer that looks like a brood cow. Her mother is a bigger framed, stout made Sharper Image daughter we purchased from Wall Bros. through a previous Open House sale.

LOT 43 | MISS WEF DELIGHTFUL

Homozygous Black, Double Polled 5/8 Blood

from Water's Edge Farm, Franklin, TN

GW Premium Beef 021TS
GW Robust 605Z
GW Miss GPRD 123X

Miss WEF Delightful

S A V Bismarck 5682
HPF Ms Beautiful A006
HPF Ms Beautiful S054

Calved Jan. 8, 2016
Tattoo: D06A
ASA: 3104215
Adj Bwt: 92 Ratio: 90
Adj 205: 628 Ratio: 103
Docility score: 2
Starting bid: \$2,500

Final price: \$ _____

Fall 2016 EPDs

CE	BW	WW	YW	MCE	Milk	CW	YG	Marb	REA	\$API	\$TI
11.8	2.2	77.4	121.9	4.9	19.5	45.6	-.33	0.41	1.08	\$128	\$80

This big-numbered Robust daughter from Water's Edge is out of a female we selected from the Hudson Pines Living Legacy Sale. She blends the style and look of the popular Beautiful cow family with production-



HPF Ms Beautiful A006
Dam of Lot 43

GW Robust
Sire of Lot 43

oriented genetics of GW Robust from the commercially driven Gateway program. Here's a homozygous black female with the genetic potential to produce the kind of herd bull prospects that bring a lot of money!



Grandam of Lot 44
PRS Spring Velvet X126

Lot 44 | MF DIXIE CHICK

Homozygous Black, Double Polled Purebred

GW Premium Beef 021TS
GW-WBF Substance 820Y
GW Miss Maternal 558P
MF Dixie Chick
CNS Pays To Dream T759
Kenco Spring Velvet
PRS Spring Velvet X126

Calved Jan. 2, 2016
Tattoo: DB22
ASA: 3099215
Adj Bwt: 84 Ratio: 87
Adj 205: 616 Ratio: 102
Docility score: 3
Starting bid: \$1,500
Final price: \$_____

Fall 2016 EPDs

CE	BW	WW	YW	MCE	Milk	CW	YG	Marb	REA	\$API	\$TI
10.6	3.1	72.6	112.8	9.0	18.0	41.6	-23	0.66	0.79	\$151	\$85

Dixie Chick is a striking, blaze-faced Substance daughter with high growth predictions and top 1% estimates for Marb EPD and \$TI plus top 5% \$API. Her grandam is the the Clover Valley donor, Spring Velvet X126.

Lot 45 | MF DEMI

Homozygous Black & Polled 3/4 Blood

Nichols Manifest T79
MF Straightforward Y9
MF Pink
MF Demi
TNT Dual Focus T249
Elbina Y66
Rhodes Elbina X66

Calved Jan. 12, 2016
Tattoo: DY66
ASA: 3099227
Adj Bwt: 74 Ratio: 100
Adj 205: 632 Ratio: 105
Docility score: 2
Starting bid: \$1,500
Final price: \$_____

Fall 2016 EPDs

CE	BW	WW	YW	MCE	Milk	CW	YG	Marb	REA	\$API	\$TI
11.7	1.2	72.5	118.8	10.9	19.1	42.6	-14	0.39	0.78	\$141	\$79

Demi is a maternal half sister to our lead-off herd sire prospect selling as Lot 53. She is out of a super nice Dual Focus daughter and sired by the MF Pink son, Straightforward. She combines strong growth and carcass tabulations with an All Purpose Index in the top 25% of the breed.

Lot 46 | MF DOLLY

Homozygous Black & Polled 5/8 Blood

Mr NLC Upgrade U8676
MF Bona Fide
Rhodes Blackcap Y89
MF Dolly
GW Lucky Man 644N
Rhodes Mina Z78
Rhodes Mina 429

Calved Jan. 21, 2016
Tattoo: D78Z
ASA: 3099237
Adj Bwt: 72 Ratio: 103
Adj 205: 603 Ratio: 100
Docility score: 2
Starting bid: \$1,500
Final price: \$_____

Fall 2016 EPDs

CE	BW	WW	YW	MCE	Milk	CW	YG	Marb	REA	\$API	\$TI
11.7	1.1	70.9	115.4	8.9	21.2	40.5	-27	0.63	1.02	\$145	\$83

We purchased this heifer's dam through Steve Slate's Female Select Sale. As a yearling, she posted extreme scan data, ratioing 135 for IMF and 130 for REA. Her first heifer calf by Bona Fide compiles a nice set of EPDs with top 10% predictions for Year, ADG, Marb, REA and \$TI.

Lot 47 | MF DIMPLES

Homozygous Black & Polled 5/8 Blood

Mr NLC Upgrade U8676
MF Bona Fide
Rhodes Blackcap Y89
MF Dimples
PRS Blazin Hot W192
Rhodes Elbina Z76
Rhodes Elbina 810

Calved Feb. 1, 2016
Tattoo: D76Z
ASA: 3099218
Adj Bwt: 68 Ratio: 108
Adj 205: 550 Ratio: 91
Docility score: 2
Starting bid: \$1,500
Final price: \$_____

Fall 2016 EPDs

CE	BW	WW	YW	MCE	Milk	CW	YG	Marb	REA	\$API	\$TI
12.0	0.0	66.9	104.4	9.4	18.6	32.1	-21	0.39	0.86	\$135	\$75

Kara Stofel of Culleoka selected a maternal half sister to Dimples last year as a winner of the Kenneth Ambrose Heifer Scholarship. Their dam is a nice patterned Blazin Hot daughter that passes on her fault-free structure to here daughters. Dimples presents a balanced EPD profile with top 30% \$ indexes.

Lot 48 | MF DEIDRA

Homozygous Black, Double Polled Purebred

Mr NLC Upgrade U8676
MF Bona Fide
Rhodes Blackcap Y89
MF Deidra
SVF Steel Force S701
BFD Steel Faith Z124
BFD Faith X58

Calved Jan. 18, 2016
Tattoo: D124
ASA: 3099242
Adj Bwt: 74 Ratio: 100
Adj 205: 664 Ratio: 110
Docility score: 3
Starting bid: \$1,500
Final price: \$_____

Fall 2016 EPDs

CE	BW	WW	YW	MCE	Milk	CW	YG	Marb	REA	\$API	\$TI
8.2	1.7	73.7	111.9	7.3	17.2	38.9	-36	0.18	1.11	\$120	\$76

Deidra had a maternal sister by Ten X in our top cut of open heifers last year. The genetics and EPD package here are right. This January prospect posts top 10% EPDs for YW and ADG and a top 5% prediction for REA.

LOT 49 | MF DORY

Homozygous Black & Polled Purebred

MCM Top Grade 018X
MF Alter Ego
CircleT Antoinett Legacy

MF Dory

TNT Tanker U263
MF Zoey
MF Sushi



Calved Mar. 2, 2016
Tattoo: D13Z
ASA: 3099225
Adj Bwt: 81 Ratio: 91
Adj 205: 585 Ratio: 97
Docility score: 3
Starting bid: \$1,500
Final price: \$ _____

Fall 2016 EPDs

CE	BW	WW	YW	MCE	Milk	CW	YG	Marb	REA	\$API	\$TI
6.9	-1.2	61.4	96.1	12.0	20.8	29.2	-.41	0.23	0.98	\$129	\$71

Being the youngest heifer in the sale, this black baldy Alter Ego daughter from a top cow family just needs a little extra time. She comes with a balanced EPD profile with \$ values that rank in the top third of the breed.

LOT 51 | MISS WEF CHEERS

Homozygous Black & Polled SimAngus

Long's Shear Pleasure
Gibbs 1084Y Tux & Tails
Gibbs 7241T Sm Bet L138

Miss WEF Cheers

Dikemans Sure Bet
Gibbs 9251W Pride 1608
Sitz Pride 1608



Calved Dec. 24, 2015
Tattoo: C251
ASA: 3104206
Adj Bwt: 80 Ratio: 101
Adj 205: 544 Ratio: n/a
Docility score: 2
Starting bid: \$1,500
Final price: \$ _____

Fall 2016 EPDs

CE	BW	WW	YW	MCE	Milk	CW	YG	Marb	REA	\$API	\$TI
9.2	1.6	63.3	96.2	4.8	20.5	29.6	-.40	0.32	1.03	\$120	\$71

This heifer's dam is a heavy-milking Sure Bet daughter out of a Traveler 6807 cow. She works hard and raises a top calf, including one bull that sold for \$4,600 at the Cullman Bull Test a couple years back. She's a fertile cow that works as an ET recip as well and also raised a \$10,000 ET bull last year.

LOT 52 | MISS WEF KOALA

Double Polled Smoke-colored 5/8 Blood

TNT Tuition U238
W/C United 956Y
Miss Werning 956W

Miss WEF Koala

3C Southbound W9350
Smoke & Mirrors
Lady June R15



Calved Feb. 3, 2016
Tattoo: D15Y
ASA: 3104202
Adj Bwt: 79 Ratio: 106
Adj 205: 590 Ratio: 97
Docility score: 2
Starting bid: \$1,500
Final price: \$ _____

Fall 2016 EPDs

CE	BW	WW	YW	MCE	Milk	CW	YG	Marb	REA	\$API	\$TI
11.6	-0.1	73.4	119.2	6.7	17.4	40.8	-.23	0.34	1.02	\$136	\$80

In evaluating all species of livestock, we learn to start with the obvious. Yes, this heifer is off-colored. What's just as obvious is that she's pretty cool! If we put this heifer in a judging class, the color just becomes an ID or a way to describe her; it's not a reason to discount her.

LOT 50 | SSFC ELBINA C126

Double Black, Double Polled 3/4 Blood

from Slate Farms & Cattle Co., Vanleer, TN

Welsh Dew It Right 067T
PRS Blazin Hot W192
BF M234 BBF Mabelle K004

SSFC Elbina C126

LFI Dew It Again W269
Rhodes Elbina Z126
Rhodes Elbina 727



Calved Nov. 5, 2015
Tattoo: C126
ASA: Pending
Act Bwt: 84 lbs.
Adj 205: n/a
Starting bid: \$1,500
Final price: \$ _____

Projected EPDs - PRS Blazin Hot x Rhodes Elbina Z126

CE	BW	WW	YW	MCE	Milk	CW	YG	Marb	REA	\$API	\$TI
11.3	0.3	68.0	98.3	11.4	11.8	28.6	-.19	0.36	0.62	\$140	\$75

Lot 50 will be the Kenneth Ambrose Scholarship heifer from Slate Farms. Steve and I picked her out of a big group of weaned heifer calves, and she'll make a nice project heifer for that deserving young person.



Tux & Tails
Sire of Lot 51

This goggle-eyed baldy heifer calf by Tux & Tails is feminine and stylish, and she'll get better and better with time. The first "Tux" daughters in production are making nice mamas with balanced udders and small teats. This heifer's value will go up every day you own her.



W/C United
Sire of Lot 52

Does it affect her value?... Yes. In some scenarios it might. If you're not color-blind, though, and you know the good ones from the rest, you'll find this heifer and you'll appreciate a lot of things about her. She's been a favorite at WEF since she was a baby, and she just keeps getting better!



BULLS ARE OUR BREAD AND BUTTER.

REAL WORLD BULLS FOR REAL WORLD CATTLEMEN.

We rely heavily on repeat bull buyers, and we consider every cattleman a partner when he puts his confidence in a Martin Farms bull. We appreciate you trusting your next calf crop to MF genetics, and we work hard to ensure you're not surprised at calving time or disappointed at the market. We understand the dynamics of beef production within the context of the Southeastern United States. We know it's tempting to take a young bull home and turn him out with a small cow herd, but we've come to know that's not the best way to treat your next herd sire.

That doesn't mean you have to wait until you're ready to turn a bull out with your cows to shop for a good breeding age bull. Buy your next bull at the Open House and leave him with us until he's ready to go to work. We'll get him to that stage in his life for just the cost of feeding him, and we'll both be a little more proud of the bull your neighbor sees over the fence.

Our 2016 offering includes sixteen bulls--nine purebreds, six 3/4 bloods, and one SimAngus. As a group, they represent our program in terms of multi-trait selection with an emphasis on performance and the convenience traits of being polled and black with the exception of one red bull. The mean of the group compares better than breed average for birth weight and milk production and ranks in the top 15% for YW EPD, top 10% for ADG, and top 30% for Marb and REA. Most of these bulls will improve a lot of traits in most cow herds across the country.

You might notice the 2016 bull calves are priced a little higher than most of the older bulls. That's because this group of nine spring-born 2016 bulls is the top cut of their contemporary group, and they represent the past forty-something years of the work we've done as well as the time and money we've invested. This Class of 2016 bulls average 117 pounds of yearling weight EPD, ranking the average of those nine bulls in the top 5% among all purebred sires while still maintaining a balance of calving ease, maternal quality, and carcass potential well above breed average.

If you have questions about EPDs, performance ratios, any of the cow families or color genetics, please ask us! We'll share any information we have which is also visible to anyone logged in to the ASA website. We believe today's EPDs to be the best genetic predictions we have of a bull's potential contribution to your breeding program, so keep that in mind when comparing bulls from different contemporary groups. Every bull is guaranteed according to ASA guidelines, and we stand behind them one hundred percent.

Martin Farms retains a 25% interest on all revenue generated from semen sales which is only a consideration if your bull is ever collected and semen is sold. You own the bull outright, including 100% of salvage value, and the buyer assumes responsibility for all costs associated with collection and promotion should you decide to collect your bull.



Fifteen of the sixteen bulls in this offering qualify for TAEP cost share. They are indicated in the catalog by the new TAEP logo. Some bulls might fit your particular breeding scenario better than others, but know these bulls are bred to be multi-purpose breeding bulls, and we're more than happy to help you identify the bull that best fits your needs or steer you away from a bull we think doesn't work for your program. All the bulls will have an EID tag, and we will make every effort to accommodate any buyer who is approved for this important cost share program. Remember, if you plan to apply for cost share through TAEP in 2016-17 (October 1 - November 1), receipts dated prior to October 1, 2016 are not eligible. If you plan to apply for this program this fall and would like to purchase a bull in this sale, you will be bidding on the option to purchase the bull instead of purchasing the bull on sale day. If you are the successful bidder, that bull will be reserved for you, and settlement can be made after October 1. Please feel free to visit with us if you have questions or need any clarification regarding cost share options.

You don't have to drive hundreds of miles to find a good herd bull.

Lot 53 | MF COUNTY LINE

Homozygous Black & Homozygous Polled 3/4 Blood

Ellingson Legacy M229
3C Southbound W9350
3C Ms RIIS T7157 B

MF County Line

TNT Dual Focus T249
Elbina Y66
Rhodes Elbina X66

Calved Feb. 3, 2015

Tattoo: CY66

ASA: 2953130

Adj Bwt: 78 Ratio: 107

Adj 205: 620 Ratio: 835

Adj. 365: 1202 Ratio: NC

Starting bid: \$4,000

Final price: \$ _____



3C Southbound
Sire of Lot 53

Fall 2016 GE-EPDs

	CE	BW	WW	YW	ADG	MCE	Milk	MWW	DOC	CW	YG	Marb	BF	REA	\$API	\$TI
EPD	13.4	0.8	72.1	113.4	0.26	9.0	17.5	53.5	12.7	38.7	-0.26	.48	-.032	0.90	\$149	\$82
RANK	30%	55%	15%	15%	15%	35%	80%	40%	25%	15%	50%	30%	55%	15%	15%	10%

A lot of cattlemen have a perception that the farther away from home they travel to look at bulls, the better the bulls are they have the option to buy. That might be true, depending on where you live. But if you're not terribly far from us, why not stop by and check out this offering before you set out to drive hundreds of miles and end up paying more.

MF County Line might be one of the most complete Southbound sons we've ever had to offer. Phenotypically, he balances the extra muscle and performance of the Southbounds with the softness and sensibility of his ideal Dual Focus mother. He's a total package breeding bull with genetic flexibility to fit a lot of different scenarios. Your next herd bull might be as close as the county line.



Lot 53, MF County Line



The first real proof by Alter Ego comes from a good set of cows that belong to our good friend Thomas "June" Smith. June is a discerning cattleman, and he's particular about the bull we turn out on his cow herd that he's spent a long time building. Our relationship with June is based on years and years of doing business with him, but it's his commitment to always raising a



MF Cover Crop is another homozygous black Alter Ego son that will add frame, pounds and performance to your next calf crop. He comes out of a solid set of cows that are bred and selected based on their performance in the real world.



MF Alter Ego
Sire of Lots 54 & 55

LOT 54 | MF CYCLONE

Homozygous Black, Double Polled Purebred

MCM Top Grade 018X
MF Alter Ego
CircleT Antoinett Legacy

MF Cyclone

Nichols Manifest T79
MF Exactly
(Triple C) Sweet Pea

Calved Sept. 4, 2015

Tattoo: C63X

ASA: 3049915

Adj. Bwt: 83 Ratio: 101

Adj. 205: 696 Ratio: 94

Starting bid: \$2,200

Final price: \$ _____

Fall 2016 EPDs

CE	BW	WW	YW	MCE	Milk	CW	YG	Marb	REA	\$API	\$TI
8.4	0.6	57.2	94.9	8.5	22.6	27.9	-31	0.26	0.82	\$130	\$71

better set of calves than the ones he sold last year that makes him a good genetic partner. When this set of Alter Ego calves hit the ground, we thought they were special. They will make ideal commercial bulls that will increase pounds of calf per cow exposed, and they'll put females back into your herd that will make your neighbors take notice.

LOT 55 | MF COVER CROP

Homozygous Black, Double Polled Purebred

MCM Top Grade 018X
MF Alter Ego
CircleT Antoinett Legacy

MF Cover Crop

MF HB Beefer Dice N34
Lady June U9
Lady June R4

Calved Sept. 7, 2015

Tattoo: C13U

ASA: 3049922

Adj. Bwt: 80 Ratio: 104

Adj. 205: 729 Ratio: 98

Starting bid: \$2,200

Final price: \$ _____

Fall 2016 EPDs

CE	BW	WW	YW	MCE	Milk	CW	YG	Marb	REA	\$API	\$TI
8.8	0.2	58.9	93.0	8.6	22.4	25.9	-39	0.20	0.89	\$121	\$71

The Lot 55 bull stacks three generations of MF genetics all backed by real cow power. He's ideally designed to go on a good set of Angus based commercial cows, and he'll make your steers heavier and your females better.

LOT 56 | MF CHINOOK C22W

Homozygous Black, Double Polled Purebred

Nichols Manifest T79
MF Yosemite
LVL Lchmn Montana

MF Chinook C22W

LVL Black Ally
MF Whoopi
MF Lucky One M322

Calved Oct. 25, 2015

Tattoo: C22W

ASA: 3049940

Adj. Bwt: 76 Ratio: 99

Adj. 205: 737 Ratio: 104

Starting bid: \$2,200

Final price: \$ _____

Fall 2016 EPDs

CE	BW	WW	YW	MCE	Milk	CW	YG	Marb	REA	\$API	\$TI
10.5	0.8	61.1	93.4	12.5	26.2	26.7	-22	0.28	0.64	\$136	\$72

MF Chinook is another solid commercial bull prospect packed with pounds of muscle and performance. His dam comes from a proven genetic line of high-performing cattle with commercial appeal. They are the no-nonsense kind, and they get the job done year after year.

Lot 57 | MF/WTR CHEDDAR

Double Polled Red 3/4 Blood

SS Upscale X25
PMS Excursion 841A
Zeis Miss Drive N423
MF/WTR Cheddar
Shady's Beck/Julian 7177
Red P41Z
P41

Calved Sept. 17, 2015
Tattoo: C41Z
ASA: 3049918
Adj Bwt: 86 Ratio: 93
Adj 205: 578 Ratio: 98
Starting bid: \$2,000
Final price: \$_____

Fall 2016 EPDs

CE	BW	WW	YW	MCE	Milk	CW	YG	Marb	REA	\$API	\$TI
7.2	1.8	57.3	78.1	5.0	21.1	18.8	-.33	0.15	0.61	\$103	\$62

We have one co-op herd of red cattle, and we have to admit we still like the reds! J. I. and Joanie Allison have been friends and customers almost as long as we've been selling seedstock Simmental cattle. They bought their first females in 1976, and J. I. stood firm when the pressure came to make 'em all black hided.



This red prospect has been a standout since he hit the ground as a baby. His mama is a nice, solid red Simmental/Red Angus that originated in Ronnie Osteen's good herd of performance-oriented cattle, and he looks more like his deep, moderate, thick made sire every day. A good red bull is hard to find anymore... If you're in the market, you just found one.

Lot 58 | MF/WTR COACH

Heterozygous Black, Polled/Scurred SimAngus

Connealy Mentor 7374
TT Mentor 6595 059
TT Miss Rita W068
MF/WTR Coach
Bar 5 PSA Essential 413U
ICC Gadsen
Ms Fraulein P265E

Calved Oct. 26 2015
Tattoo: C48
ASA: 3049931
Adj Bwt: 79 Ratio: 101
Adj 205: 678 Ratio: 115
Starting bid: \$2,000
Final price: \$_____

Fall 2016 EPDs

CE	BW	WW	YW	MCE	Milk	CW	YG	Marb	REA	\$API	\$TI
7.5	2.1	65.2	103.2	6.3	31.3	34.7	-.06	0.22	0.55	\$104	\$67

"Coach" is a cool baldy bull that has been fun to watch grow and develop because he gets better and better every day. Genetically, he's an interesting hybrid blend and a good reminder of every reason this thing called SimAngus ever happened.



This calf's sire is an ideal commercial Angus bull, and his mother is a fullblood Fleckvieh Simmental, and just like those first calves we remember back in the early days, the result of that mating is almost magical. If your plans don't require a homozygous black bull, I'd jump on this one!

Lot 59 | MF CHILI DOG

Homozygous Black, Double Polled 3/4 Blood

Long's Shear Pleasure
Gibbs 1084Y Tux & Tails
Gibbs 7241T Sm Bet L138
MF Chili Dog
ES Power Pax Hy TM68
Gibbs 1036Y Jan 7171T
Gibbs 7171T Jan M05

Calved Nov. 13, 2015
Tattoo: C36Y
ASA: 3049961
Adj Bwt: 75 Ratio: 100
Adj 205: 677 Ratio: 96
Starting bid: \$2,000
Final price: \$_____

Fall 2016 EPDs

CE	BW	WW	YW	MCE	Milk	CW	YG	Marb	REA	\$API	\$TI
9.8	2.1	59.9	99.8	5.0	22.9	33.0	-.46	0.14	1.18	\$110	\$66

The Tux & Tails sons and daughters alike have garnered a great deal of acceptance from both commercial and seedstock producers. Six sons averaged \$5,667 at the New Day Bull Sale in Missouri back in April where they were appreciated for their uniformity and solid performance.



"Chili Dog" is out of a cool made, big-ribbed female Chris picked out of a Gibbs sale as an open yearling heifer. Like both his sire and his dam, this calf is designed with the commercial cow man in mind. He should add pounds without extra frame or excessive birth weight.

Avoid all the road blocks.

Lot 60 | MF DETOUR

Homozygous Black, Homozygous Polled Purebred

W/C United 956Y
Mr NLC Avenue 3088A
Ms NLC Olie T7813 B

MF Detour

Mr NLC Upgrade U8676
CVLS Spring Velvet 064B
PRS Spring Velvet X126

Calved Jan. 5, 2016

Tattoo: D64B

ASA: 3099235

Adj Bwt: 96 Ratio: 81

Adj 205: 753 Ratio: 111

Starting bid: \$4,000

Final price: \$ _____



Grandam of Lot 60
PRS Spring Velvet X126

Fall 2016 EPDs

	CE	BW	WW	YW	ADG	MCE	Mik	MWW	DOC	CW	YG	Marb	BF	REA	\$API	\$TI
EPD	7.2	3.7	88.5	140.9	0.33	5.0	16.6	60.8	11.1	59.1	-0.29	0.24	-0.064	1.01	\$118	\$84
RANK	75%	85%	1%	1%	1%	95%	85%	10%	45%	1%	70%	30%	35%	15%	65%	2%

Sometimes it's hard to know exactly what to think about one that's completely different. We sampled the Avenue bull expecting him to boost performance EPDs and increase stoutness without adding excessive frame, so this "detour" isn't necessarily a big surprise!

We found this calf's dam as an open heifer at Kenco's Family Matters Sale, and we fell in love with her extra depth and rib shape. This is just her first calf, and we can't say we expected anything less out of her, but she has met our expectations and set the bar even higher for herself. She has definite donor potential in our program, and we don't think it's too soon to get excited about this guy and the cow family behind him.



Sire of Lot 60
Mr NLC Avenue



Lot 60, MF Detour

A mountain of genetic merit.



MF Vanilla Bean
Maternal sister to Lot 61

LOT 61 | MF DENALI

Homozygous Black & Homozygous Polled 3/4 Blood

MCC Daylite 0005
CCR Frontier 0053Z
CCR Ms 4013 Dura 0054X

MF Denali

MSR Logo 3083N
MF Telluride
MF Black Velvet

Calved Jan. 9, 2016

Tattoo: D9T

ASA: 3099230

Adj Bwt: 83 Ratio: 97

Adj 205: 690 Ratio: 102

Starting bid: \$4,000

Final price: \$ _____

Fall 2016 EPDs

	CE	BW	WW	YW	ADG	MCE	Milk	MWW	DOC	CW	YG	Marb	BF	REA	\$API	\$TI
EPD	10.4	2.2	62.8	86.9	0.15	10.9	18.9	50.3	6.4	24.5	-0.27	.36	-.035	0.77	\$133	\$70
RANK	55%	80%	40%	65%	80%	15%	70%	60%	99%	55%	45%	50%	55%	35%	35%	45%

We talk a lot about the “Virginia” cow family and the females like MF Vanilla Bean and MF Pink that have become cornerstones in our breeding program. When we talk about cow family, it’s easy to get wrapped up on the females because after all, we’re talking about females! But in case it makes more sense to you to invest your money in a herd bull prospect that’s capable of stamping out females like that by the truck load, here’s one you might want to think about.

MF Denali is the latest edition straight from the dam of Vanilla Bean; he’s a maternal half brother to possibly the best female we’ve raised here in our forty-plus years. And he’s sired by CCR Frontier who was the talked-about sire group from the 2015 Cow Camp sale. His numbers are more moderate than some of the bulls in this offering, but the real cowboys wouldn’t disregard him based on that. This calf might have as much genetic potential as anything we sell this year.



Lot 61, MF Denali



LOT 62 | MF DIRECTION

Homozygous Black & Polled 3/4 Blood

Nichols Manifest T79
MF Straightforward Y9
MF Pink

Calved Jan. 8, 2016

Tattoo: D89Y

ASA: 3099244

MF Direction

GW Lucky Man 644N
Rhodes Blackcap Y89
Rhodes Blackcap 659

Adj. Bwt: 79 Ratio: 102

Adj. 205: 755 Ratio: 112

Starting bid: \$3,500

Final price: \$ _____

Fall 2016 EPDs

CE	BW	WW	YW	MCE	Milk	CW	YG	Marb	REA	\$API	\$TI
11.6	0.7	76.0	123.3	12.7	20.6	44.4	-.11	0.33	0.84	\$143	\$80

MF Direction will probably be the first bull calf you pick out when you walk into the bull pen. He recorded our #1 weaning weight in this group, and he puts together a solid EPD proof, all no surprise when we study his pedigree and the cows behind him. His sire, Straightforward, was Pink's first calf and the one that got her noticed in our program early on as a producer of

fast growth. We stacked that performance and cow family on another great female, Y89, who happens to be the dam of MF Bona Fide and also raised one of our top heifer calf lots last year. That heifer is not back in the sale this year, but you'll probably see her first baby in next year's sale catalog. This is a young cow family that is rising in the ranks!



LOT 63 | MF DIALOG

Homozygous Black & Polled 3/4 Blood

Nichols Manifest T79
MF Straightforward Y9
MF Pink

Calved Jan. 6, 2016

Tattoo: D71Z

ASA: 3099226

MF Dialog

Coleman Regis 904
NB Regina Z71
NB Dreamboat Anne 5U

Adj. Bwt: 97 Ratio: 80

Adj. 205: 670 Ratio: 99

Starting bid: \$3,000

Final price: \$ _____

Fall 2016 EPDs

CE	BW	WW	YW	MCE	Milk	CW	YG	Marb	REA	\$API	\$TI
11.4	1.9	71.9	115.3	12.9	17.9	41.5	-.12	0.33	0.83	\$139	\$76

MF Dialog is a homozygous black baldy prospect that stacks two of the top females in our program, the proven donor "Pink" on the top side and his beautiful dam, Regina, our \$8,500 pick and a crowd favorite at the 2013 Tennessee Fall Showcase Sale.

A heifer backed by those two cows would have been nice, but this thick-ended baldy should be an ideal commercial bull to produce pounds of feeder steers and ideally designed females to put back into the herd. If you're looking for a stouter made baldy bull backed by cow power, look him over closely.



LOT 64 | MF DRIVE TRAIN

Homozygous Black & Polled Purebred

W/C United 956Y
Mr NLC Avenue 3088A
Ms NLC Olie T7813 B

Calved Jan. 6, 2016

Tattoo: D66Y

ASA: 3099240

MF Drive Train

Triple C Bettis S72J
MF Yoo Hoo
MSR 3266N of 8080H Leg

Adj. Bwt: 80 Ratio: 101

Adj. 205: 720 Ratio: 106

Starting bid: \$3,000

Final price: \$ _____

Fall 2016 EPDs

CE	BW	WW	YW	MCE	Milk	CW	YG	Marb	REA	\$API	\$TI
10.8	0.8	70.0	112.5	11.9	24.9	38.2	-.31	0.09	0.95	\$130	\$74

The 3266N cow from the Moser program was a favorite in our herd for as long as she was here and has been well-represented at every sale since our first one in 2006! She retired last year, but before she did, she left us Yoo Hoo. This bull's young dam has been a complete rock star and may be earning

her way into the donor pen. She produced MF Buttermilk selected by Hayden Campbell at the 2014 Open House as well as MF Cornerstone, the featured bull calf the went to Adam Wheatley in last year's sale. This calf is a solid herd sire prospect that could fit into almost any breeding scenario.

Lot 65 | MF DIRT ROAD

Homozygous Black & Polled Purebred

W/C United 956Y
Mr NLC Avenue 3088A
Ms NLC Olie T7813 B

MF Dirt Road

TNT Tanker U263
MF Zeta
MF Polly Pocket

Calved Jan. 13, 2016

Tattoo: D9Z

ASA: 3099221

Adj Bwt: 75 Ratio: 107

Adj 205: 682 Ratio: 101

Starting bid: \$3,000

Final price: \$ _____

Fall 2016 EPDs

CE	BW	WW	YW	MCE	Milk	CW	YG	Marb	REA	\$API	\$TI
9.1	0.2	66.9	110.3	13.6	24.8	36.2	-.34	0.18	0.97	\$132	\$75

MF Dirt Road is another Avenue son with extra muscle packed into a sensible frame. His dam is a maternal sister to the "Pink" donor cow, and she's emerging as a real bull mama. Her first calf was MF Brass Tacks which sold to Henke Family Farm of Missouri in the 2014 sale.



Lot 65 presents a logical phenotype backed by a top pedigree and a no-holes EPD profile. He's an example of what you get when you make progress in multiple traits and avoid the extremes. If you like to keep things down the middle of the (dirt) road, check this one out!

Lot 66 | MF DOUBLE TAKE

Homozygous Black & Polled Purebred

S D S Graduate 006X
CCR Wide Range 9005A
CCR Ms Apple 9332W

MF Double Take

Nichols Legacy G151
LDJA Miss Legacy
SPF Miss Alliance T730

Calved Jan. 4, 2016

Tattoo: D70B

ASA: 3099228

Adj Bwt: 76 Ratio: 106

Adj 205: 653 Ratio: 96

Starting bid: \$3,000

Final price: \$ _____

Fall 2016 EPDs

CE	BW	WW	YW	MCE	Milk	CW	YG	Marb	REA	\$API	\$TI
6.9	-0.4	74.7	116.5	9.1	24.4	38.6	-.33	0.13	1.07	\$121	\$78

We've been impressed with our Legacy daughters over the years, and when Chris found this bull's dam as an open heifer in a sale catalog, we drove down to bring her home. She has not disappointed us with this one, and now the bar has been set. We expect great things from her!



MF Double Take may not be the first calf to catch your eye, but study him hard and then tell us what you don't like about him. This calf may be as complete as any bull in the group in terms of moderation and design coupled with a balanced and sensible set of numbers.

Lot 67 | MF DOLLAR SIGN

Homozygous Black & Polled Purebred

S D S Graduate 006X
CCR Wide Range 9005A
CCR Ms Apple 9332W

MF Dollar Sign

Triple C El Poderoso Rey
MF Pink
MF Polly Pocket

Calved Jan. 3, 2016

Tattoo: D40X

ASA: 3099234

Act Bwt: 70 Ratio: ET

Adj 205: 717 Ratio: ET

Starting bid: \$3,000

Final price: \$ _____

Fall 2016 EPDs

CE	BW	WW	YW	MCE	Milk	CW	YG	Marb	REA	\$API	\$TI
5.8	0.3	69.5	115.2	13.8	24.9	39.3	-.33	0.14	1.25	\$122	\$74

The Wide Range calves we've had are what we call "meat & potatoes" cattle that are hard to fault in terms of things that really matter. Ours have performed with the top end of the calf crop, and they are thick made with plenty of rib and volume.



MF Dollar Sign is backed by the donor, MF Pink, and should make a perfect herd bull prospect for any commercial program that sells their steers by the pound and wants to keep the right kind of replacements. He's named for the fact that he will add dollars to your bottom line.



THE KENNETH AMBROSE MEMORIAL HEIFER SCHOLARSHIP ANNUAL SEMEN AUCTION

Opens Monday, Sept. 19 | 2PM EST
Closes Tuesday, Sept. 20 | 8PM EST

All proceeds go toward a voucher program
to help scholarship finalists purchase a heifer
at Martin Farms' Open House at the Farm



Lot 1 | \$200 semen certificate
Donated by Select Sires / Robert Dragland



Lot 2 | 10 straws of CCR Boulder 1339A
Donated by ABS Global / Stuart James



Lot 3 | 10 straws of CCR Frontier 0053Z
Donated by Barry Ellis Bovine Services



Lot 4 | 10 straws of MF Alter Ego
Donated by Martin Farms



Lot 5 | 10 straws of 3C Southbound W9350
Donated by Martin Farms



Lot 6 | 10 straws of MF Straightforward Y9
Donated by Jared Wareham / Cattleman's Choice



Lot 7 | 10 straws of Circle Upgrade A348
Donated by Jared Wareham / Cattleman's Choice



Lot 8 | 10 or 20 straws of Mr WEF Hot-Pursuit
Donated by Water's Edge Farm



Lot 9 | 3 straws of FBF1 Combustible
Donated by Water's Edge Farm & Laurel Hill Cattle Co.



Lot 10 | 2 straws of Mr NLC Upgrade U8676
Donated by Martin Farms



Lot 11 | 2 straws of Yardley High Regard
Donated by Laurel Hill Cattle Co.



Lot 12 | 4 straws of JBS Big Casino
Donated by Peaceful Valley Farm

SPECIAL THANKS TO



FOR HOSTING THE 2016
HEIFER SCHOLARSHIP SEMEN AUCTION
PLEASE LOG ON TO DPOneSales.com
TO REGISTER TO BID & SUPPORT
THIS YEAR'S SCHOLARSHIP AUCTION

We are indebted to Holli and Drew Hatmaker and DPSalesOnline for hosting an online auctions this year to help promote our scholarship program and to provide opportunities for our scholarship alternates to purchase a heifer of their own. For more information about this year's semen auction, log in to DPOneSales.com or visit us online at MartinFarmsBeef.com and click on the Scholarship tab. You can also call or text Chris at 931-580-6821 with any questions or to place a bid on any semen lot. All proceeds go directly to alternates of the Kenneth Ambrose Memorial Heifer Scholarship to help youth purchase cattle at the Open House at the Farm sale September 24th. Special Thanks to all the donors for your support and for making this auction possible!



Lot 13 | 1 straw of GCC Whizard 125W
Donated by Laurel Hill Cattle Co.



Lot 14 | 6 straws of Triple C Invasion R47K
Donated by Martin Farms

Notes



**TENNESSEE AGRICULTURAL
ENHANCEMENT PROGRAM
2016-2017 EPD Requirements by Breed**

To qualify, a bull must meet or exceed EPD requirements in each EPD category for at least one of three bull types. The three bull types are Balanced, High Growth or Calving Ease bulls. Each bull type has different EPD requirements. The three EPD categories are Calving Ease, Growth and Maternal. Balanced and Heifer bulls must meet requirements in all three EPD categories. Terminal bulls must meet the requirements for two EPD categories and do not have a maternal requirement. Maximum cost share for bulls with standard EPDs is \$1,200. Maximum cost share for bulls with genomic-enhanced EPDs is \$1,600.

BALANCED BULLS
1st bull type option

Must meet or exceed EPD requirements for: Calving Ease AND Growth AND Maternal

CALVING EASE		GROWTH		MATERNAL	
Minimum	Maximum	Minimum	Minimum	Minimum	Maximum
CE	or Brth	Wean	or Year	Milk	Milk
8	2.5	58	78	13	32
9	1.4	55	78	15	32

- SIMMENTAL**
- SIM-HYBRID**

HIGH GROWTH BULLS
2nd bull type option

Must meet or exceed EPD requirements for: Calving Ease AND Growth

CALVING EASE		GROWTH		MATERNAL	
Minimum	Maximum	Minimum	Minimum	Minimum	Maximum
CE	or Brth	Wean	or Year	Milk	Milk
4	4.3	66	97	n/a	n/a
6	3.3	64	100	n/a	n/a

- SIMMENTAL**
- SIM-HYBRID**

CALVING EASE BULLS
3rd bull type option

Must meet or exceed EPD requirements for: Calving Ease AND Growth AND Maternal

CALVING EASE		GROWTH		MATERNAL	
Minimum	Maximum	Minimum	Minimum	Minimum	Maximum
CE (Acc)	or Brth (Acc)	Wean	or Year	Milk	Milk
13 (-.15)	0.4 (-.15)	54	75	13	32
15 (-.15)	-0.4 (-.15)	50	75	15	32

- SIMMENTAL**
- SIM-HYBRID**

Adam Moss

Martin Farms

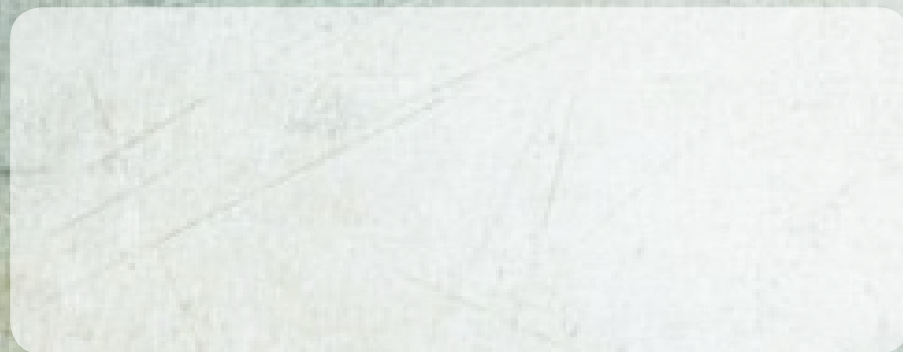
Homozygous Black & Polled Simmental & SimAngus

Simmental genetics since 1971

9387 S Lick Creek Rd | Lyles, TN 37098

TIME SENSITIVE

PLEASE DO NOT DELAY



OPEN HOUSE AT THE FARM

SATURDAY, SEPTEMBER 24, 2016

At the farm in Lyles, Tennessee

Less than one hour west of Nashville

